

L'OSSIFICATION

- **Ossification de membrane (endoconjonctive)**
- **Ossification endochondrale**

Histogénèse du tissu osseux

Différenciation des cellules

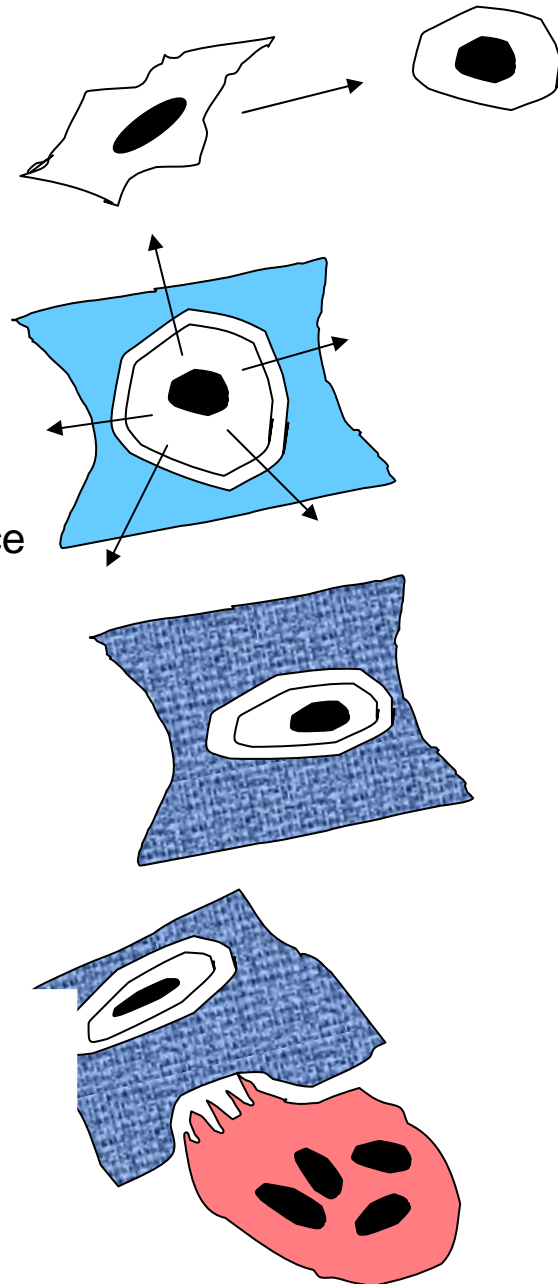
① Mésenchymateuse en ostéoblaste

Sécrétion par les ostéoblastes de la matrice organique du le tissu osseux (fibres collagènes+ Substance fondamentale)

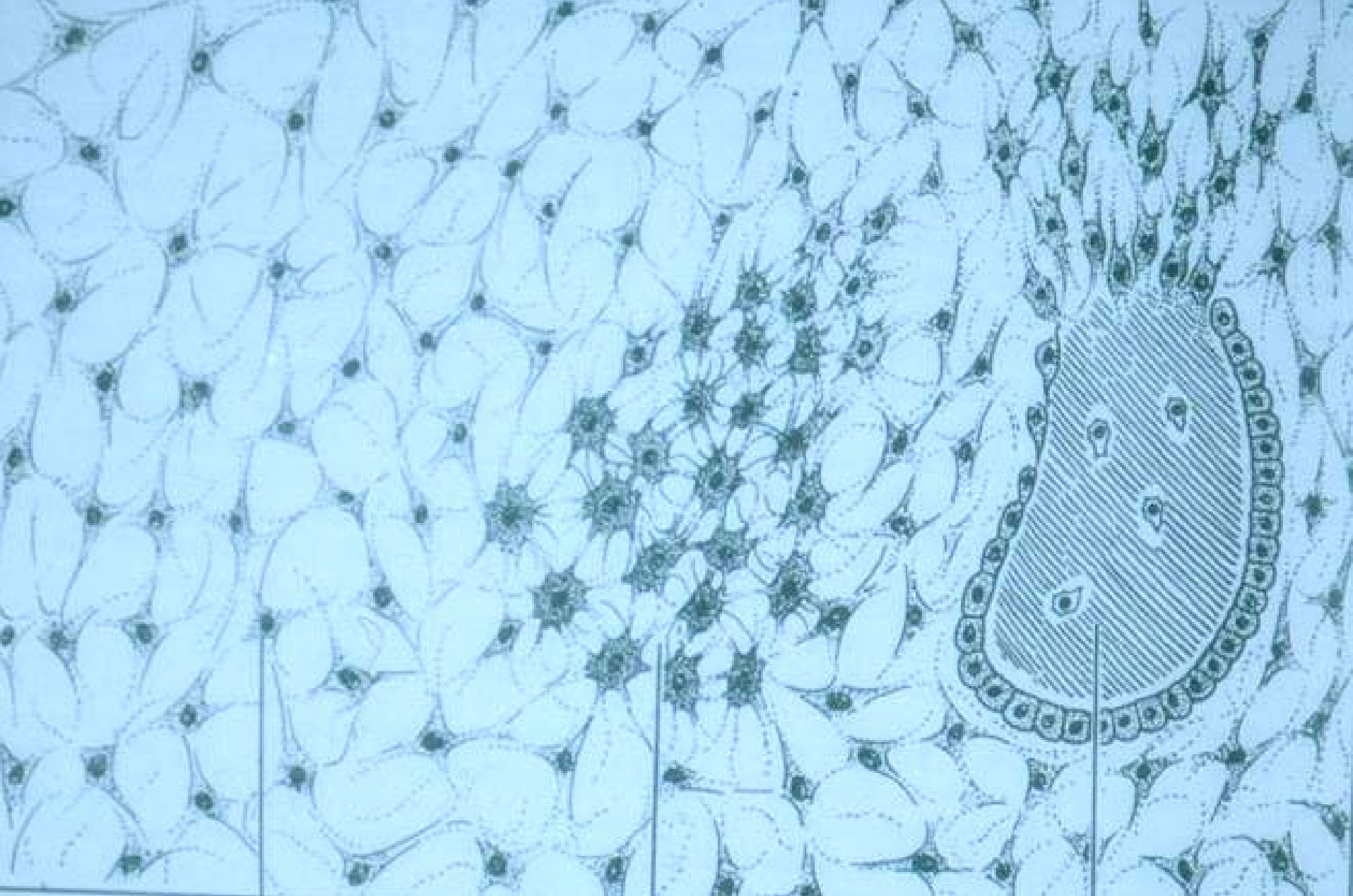
② Lorsqu'il entièrement entouré par cette matrice L'ostoblaste prend le nom d'ostéocyte)

③ Minéralisation de la matrice organique (dépôt de cristaux d'apatite)

④ Apparition des ostéoclastes



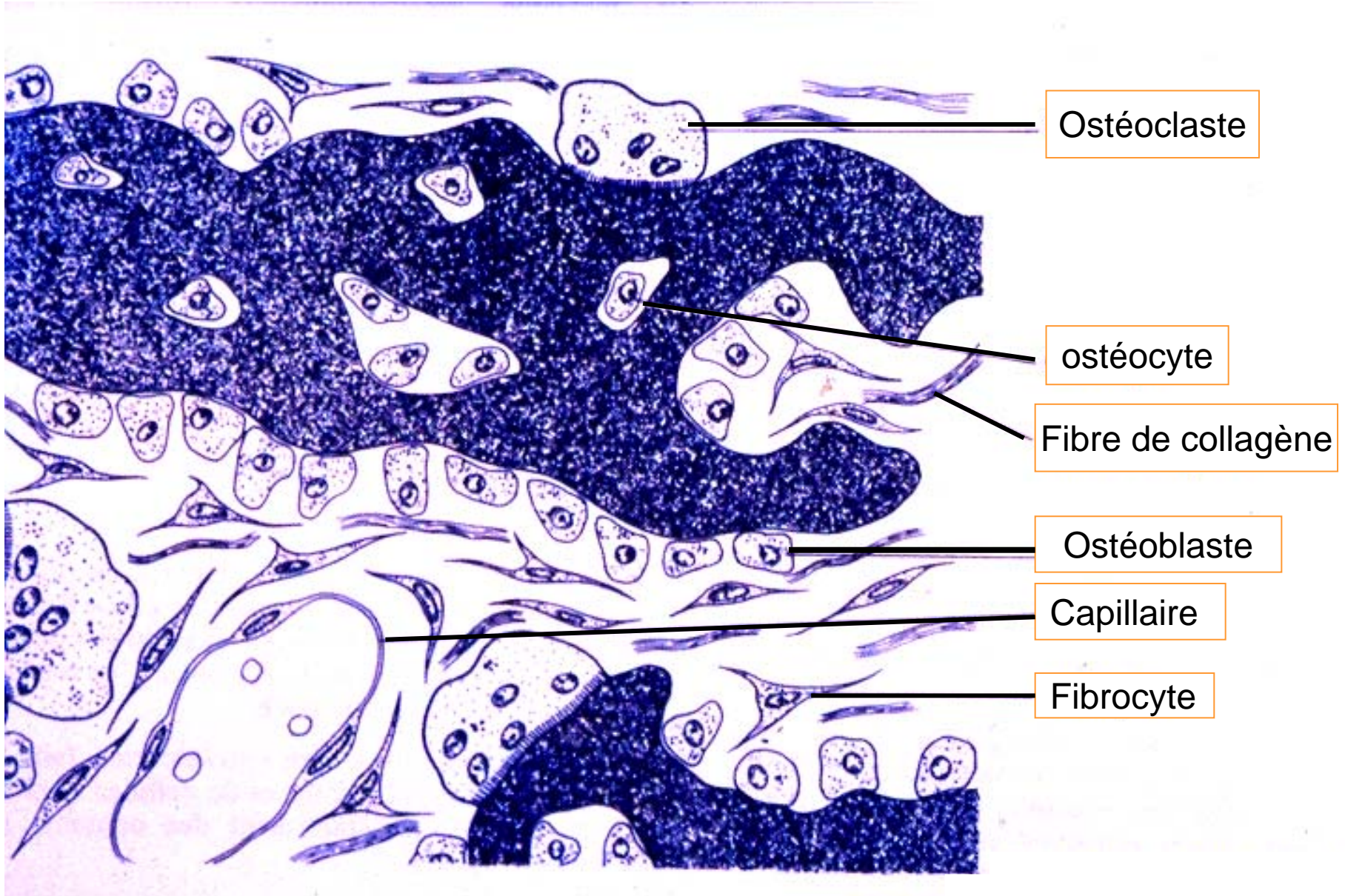
Ossification de membrane

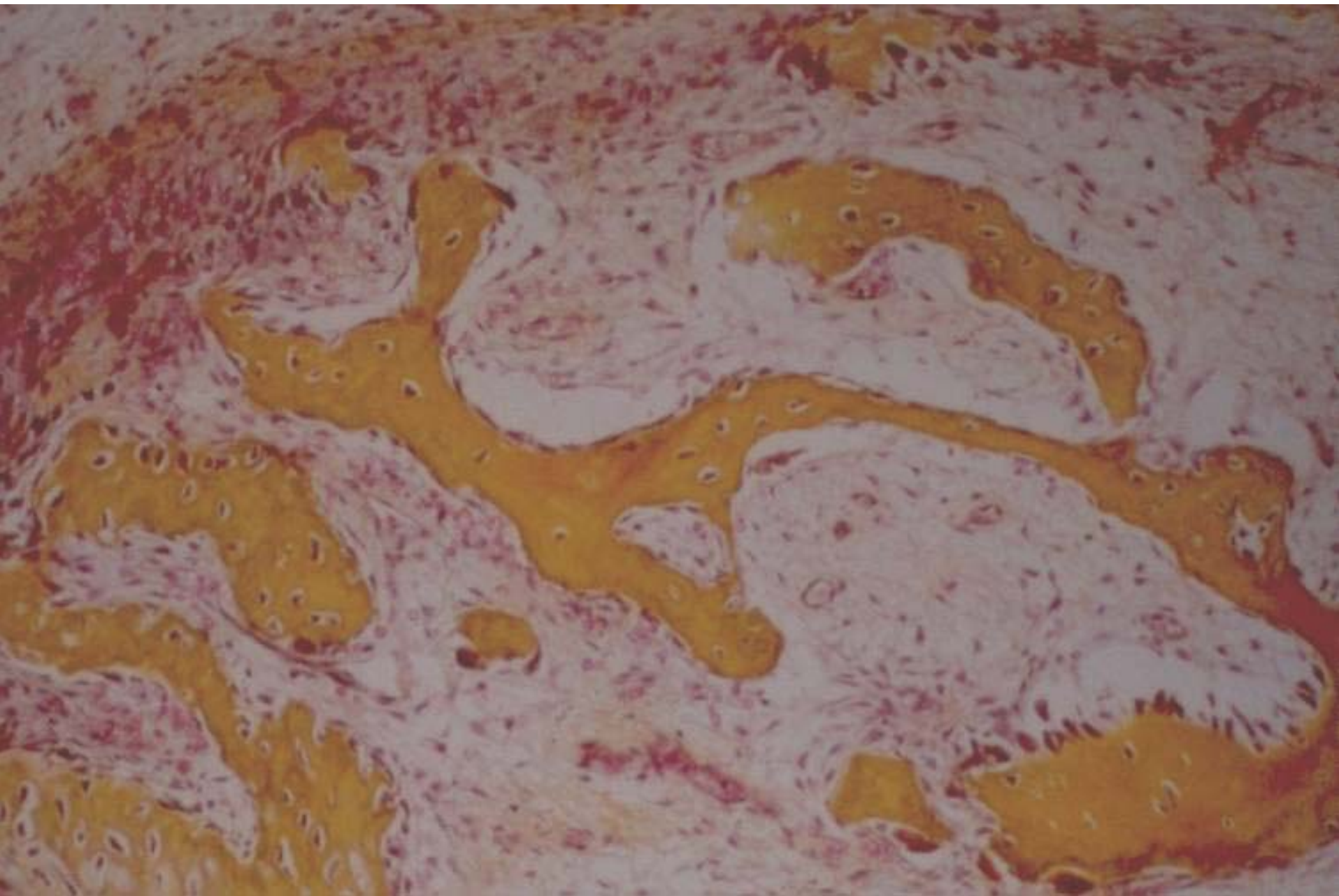


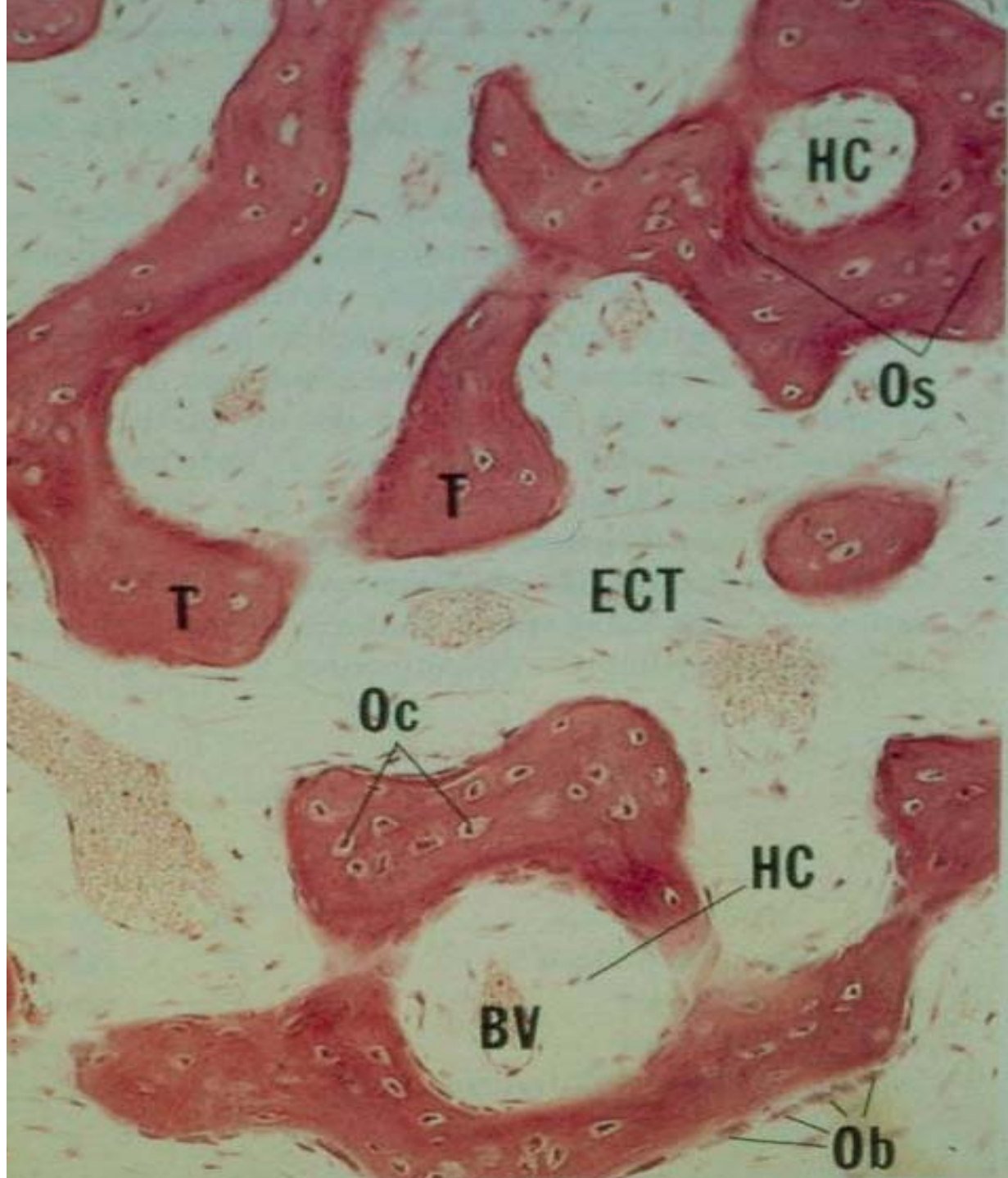
Mésenchyme

blastème osseux

os primaire

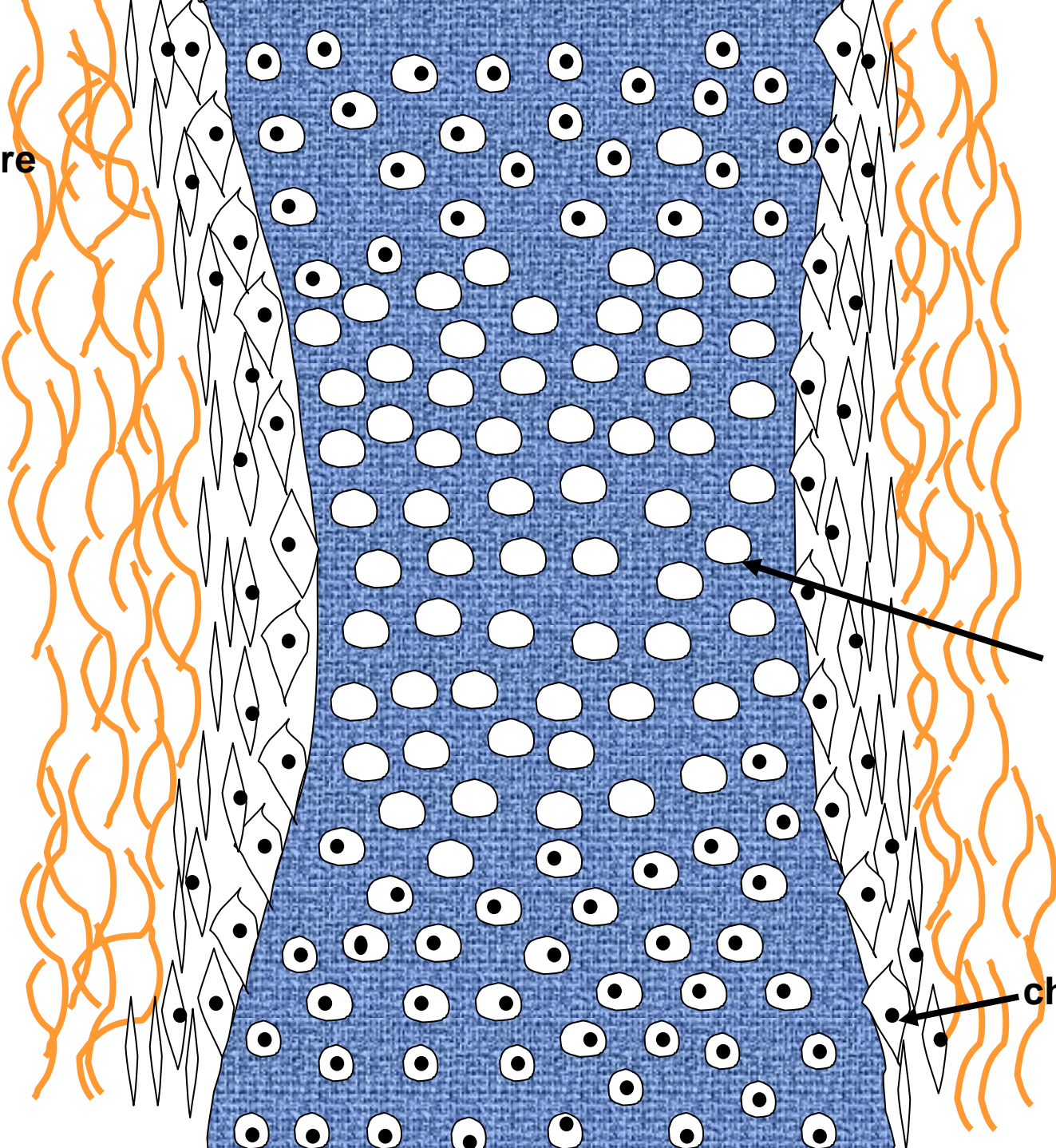






Ossification endochondrale

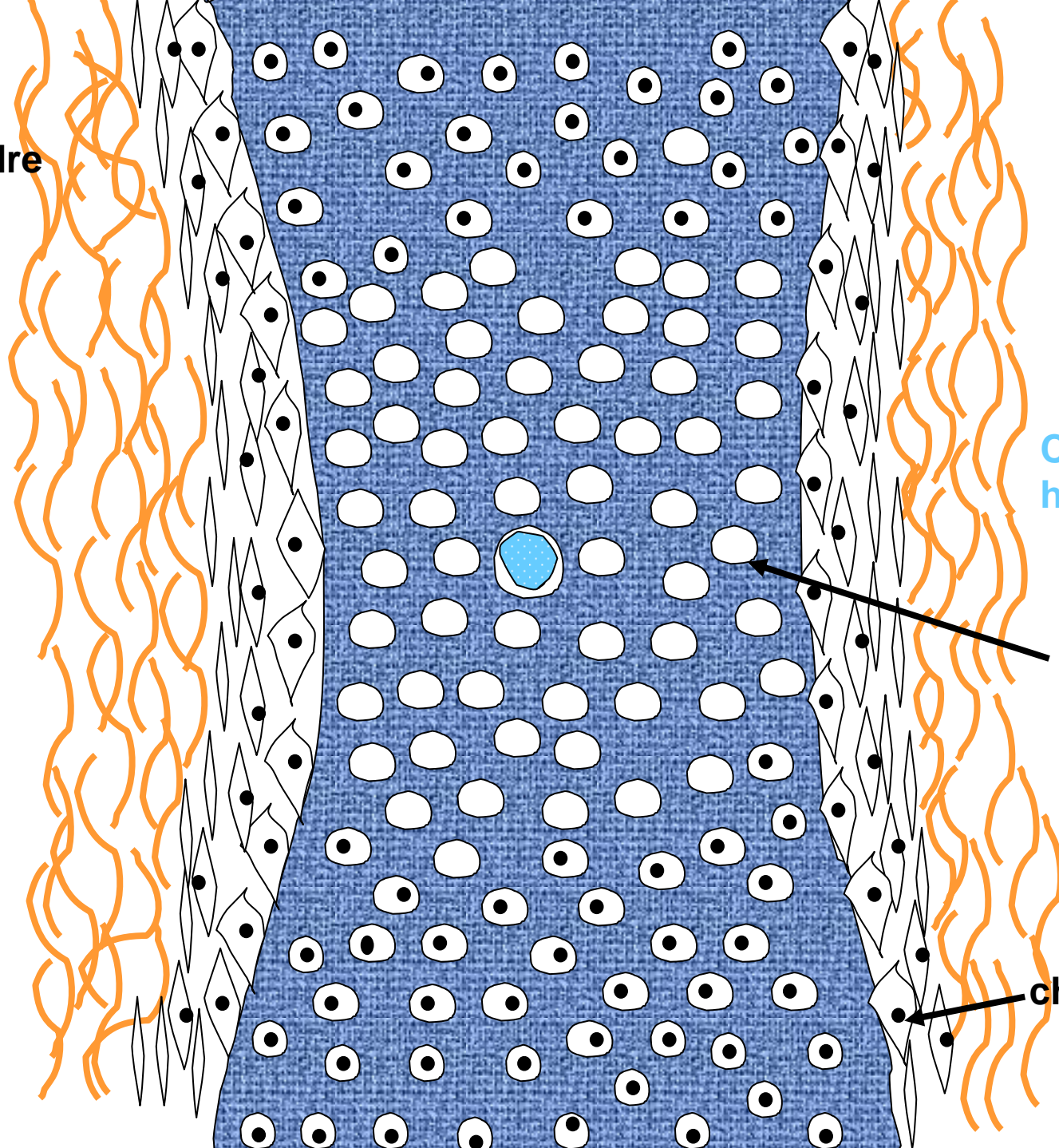
périchondre



chondrocyte

chondroblaste

périchondre

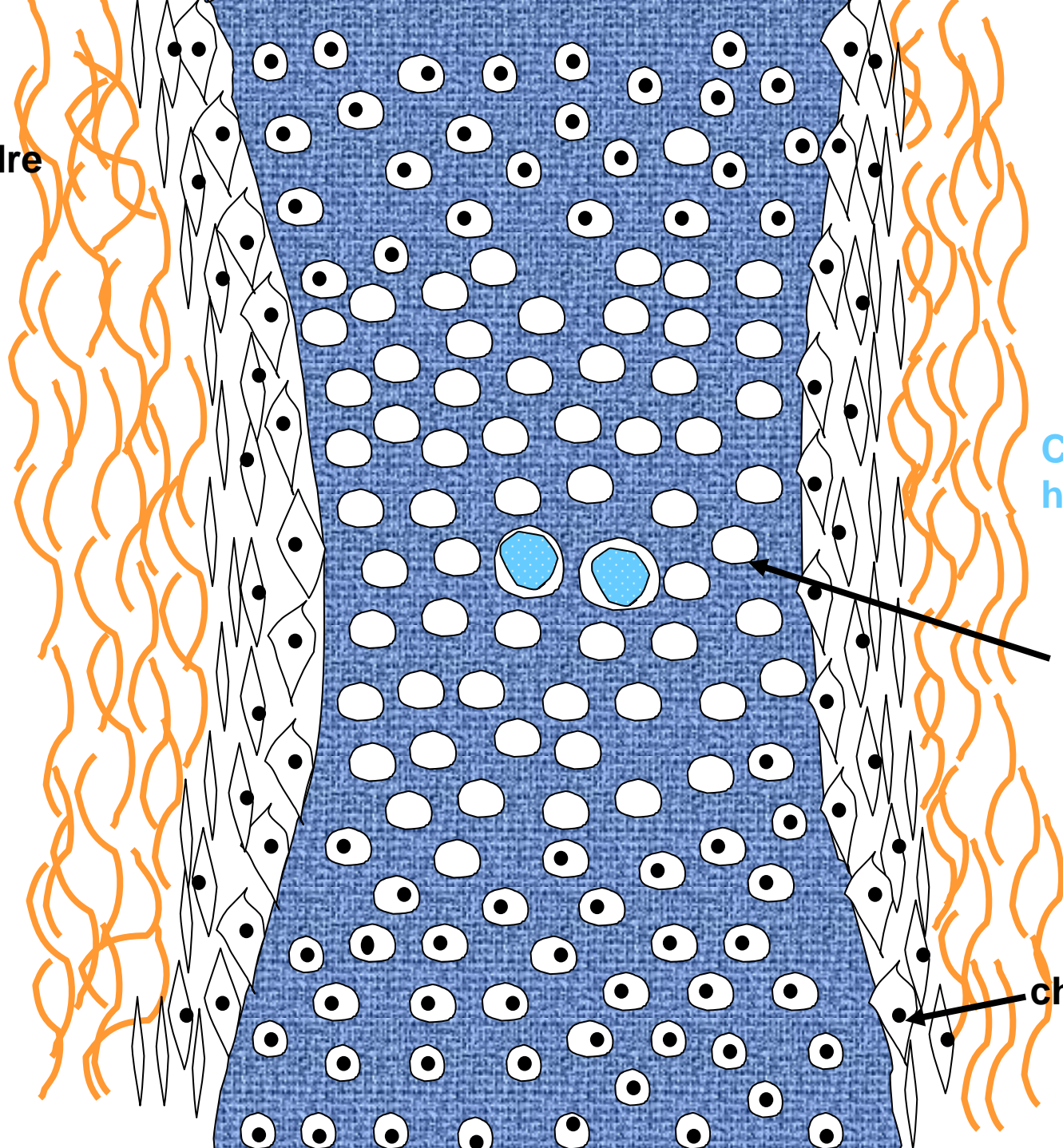


Chondrocyte hypertrophié

chondrocyte

chondroblaste

périchondre

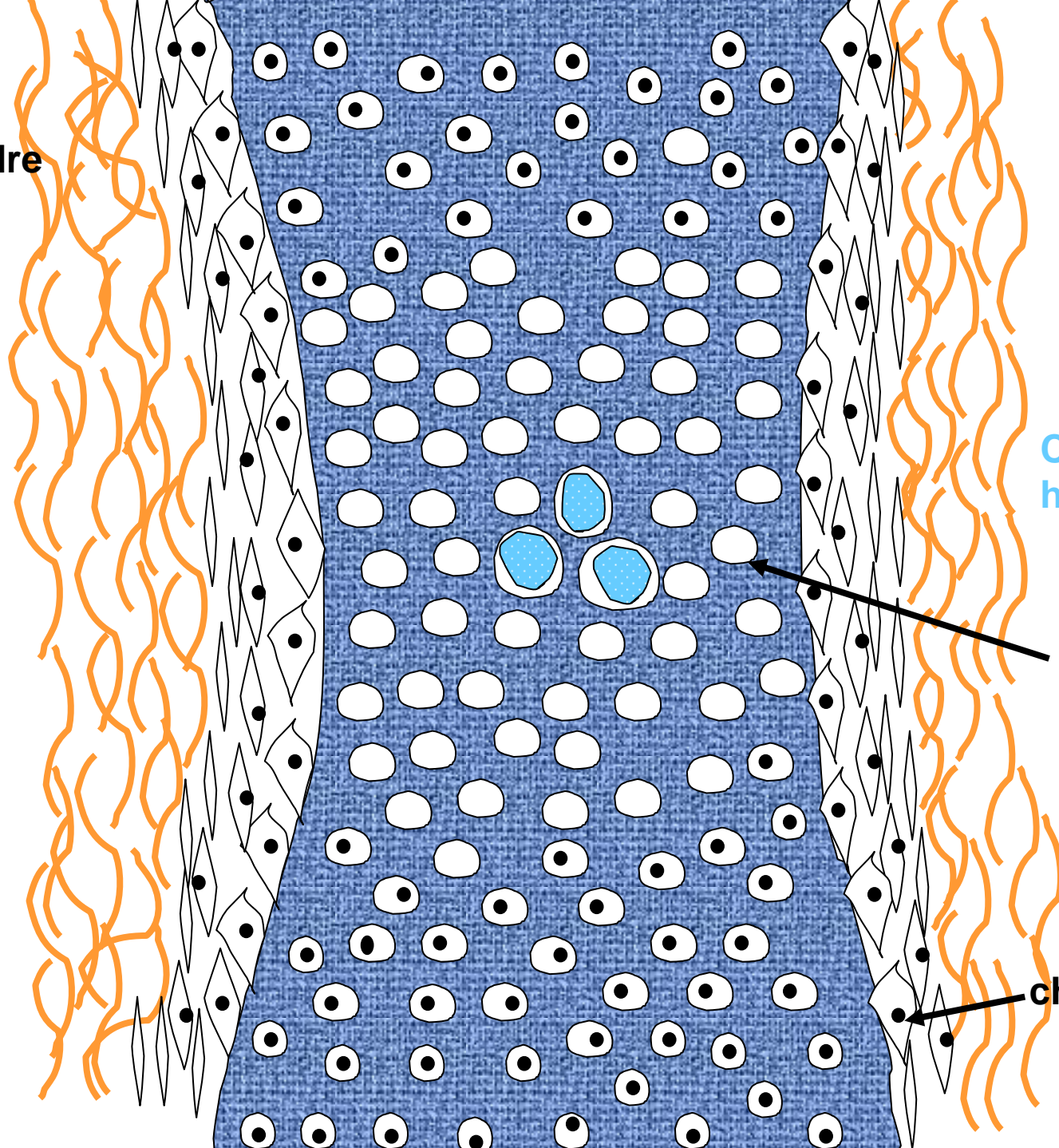


Chondrocyte hypertrophié

chondrocyte

chondroblaste

périchondre

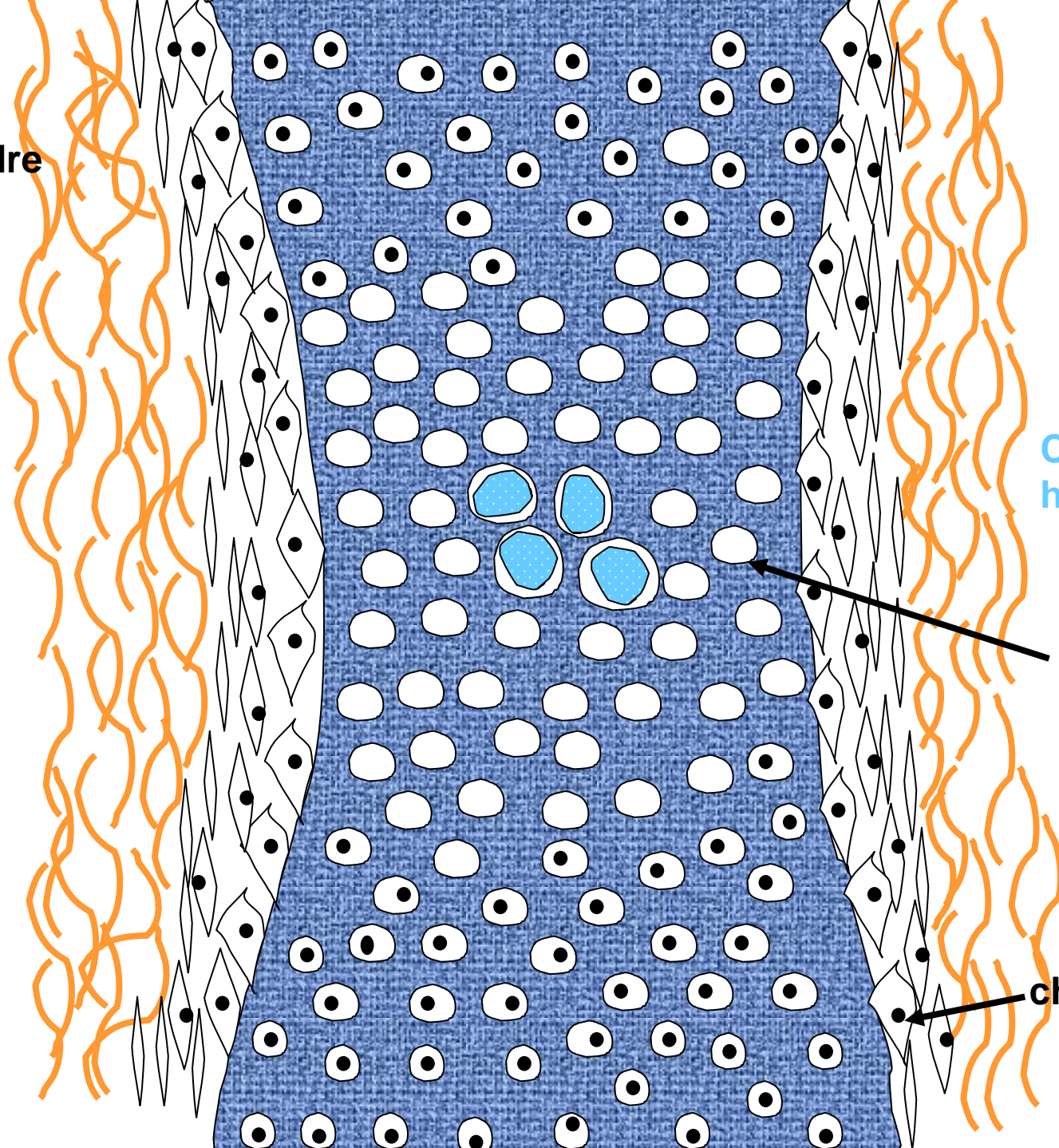


Chondrocyte hypertrophié

chondrocyte

chondroblaste

périchondre

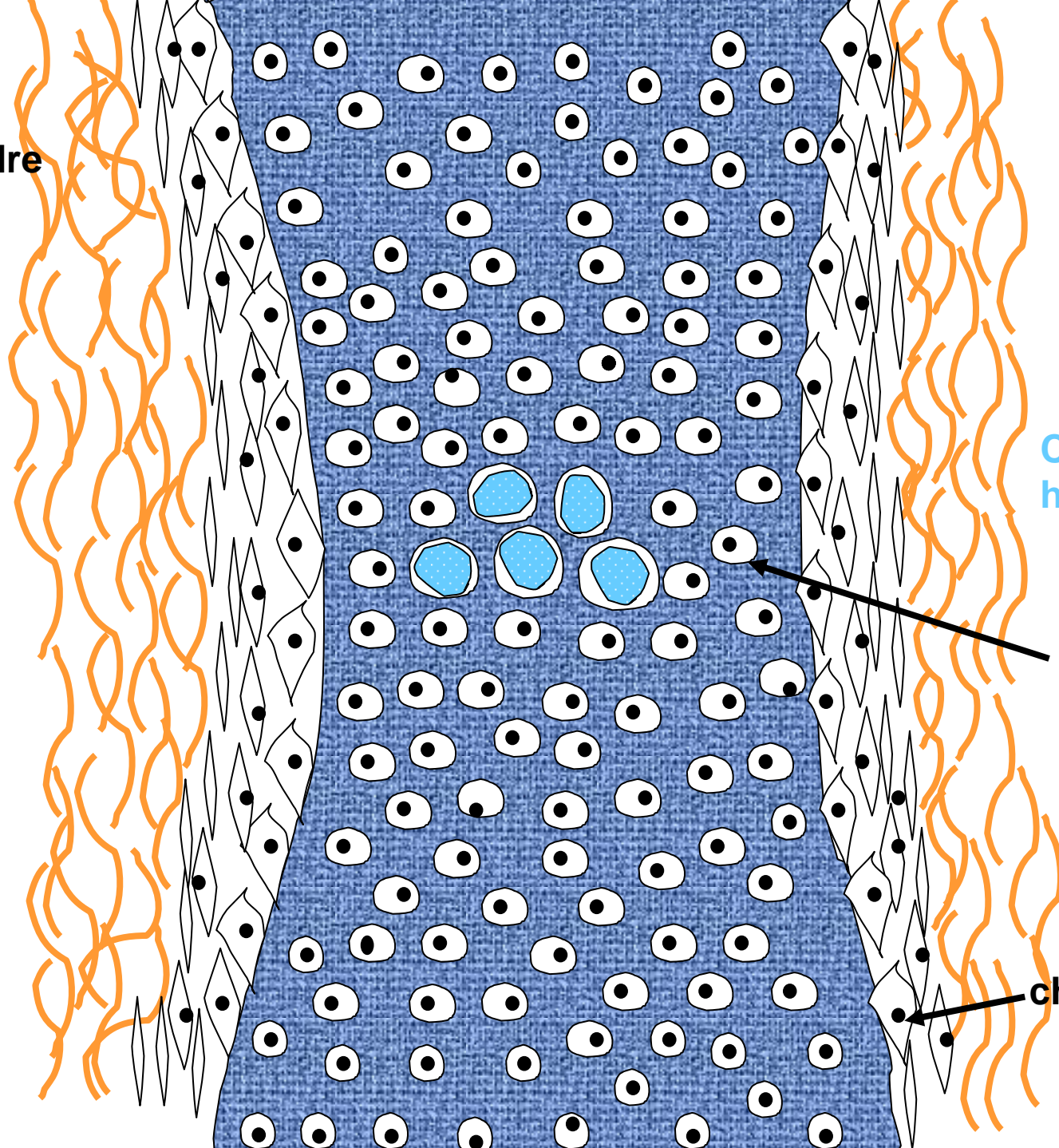


Chondrocyte hypertrophié

chondrocyte

chondroblaste

périchondre



Chondrocyte hypertrophié

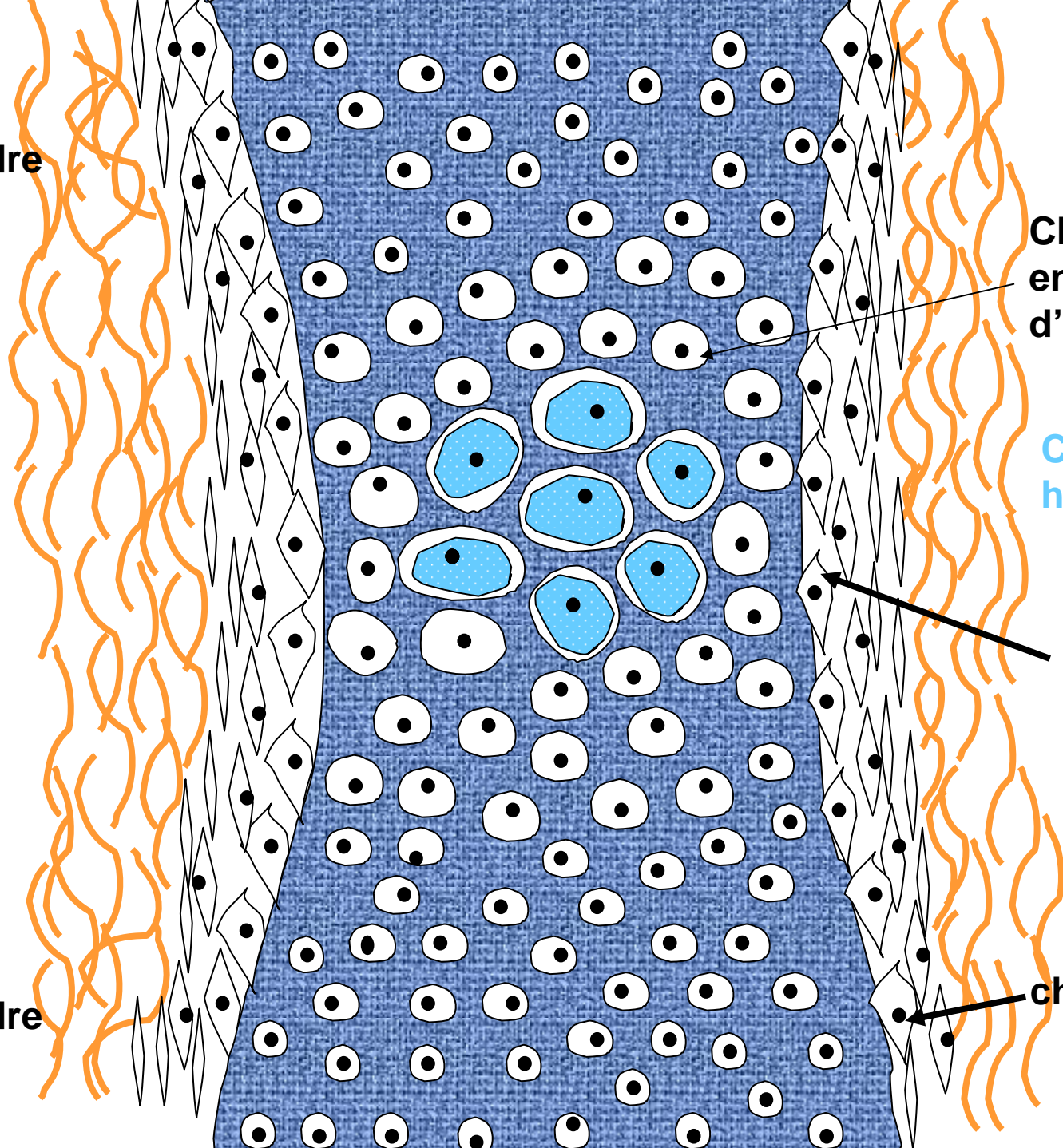
chondrocyte

chondroblaste

périchondre

périoste

périchondre



Chondrocyte
en voie
d'hypertrophie

Chondrocyte
hypertrophié

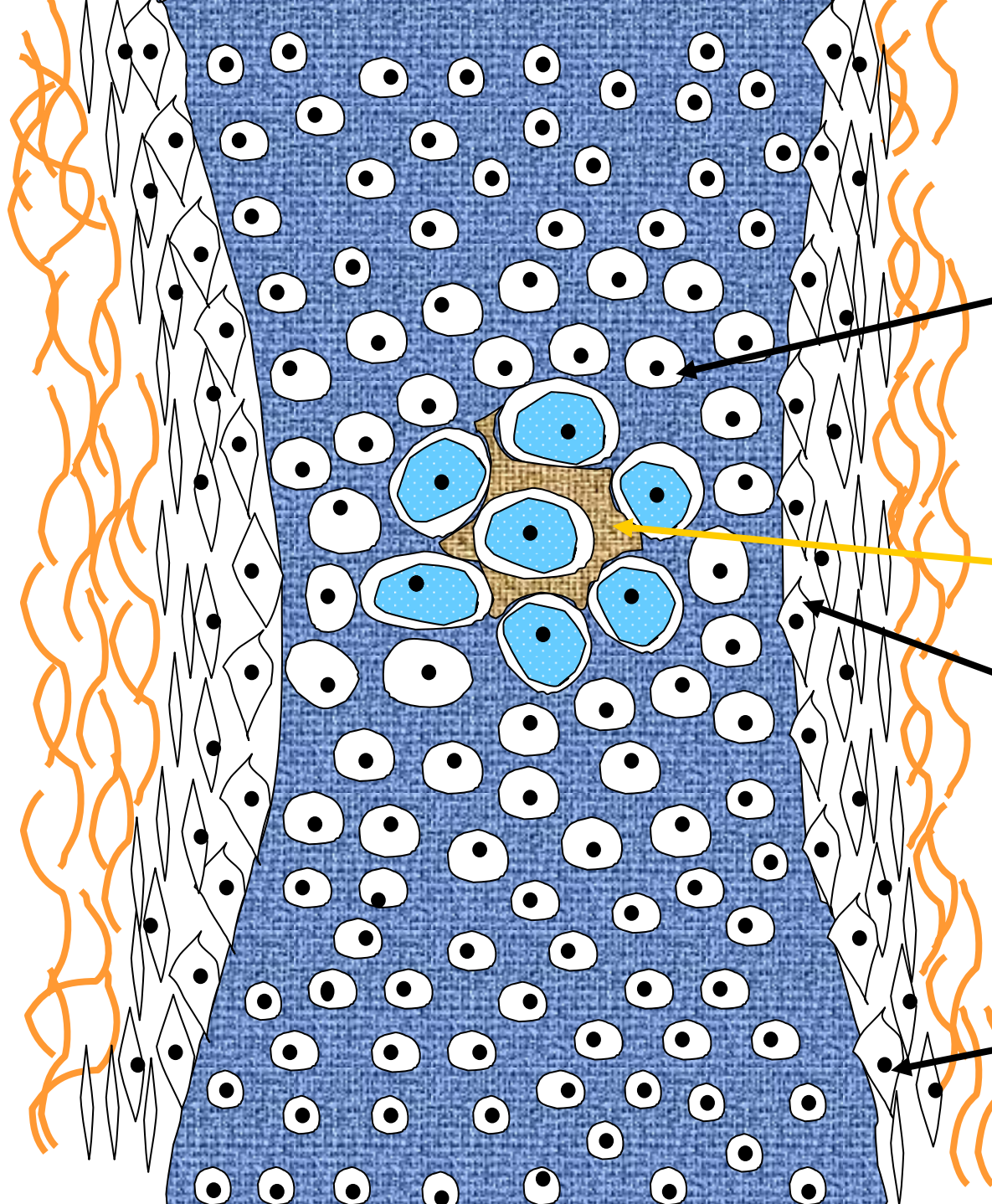
ostéoblaste

chondroblaste

périchondre

périoste

périchondre



Chondrocyte
en voie
d'hypertrophie

Chondrocyte
hypertrophié

Cartilage
calcifié

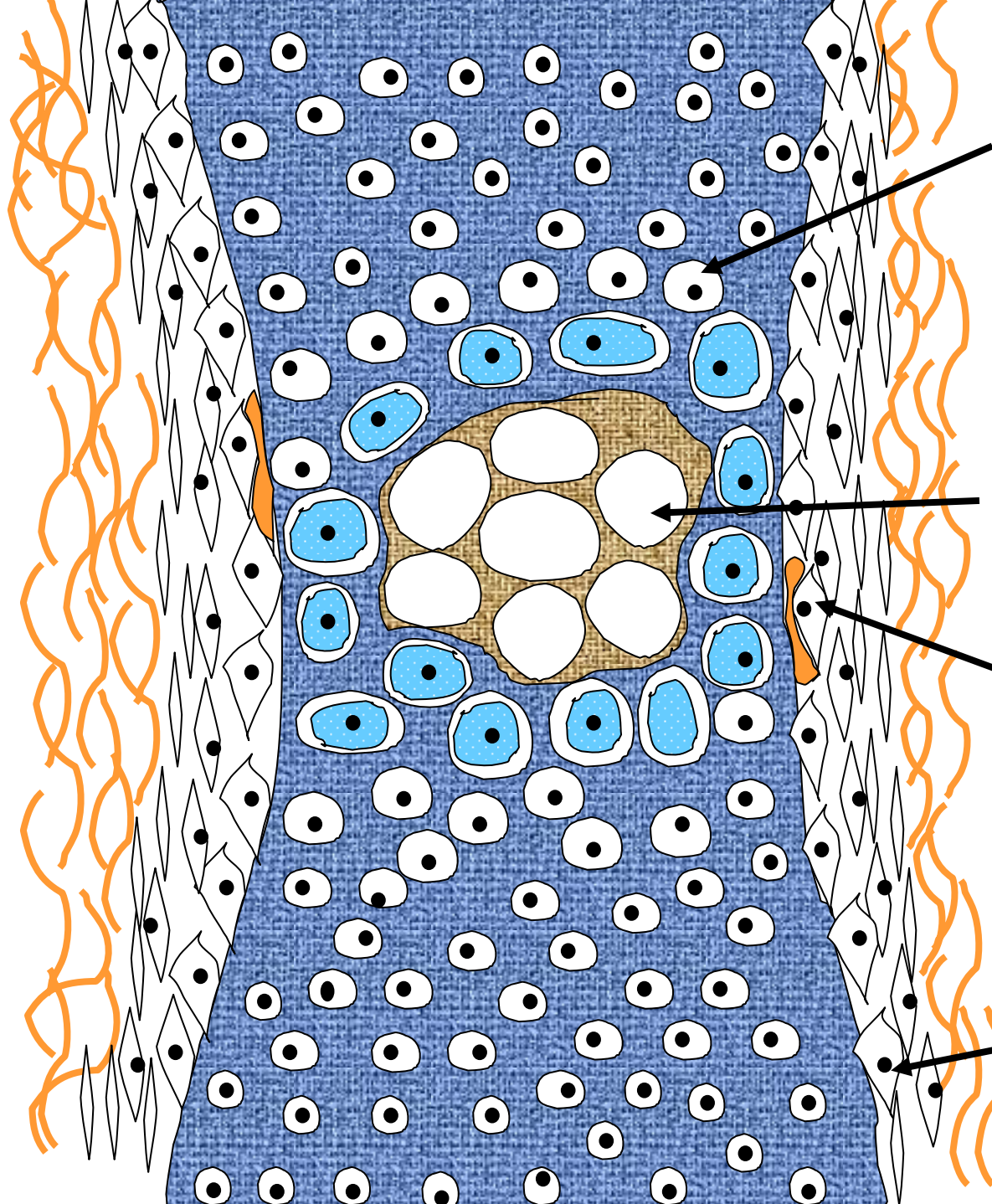
ostéoblaste

chondroblaste

périchondre

périoste

périchondre



Chondrocyte
en voie
d'hypertrophie

Chondrocyte
hypertrophié

Cartilage
calcifié

Chondrocyte
vide

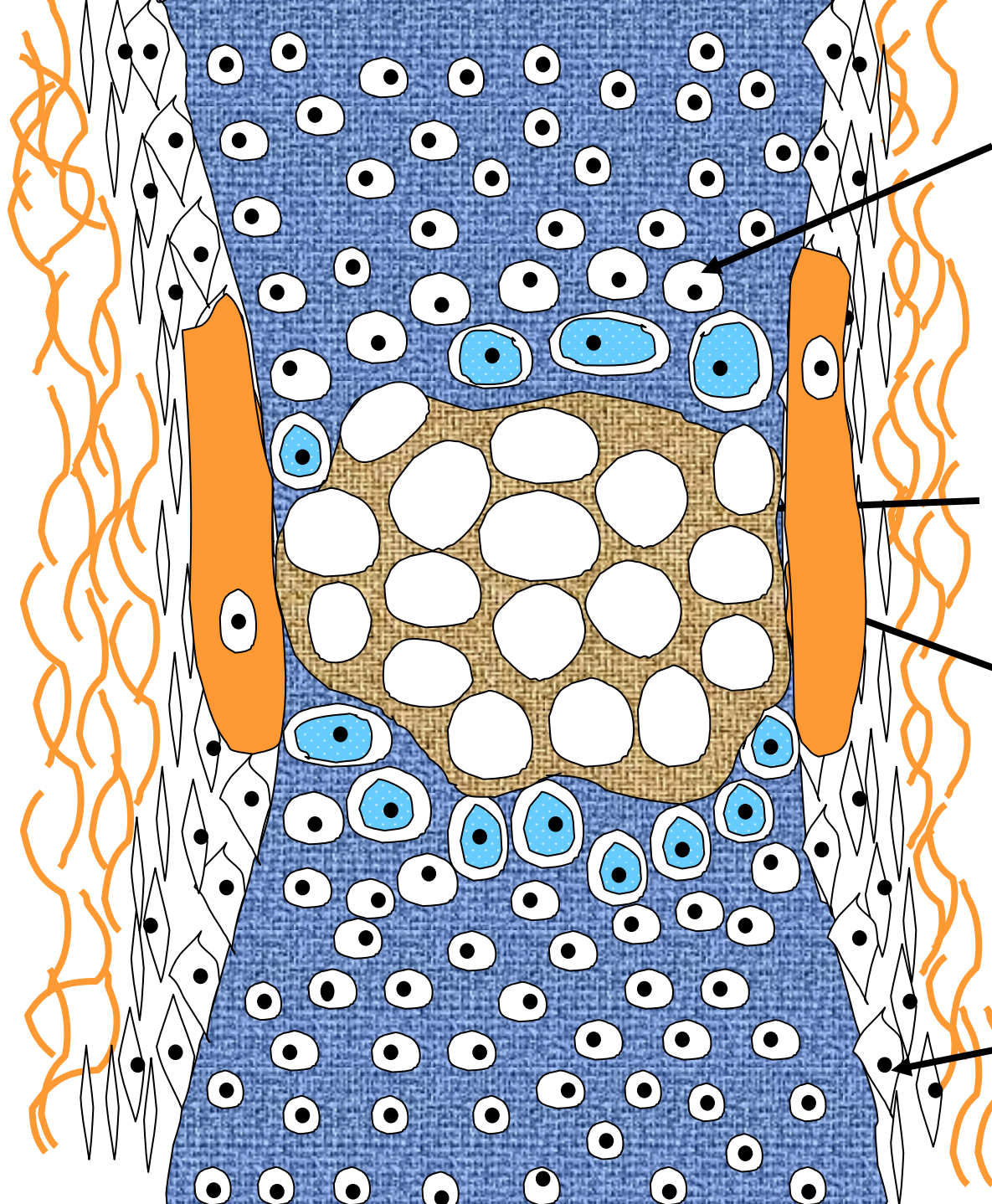
ostéoblaste

chondroblaste

périchondre

périoste

périchondre



Chondrocyte en voie d'hypertrophie

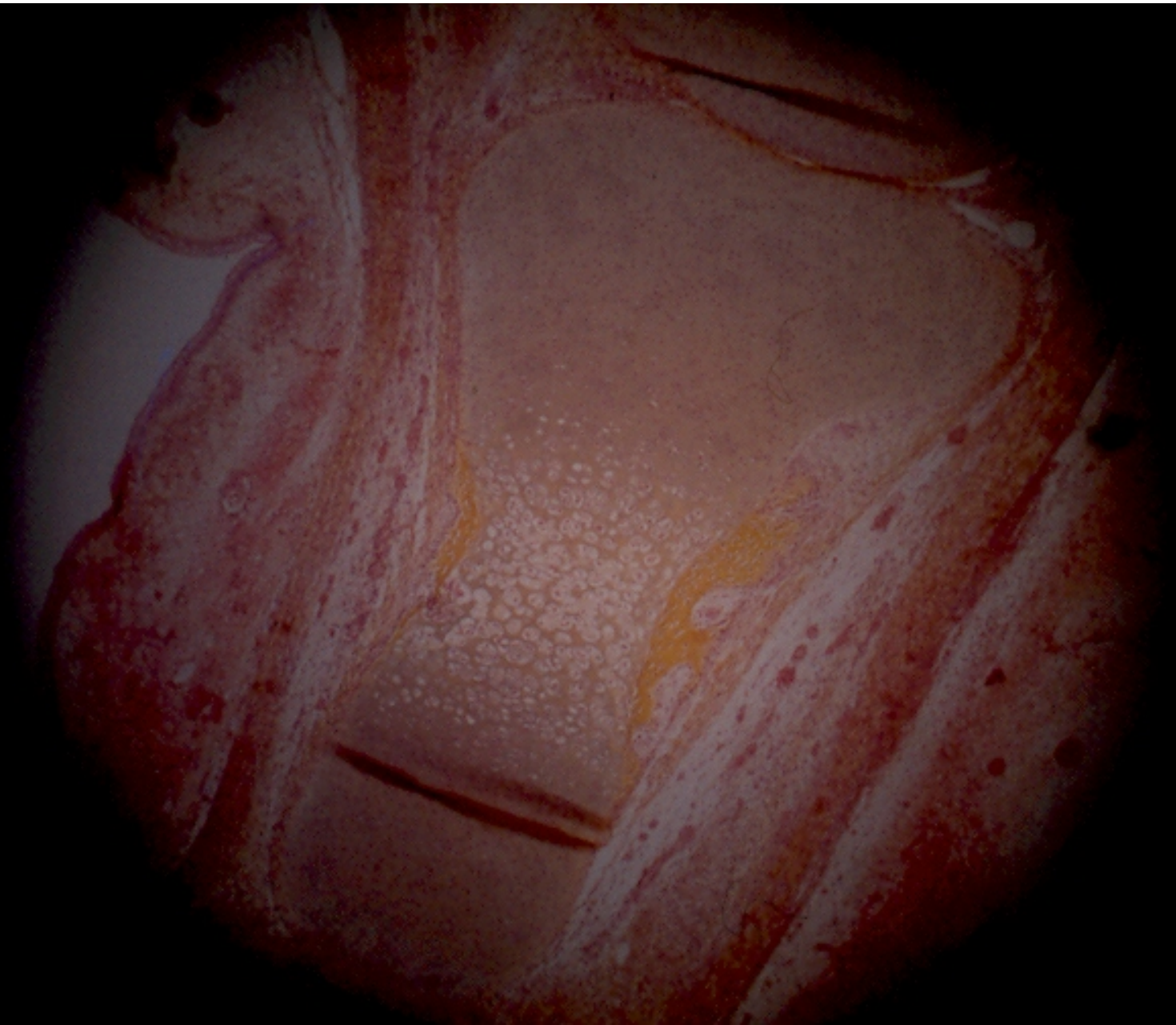
Chondrocyte hypertrophié

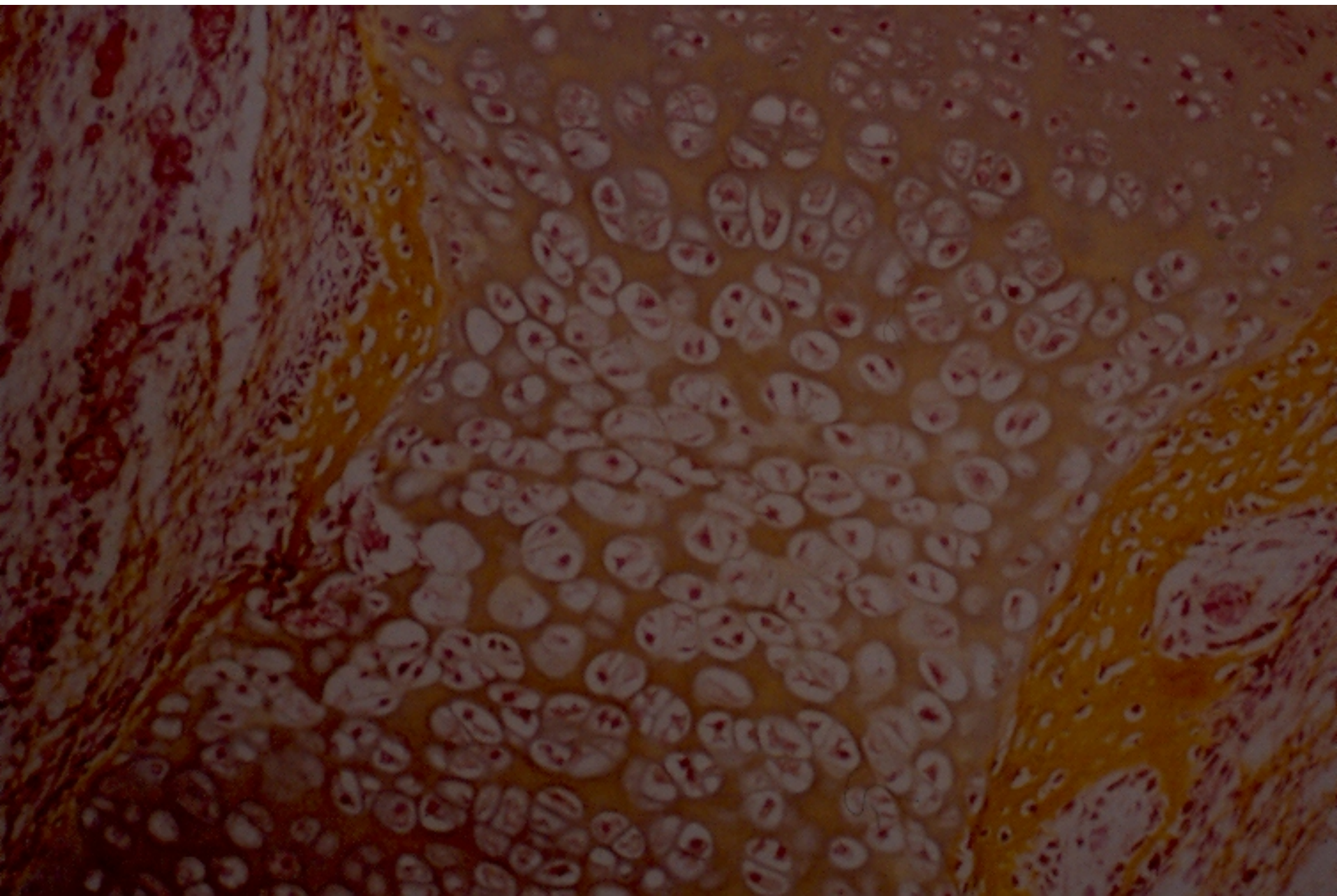
Cartilage calcifié

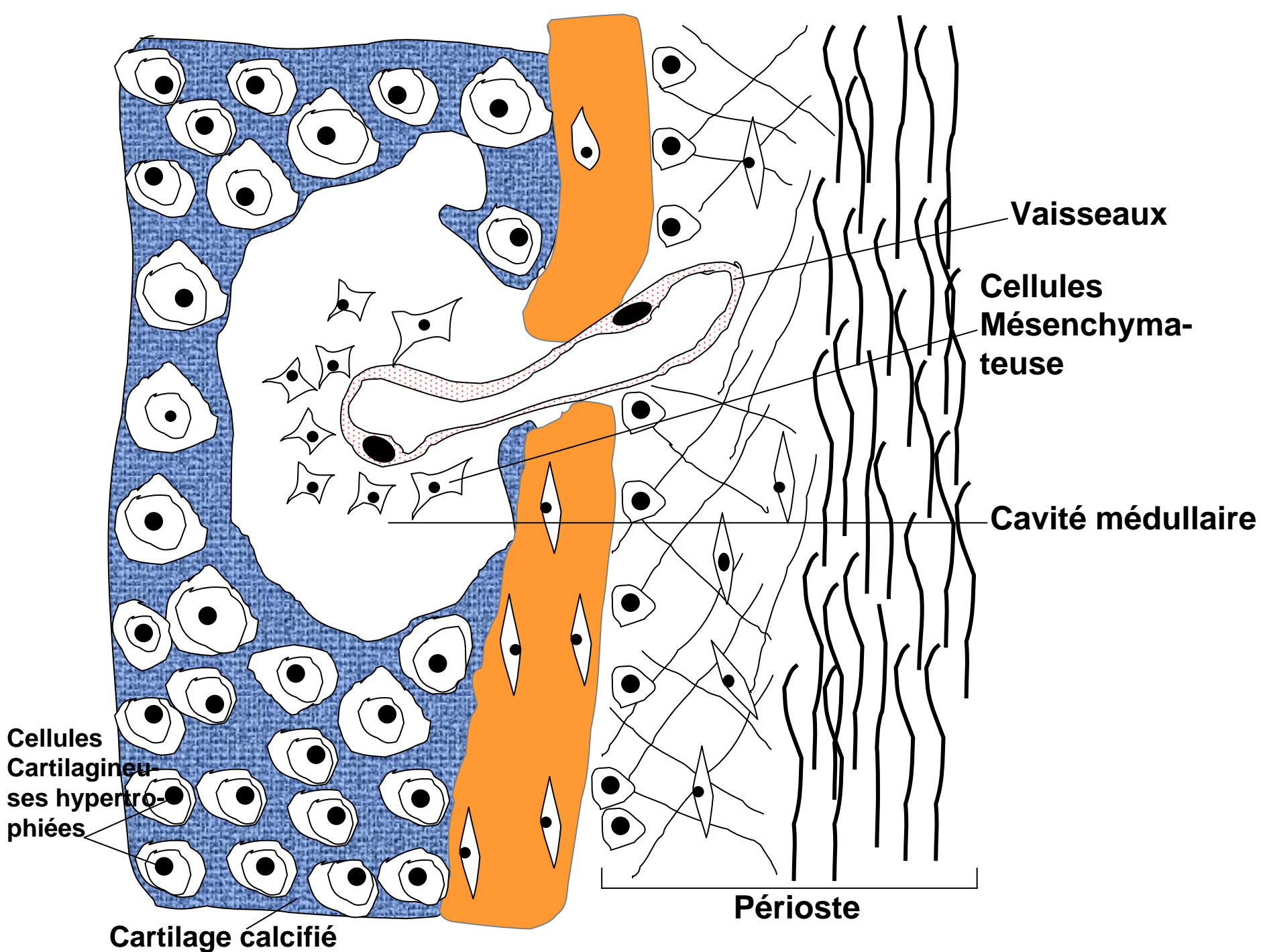
Chondrocyte vide

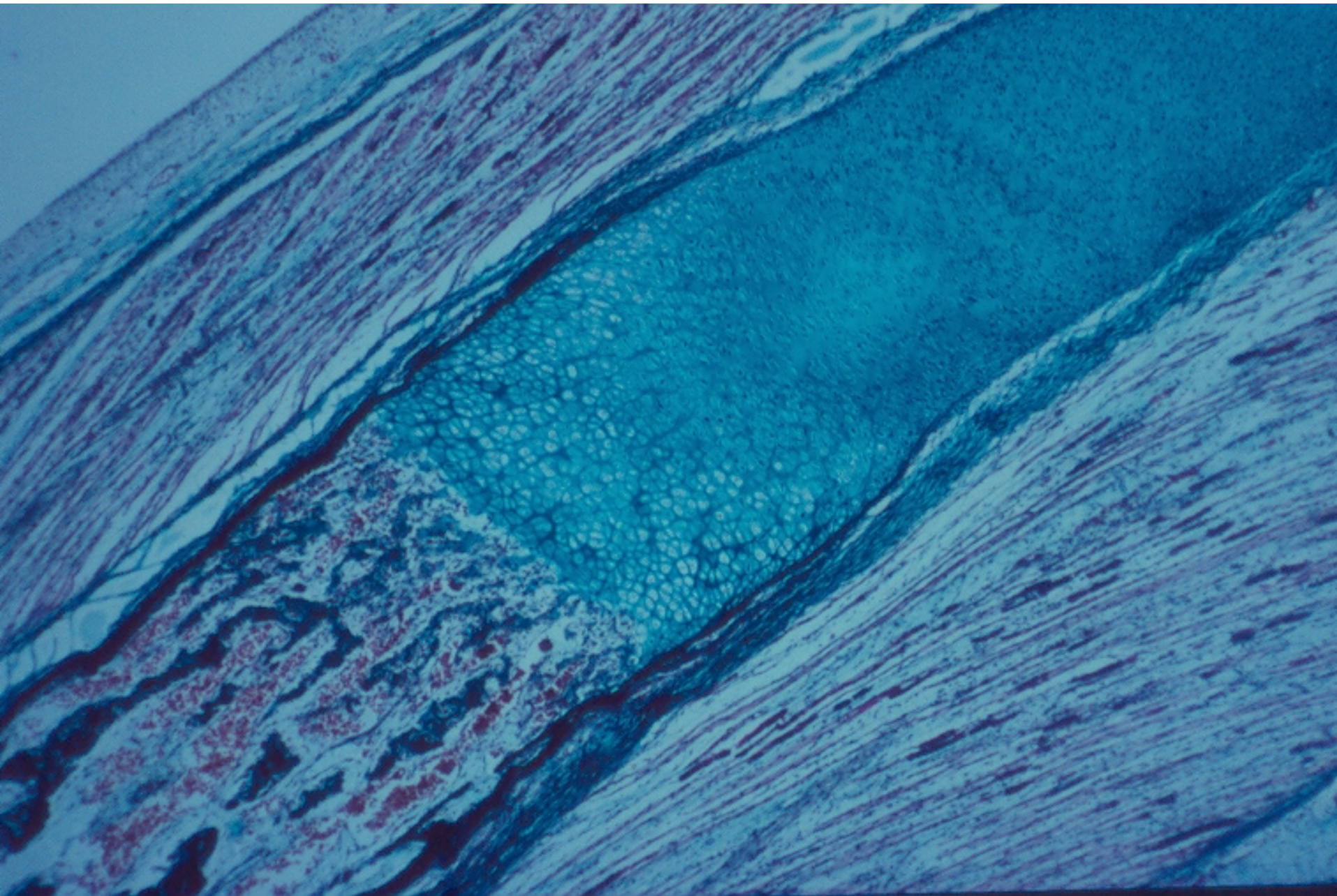
ostéoblaste

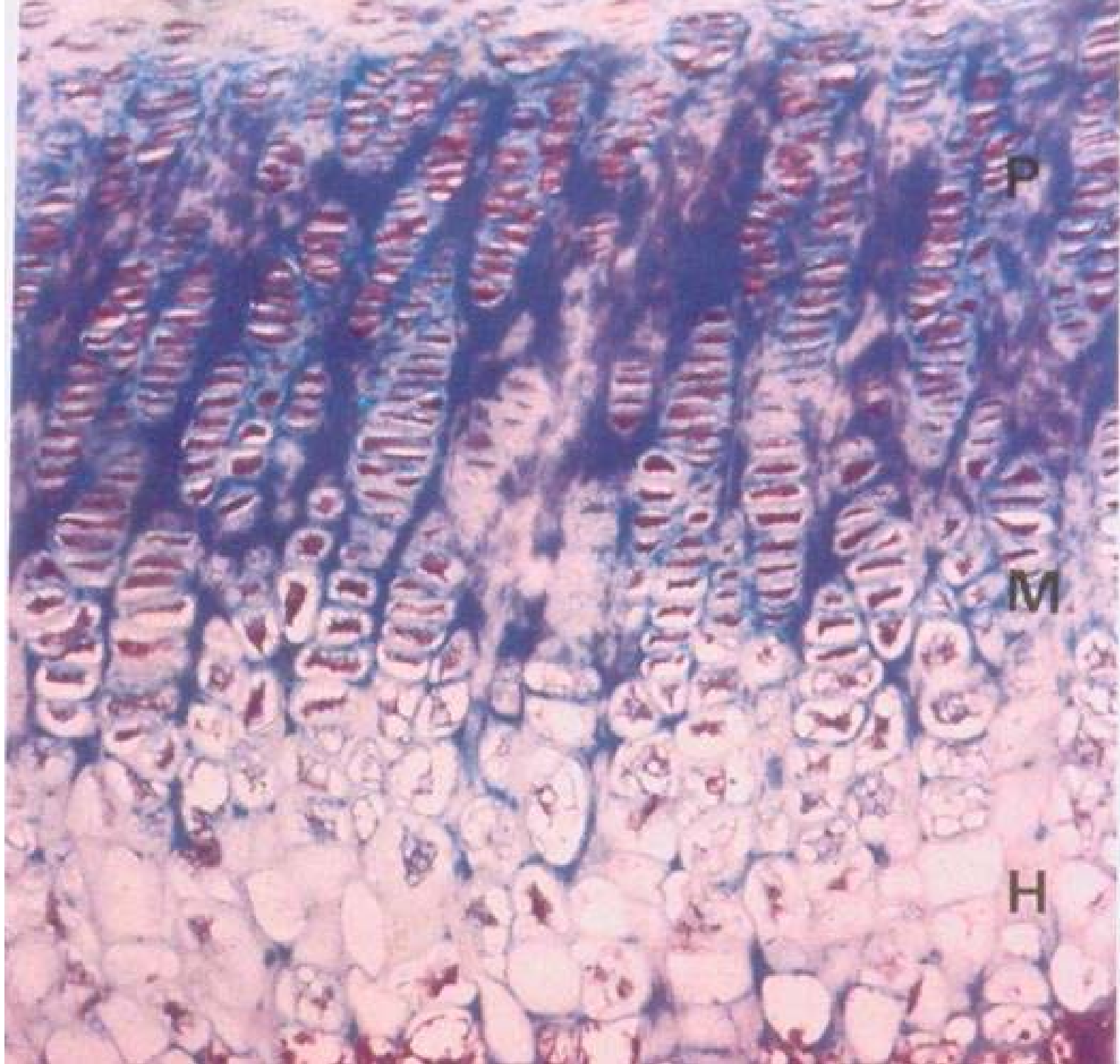
chondroblaste

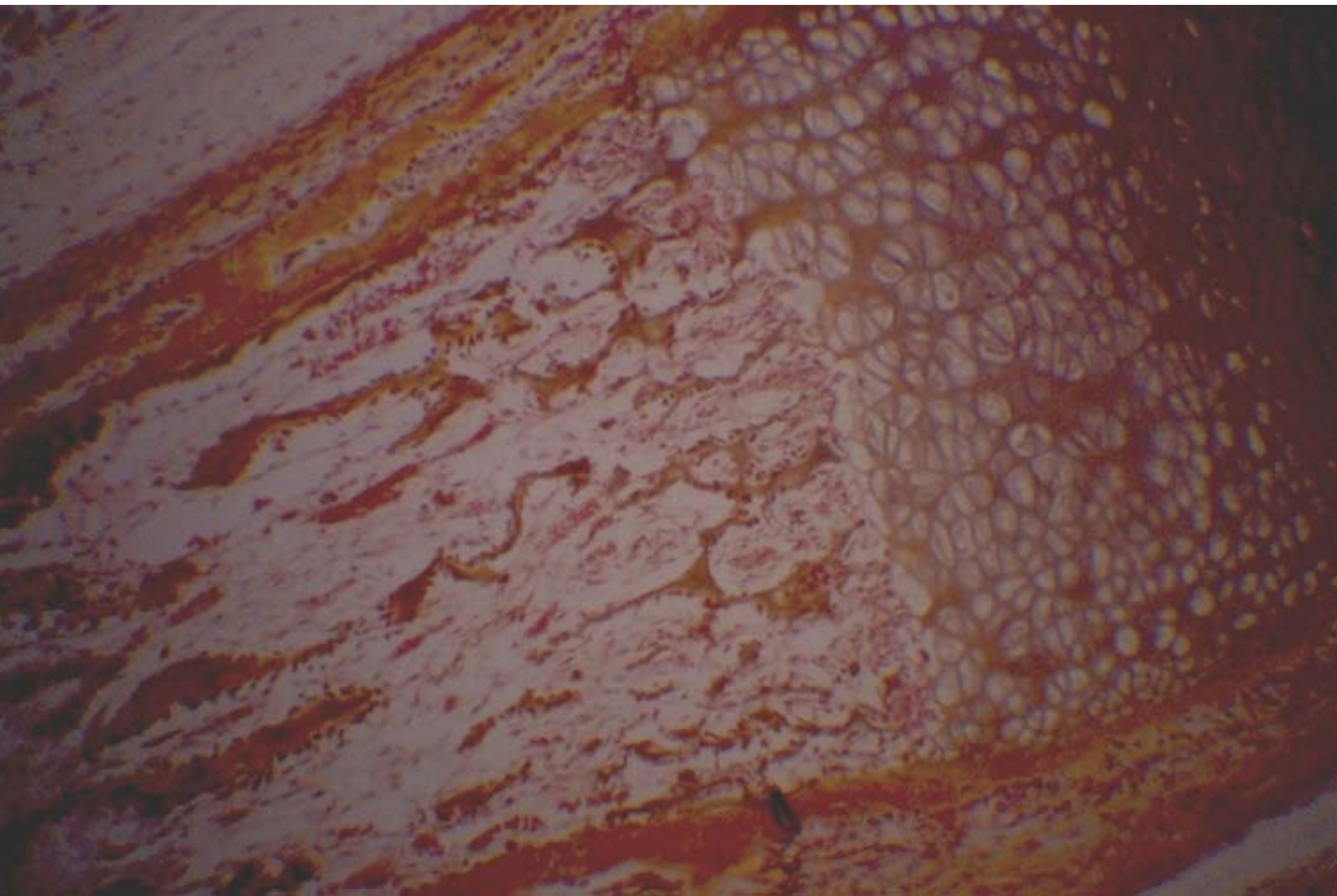


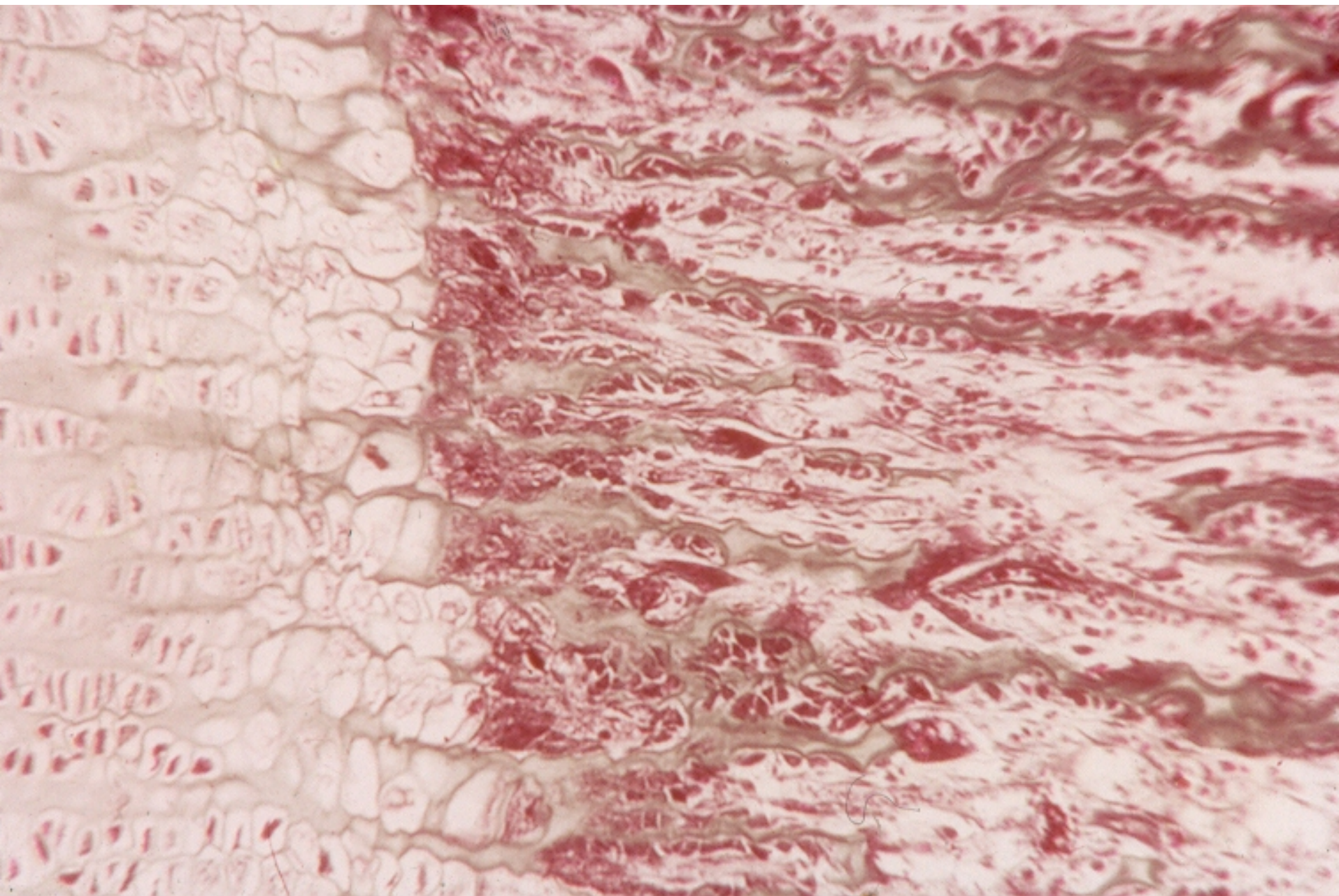


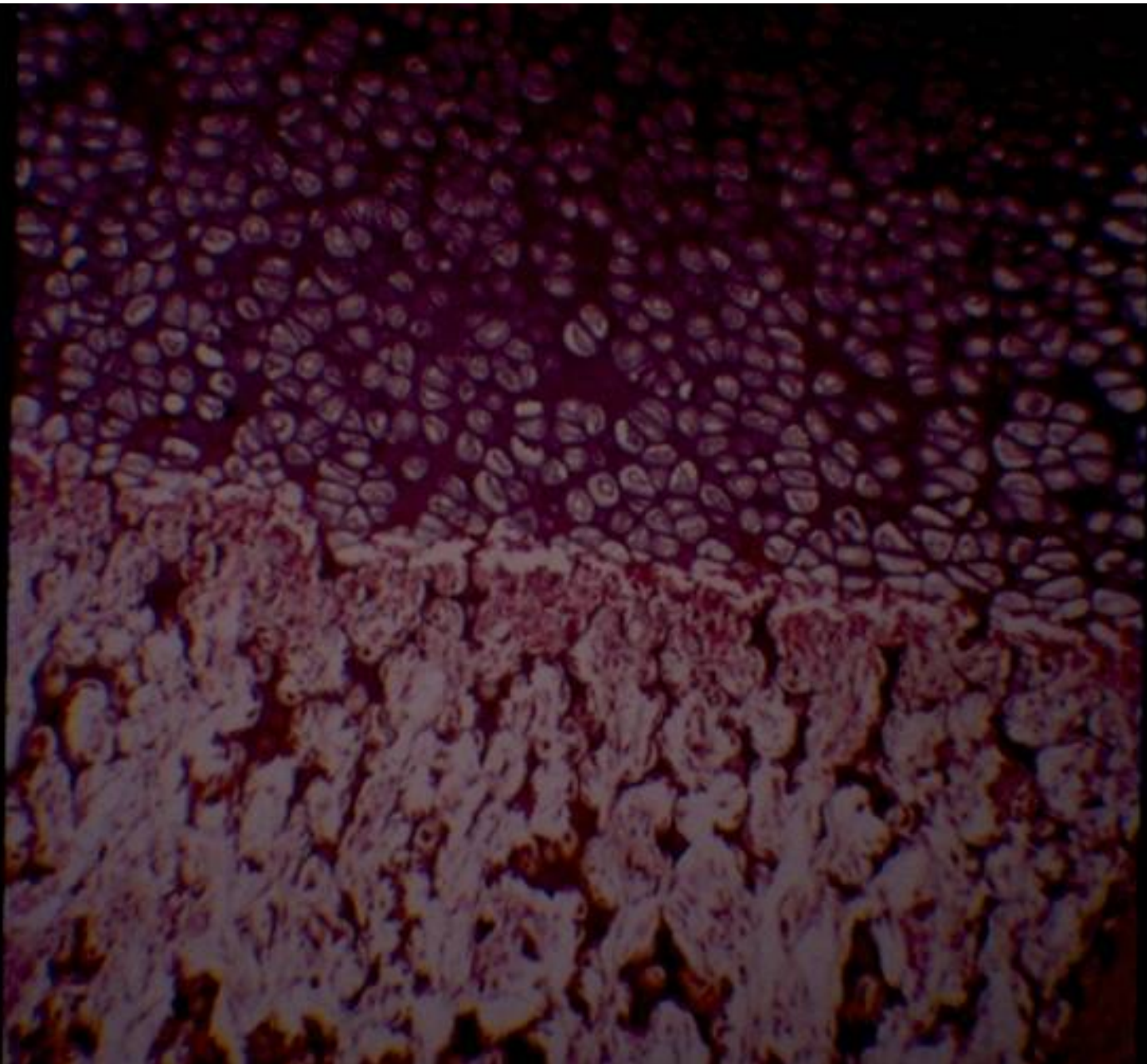


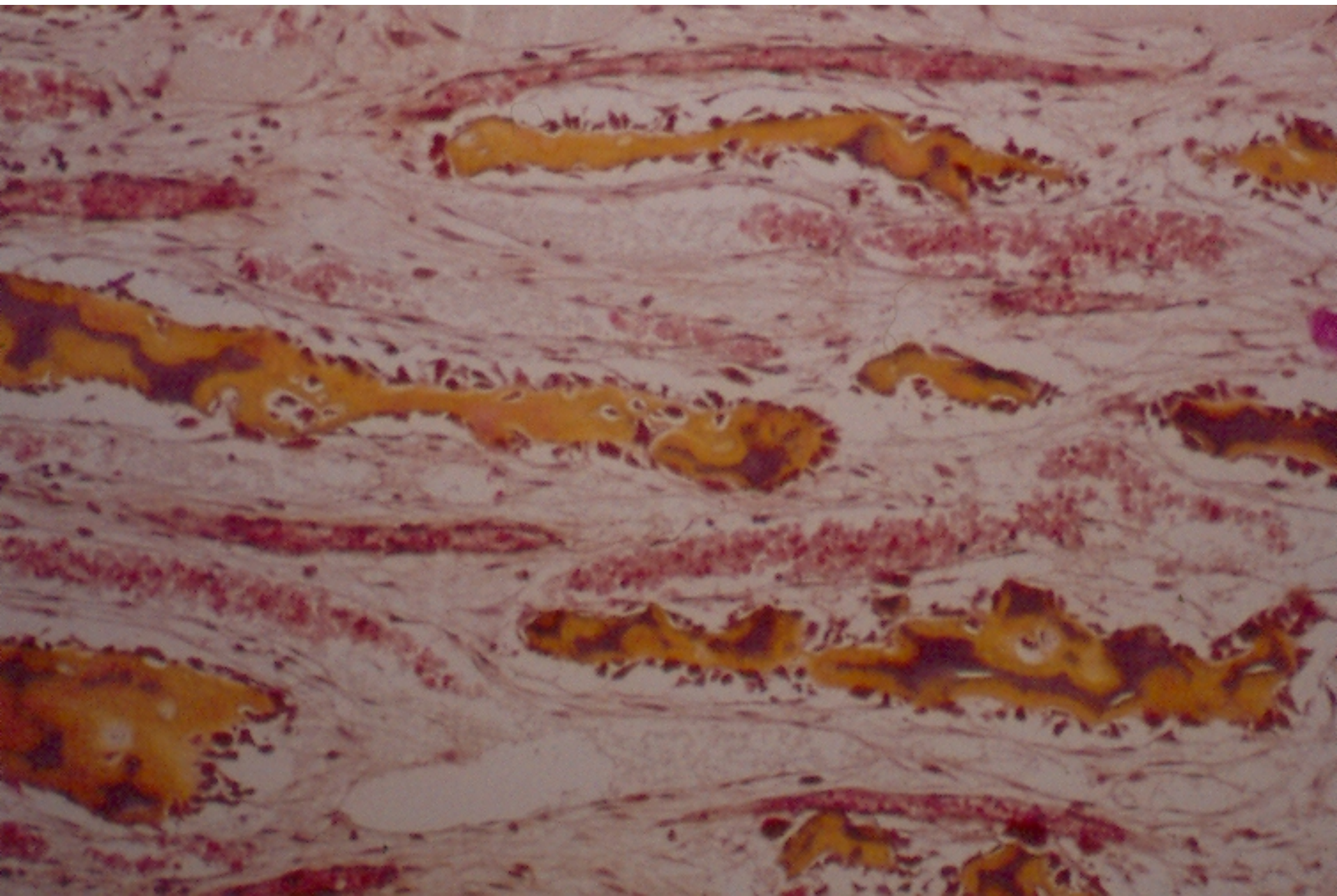


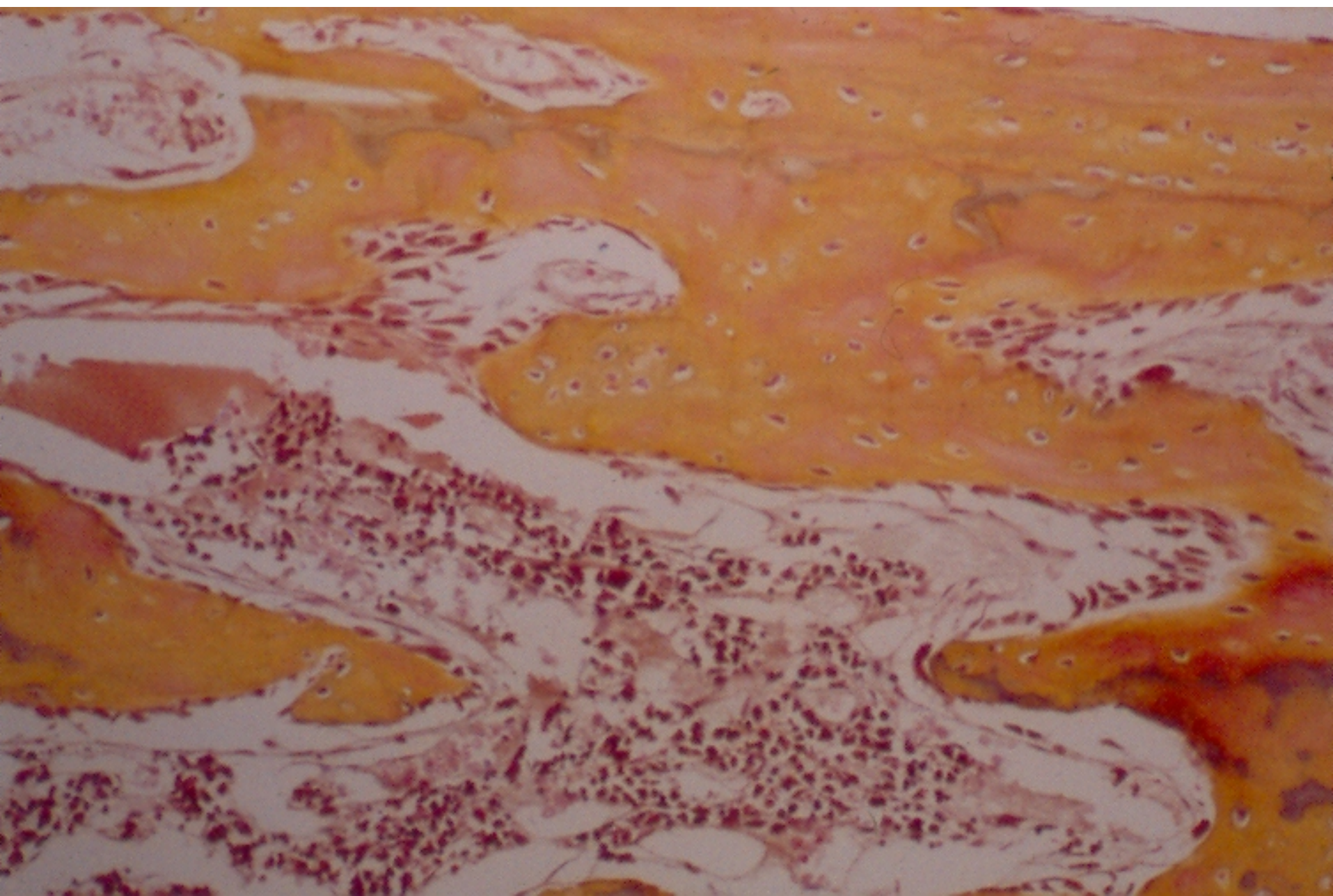


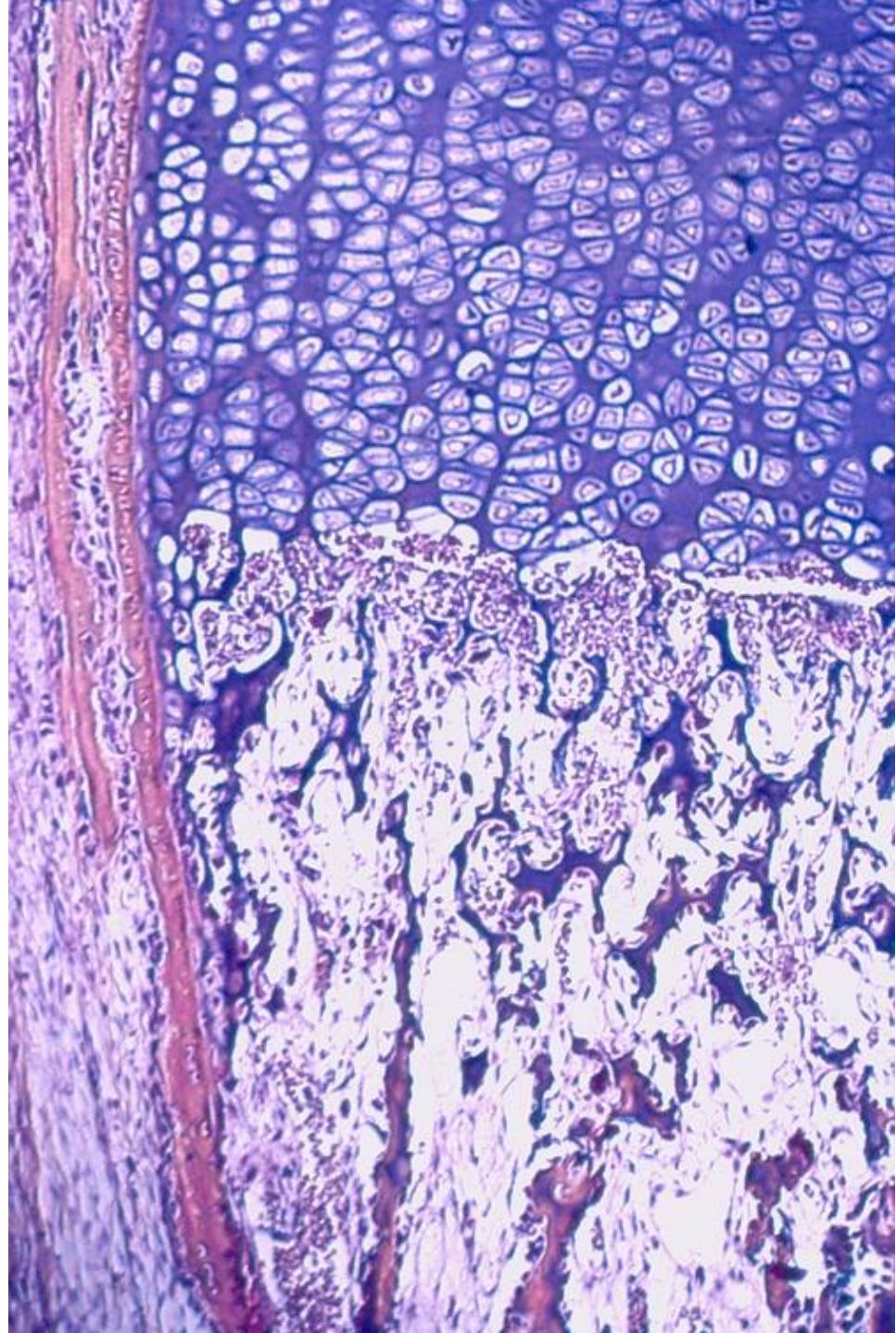




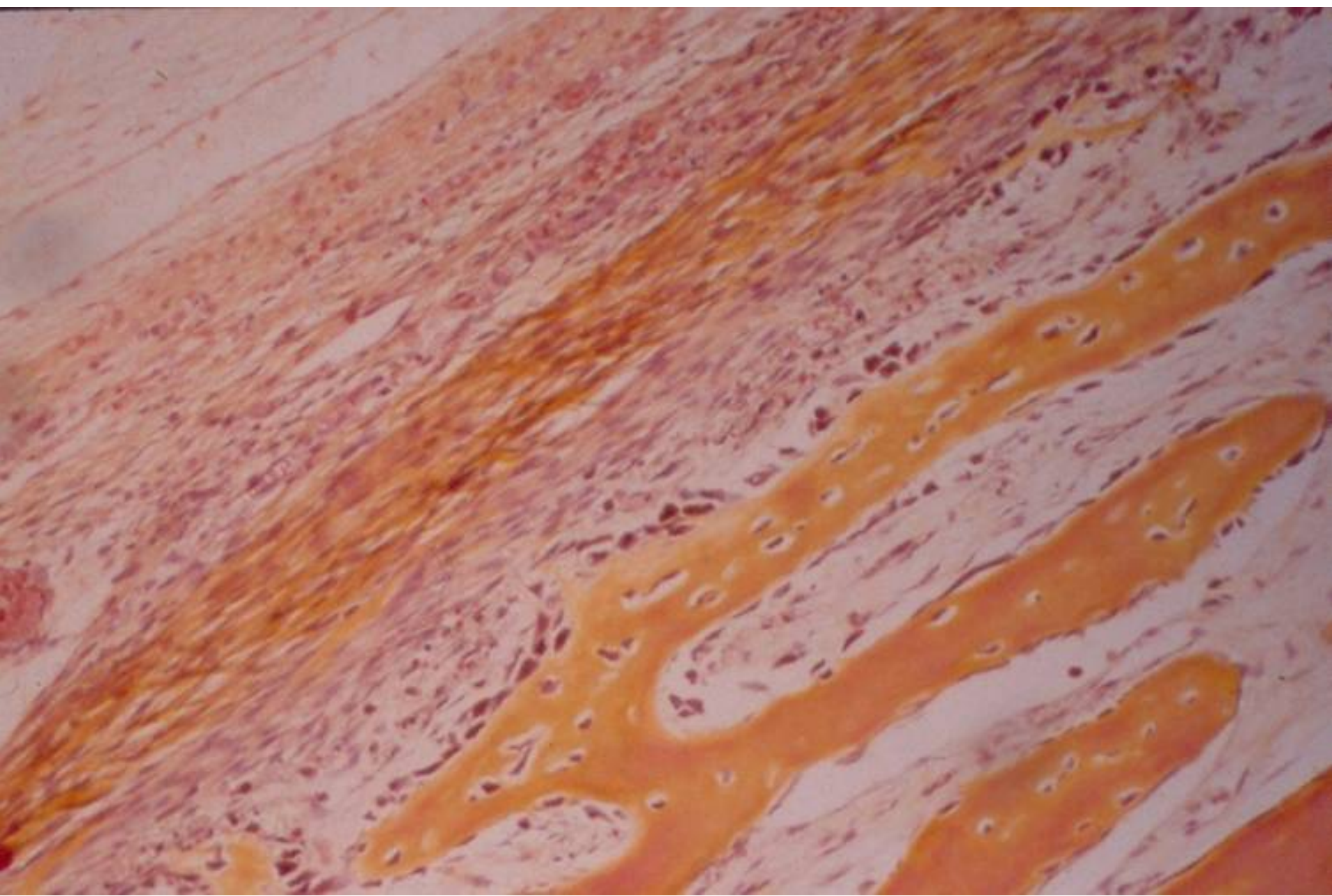












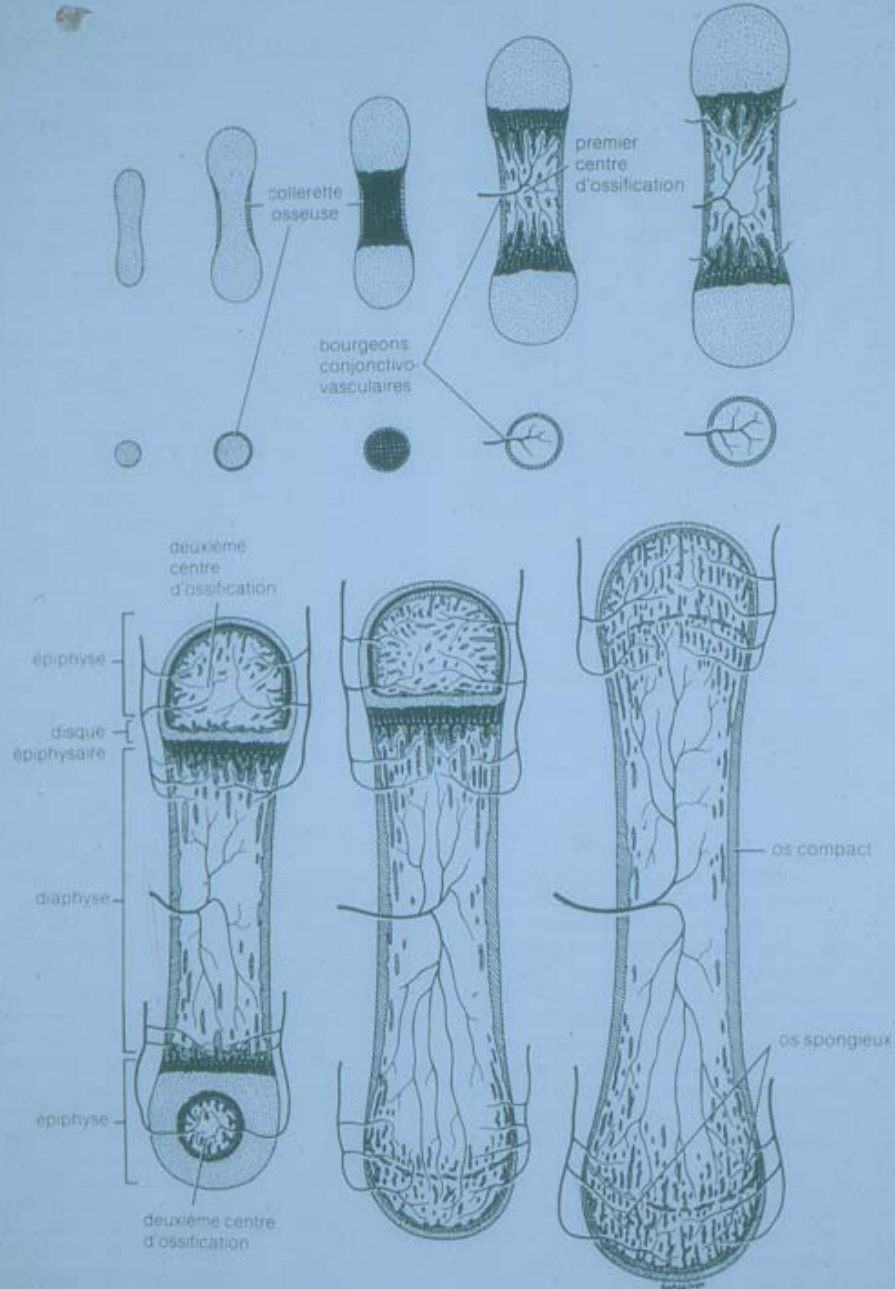
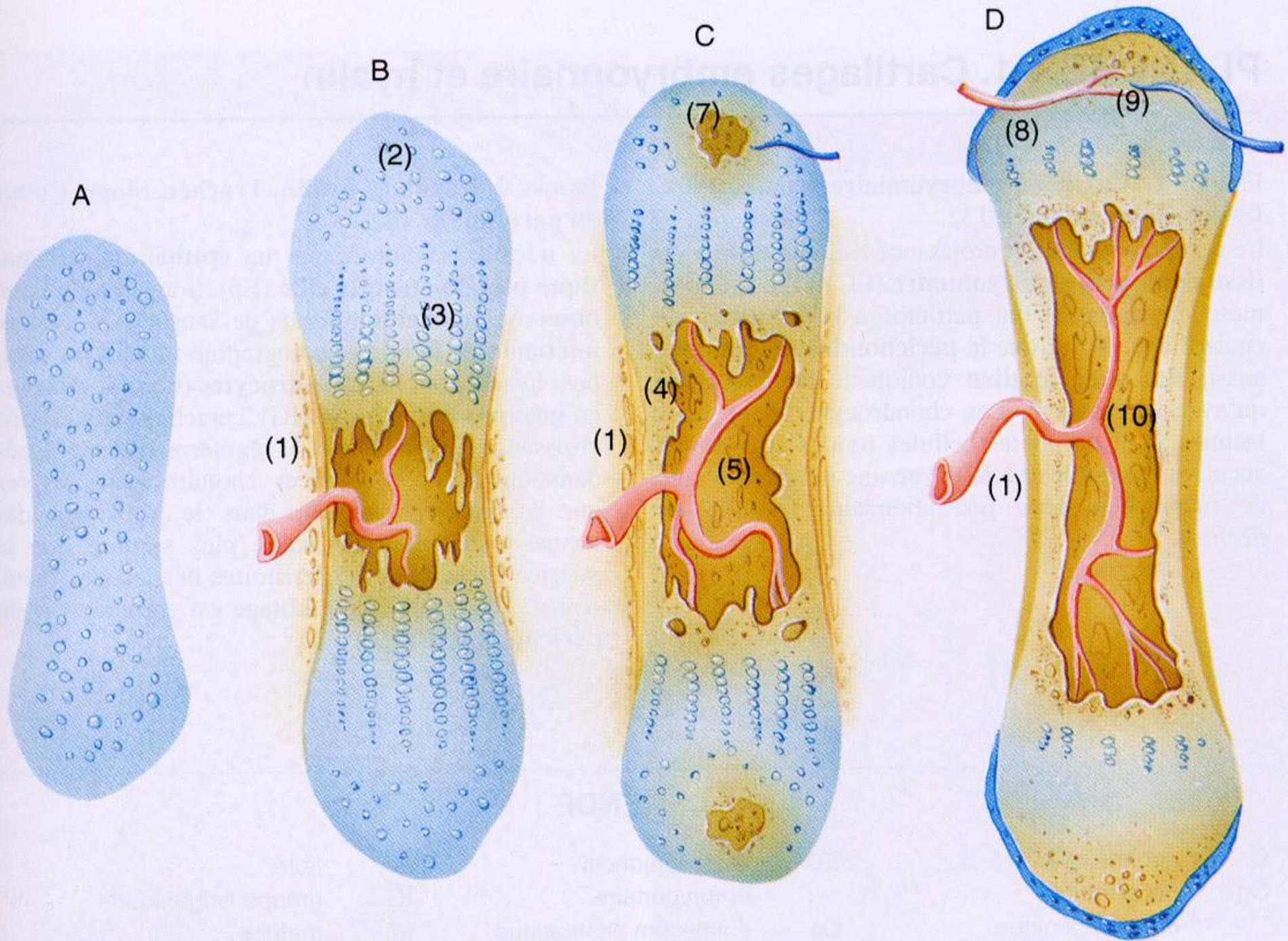
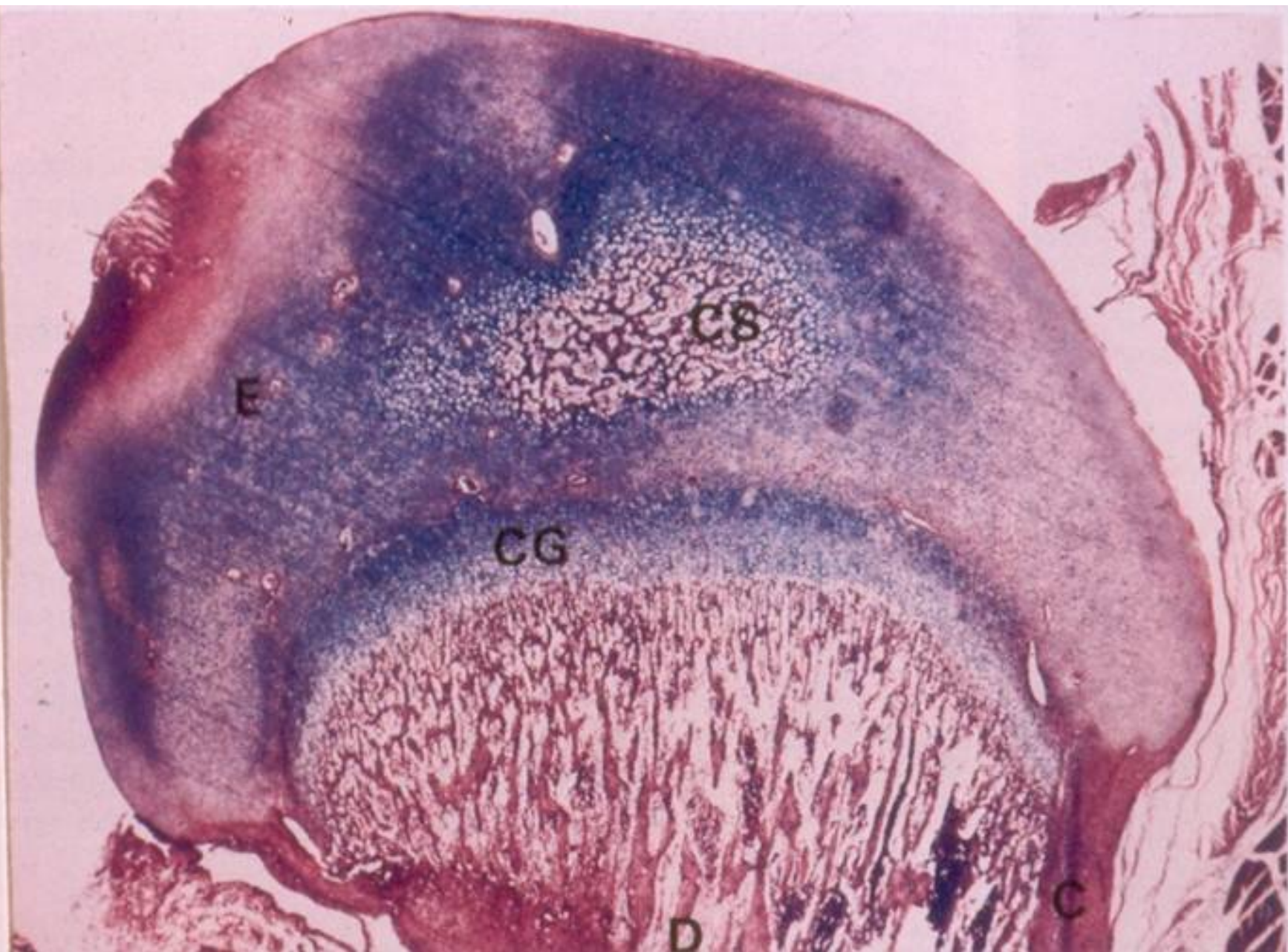
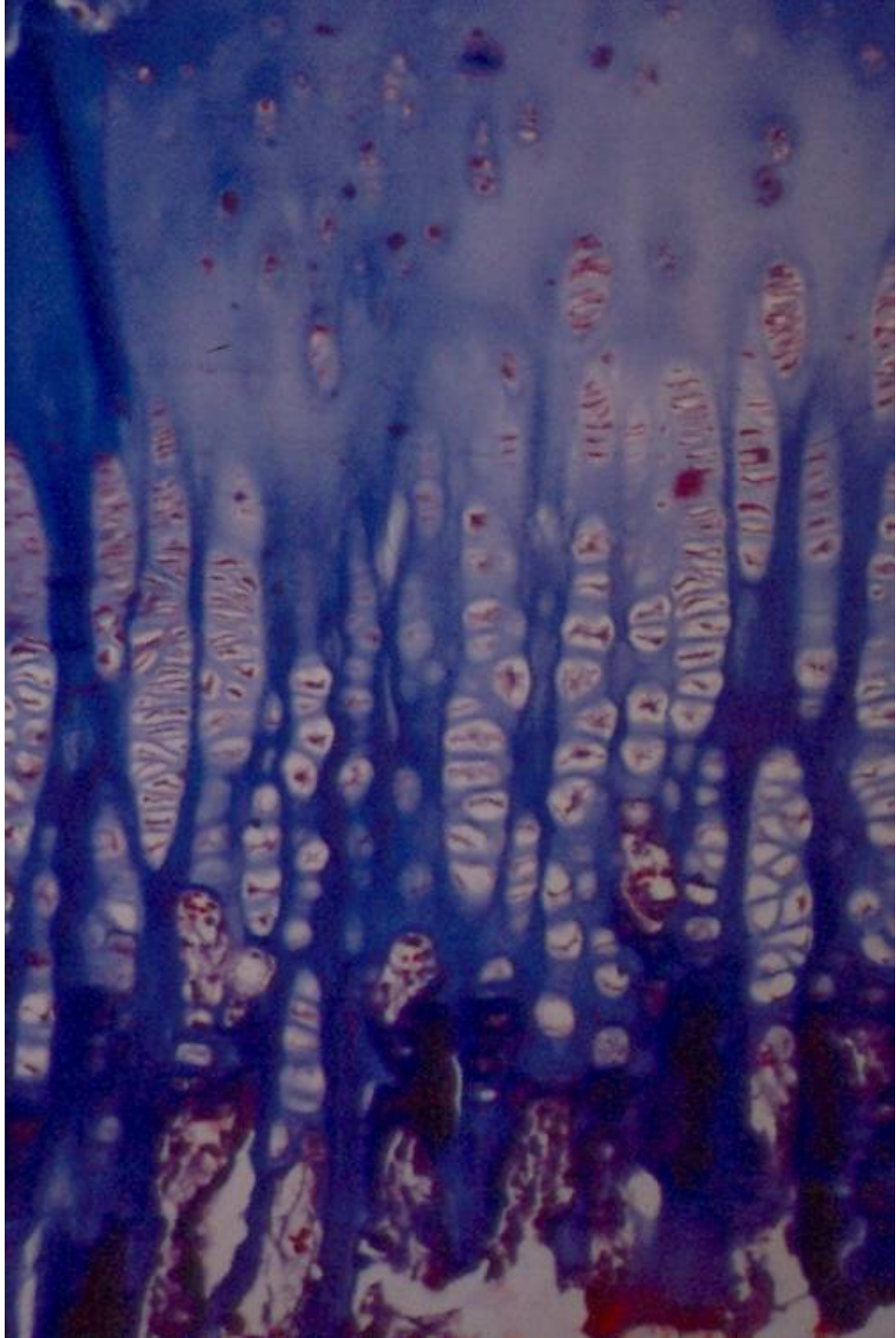


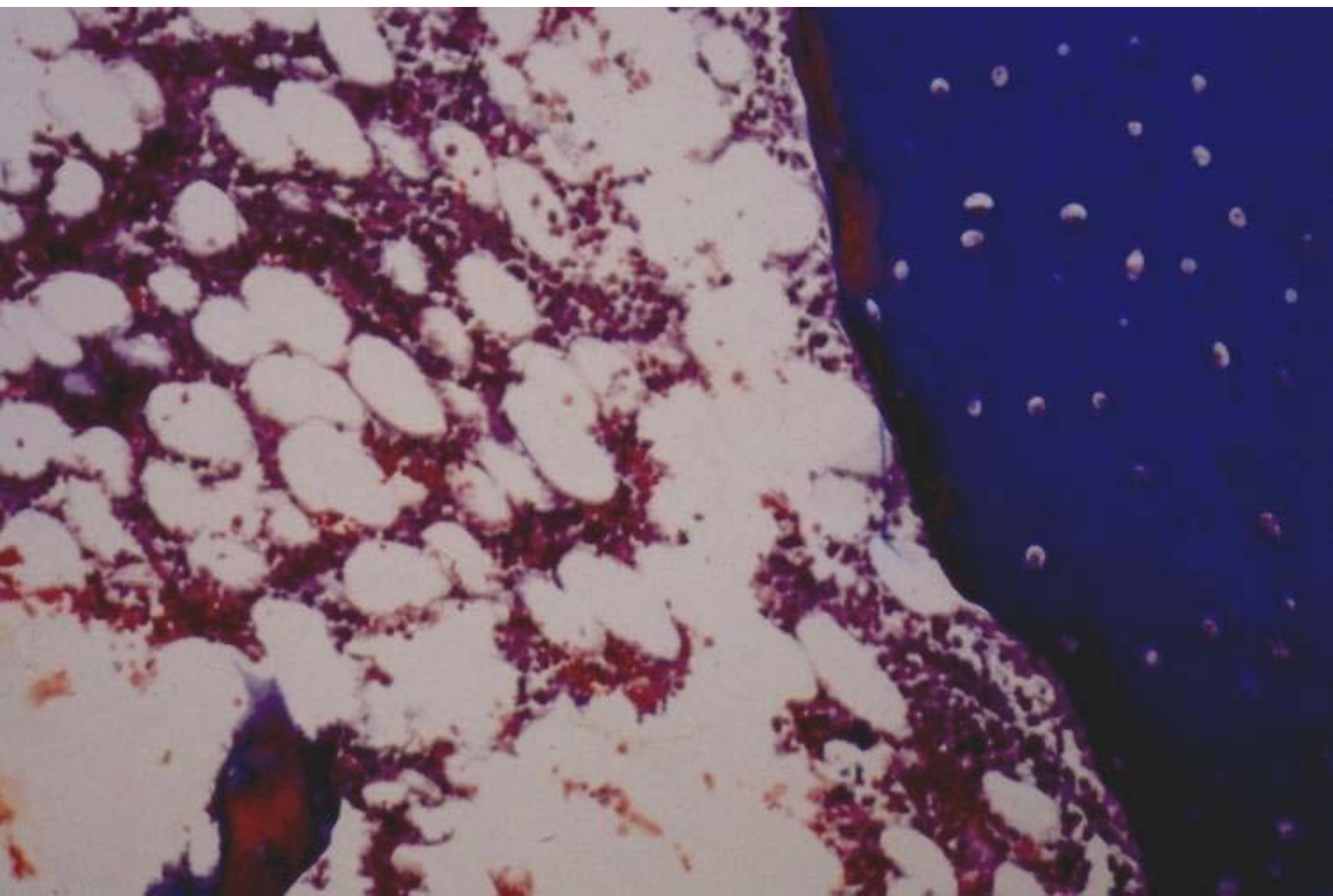
Figure 8-9. Formation d'un os long à partir d'un modèle cartilagineux. Le cartilage hyalin est en pointillé, le cartilage calcaire en noir et le tissu osseux en hachuré. Les petits schémas du milieu représentent des coupes transversales médianes des schémas situés au-dessus. (Pour plus de détails, voir le texte). (D'après Bloom W, Fawcett DW. *A textbook of Histology*, 9th ed. Saunders, 1968).

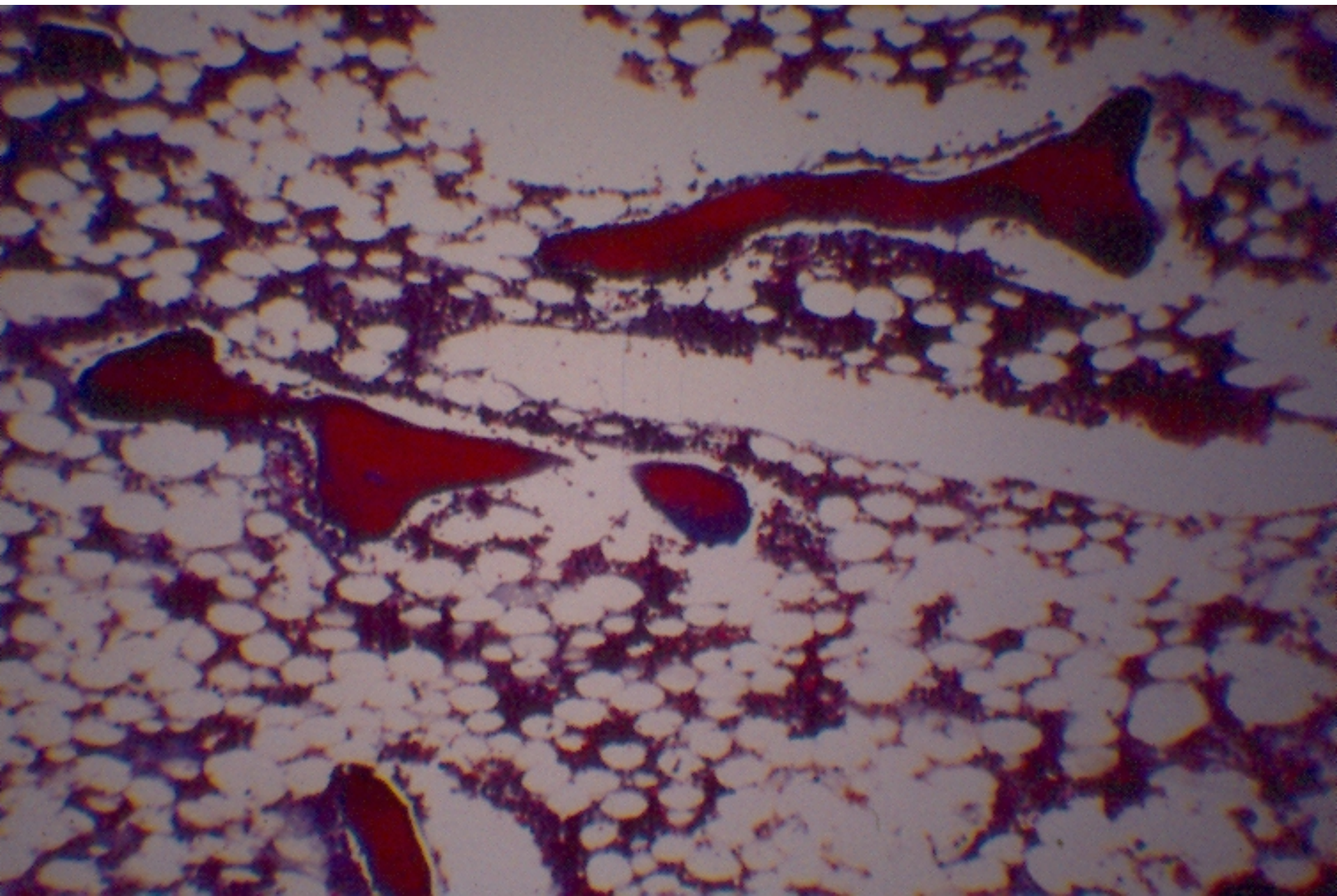


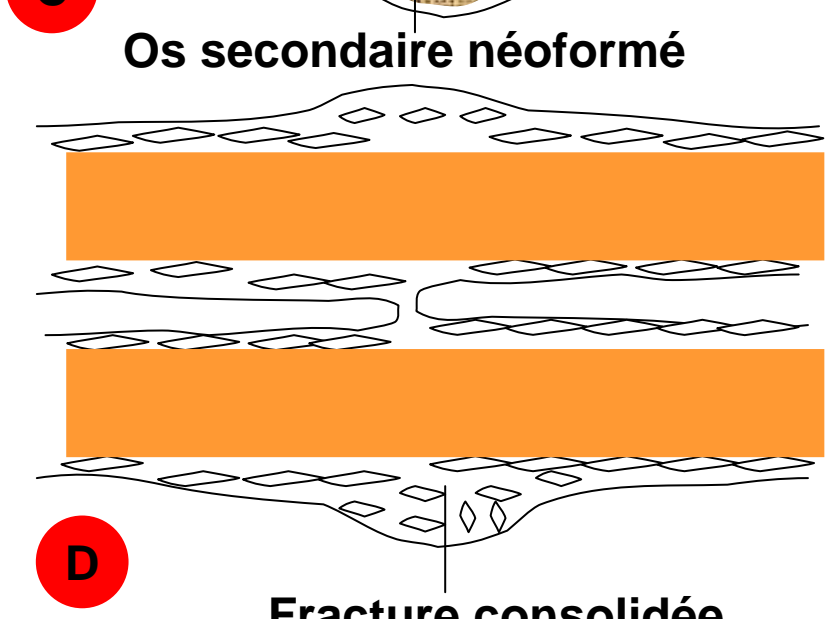
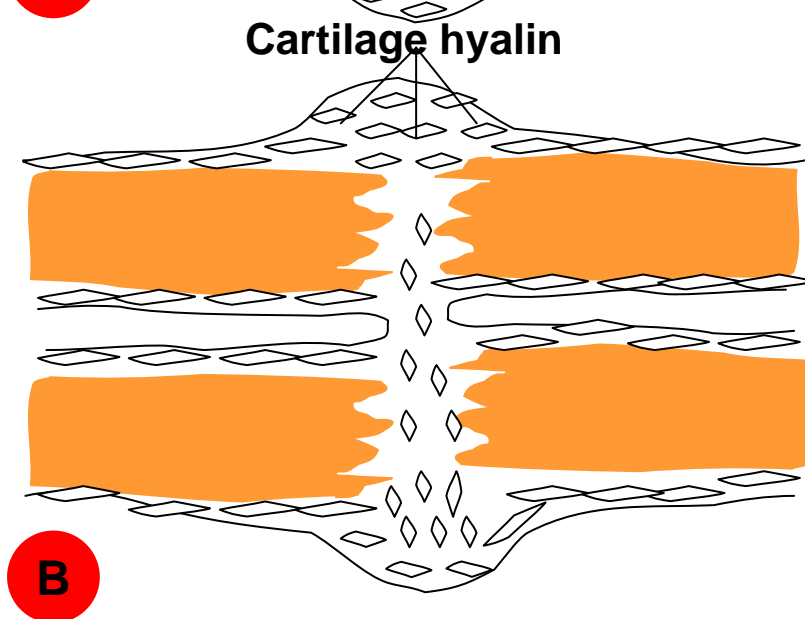
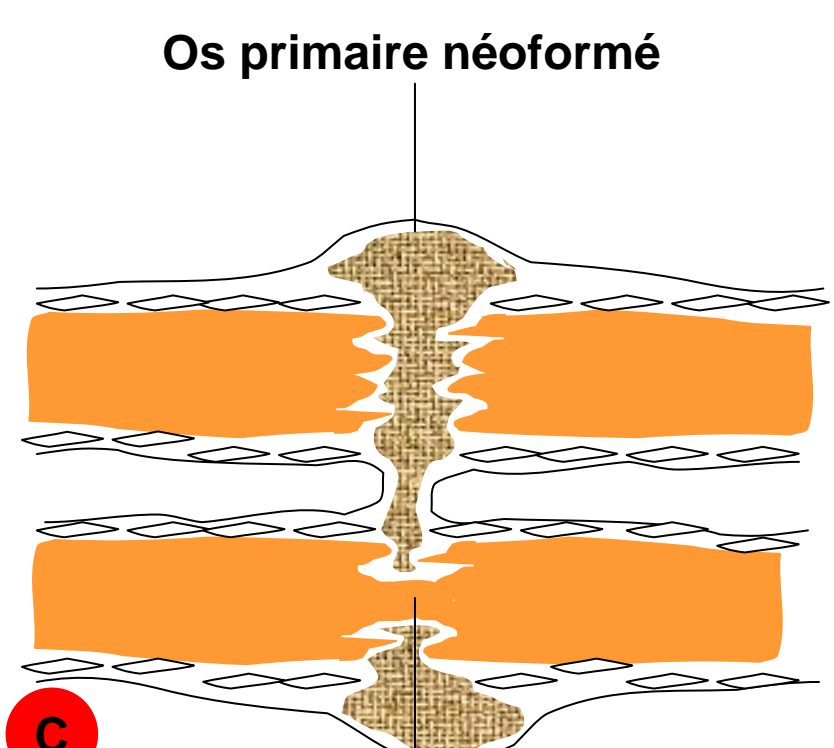
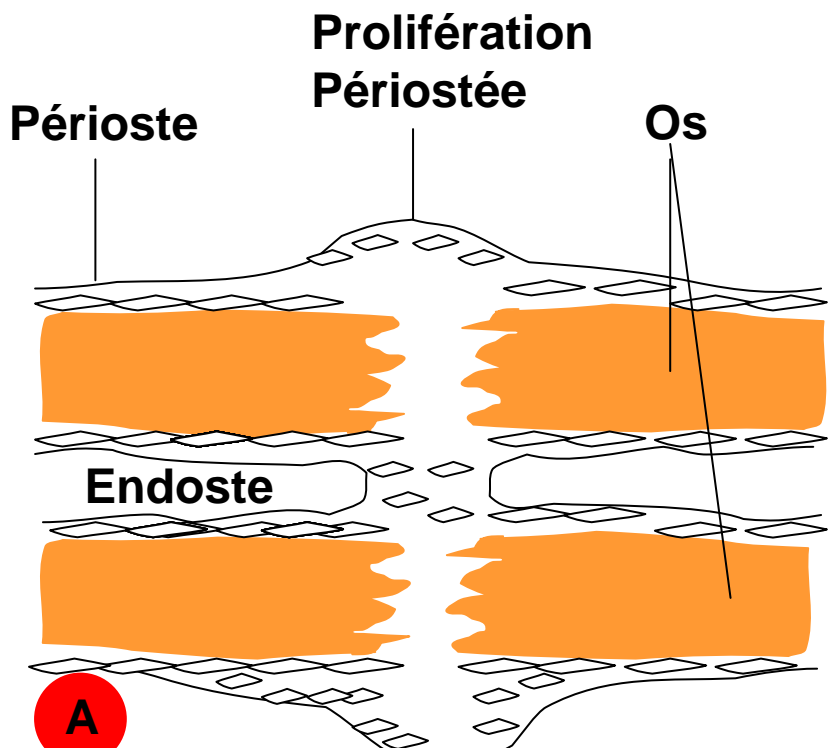


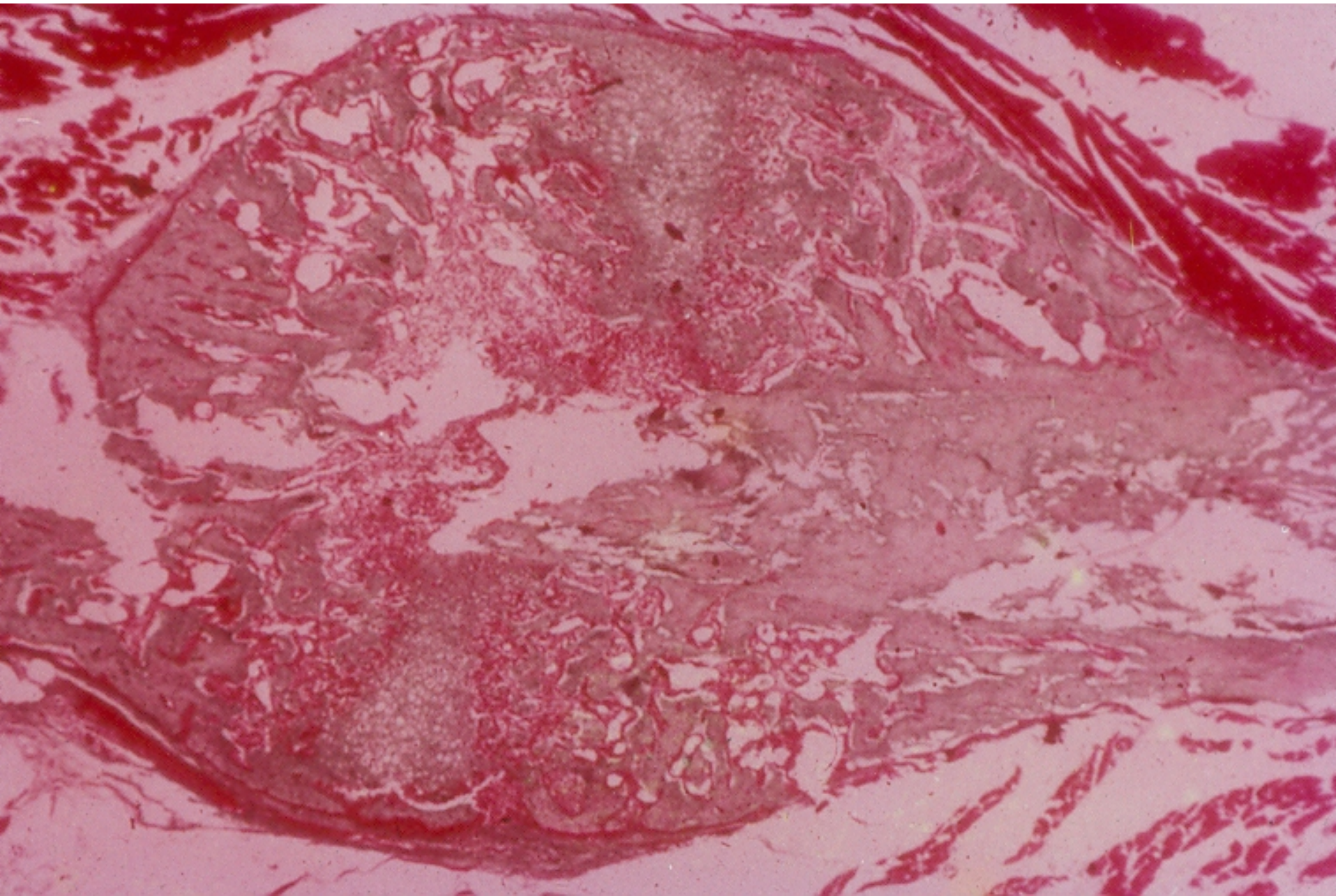


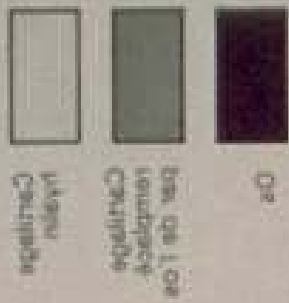
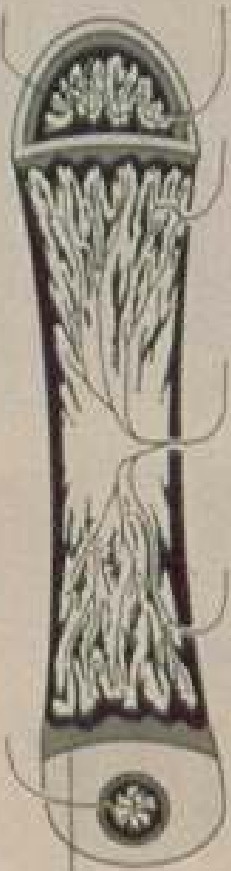
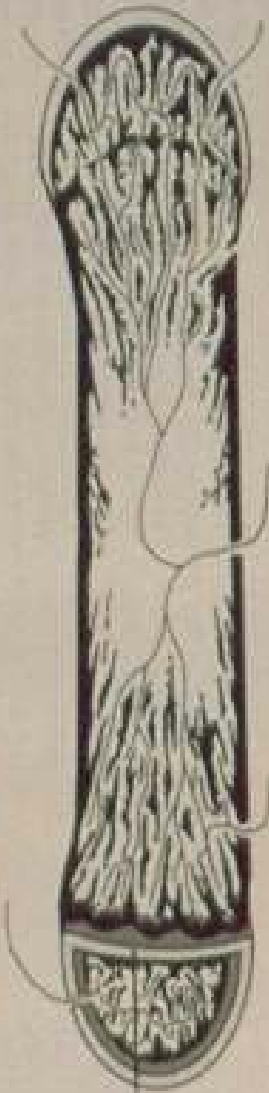
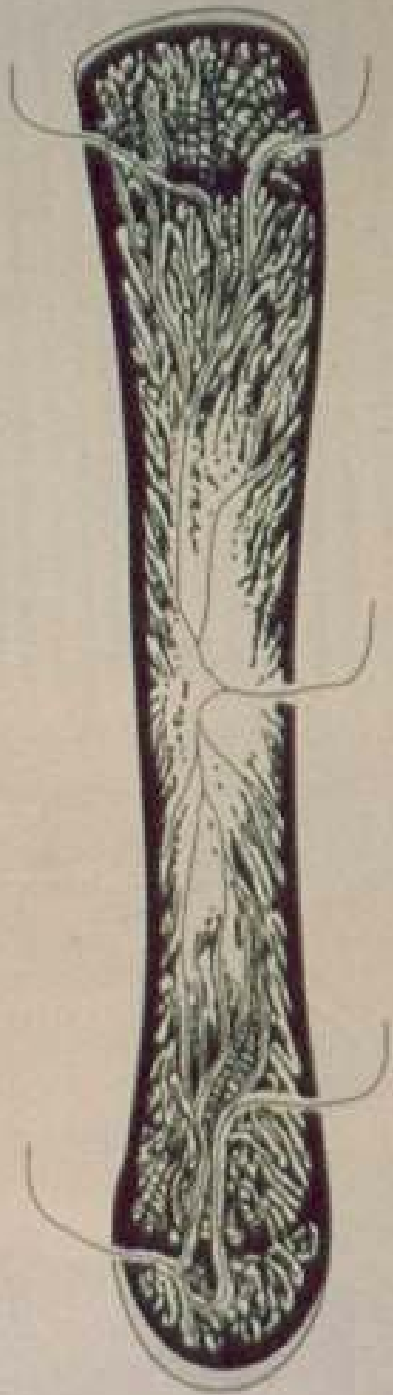












Centre of ossification secondary

Centre of ossification primary

Contribution
Cartilage of