


# SYSTEME ARTICULAIRE

**Dr. A. ABDALLAH**  
**Dr. S. BOUKOFFA**

Laboratoire d'Anatomie Médico-  
Chirurgicale  
Faculté de Médecine – Annaba  
Email: [abourahaf\\_dz@yahoo.fr](mailto:abourahaf_dz@yahoo.fr)

A silhouette of a golfer in mid-swing, captured against a vibrant orange and yellow sunset sky. The golfer is positioned on the left side of the frame, with their club extended upwards and to the left. The background features a dark horizon line with some foliage silhouettes. The text is overlaid on the right side of the image.

***un  
mouvement qui fait  
bouger un  
grand  
nombre  
d'articulati***

# Plan du cours

3

- **Définition.**
- **Classification des articulations.**
- **Cartilage et tissu cartilagineux.**
- **Structures d'adaptation.**
- **Mécanique articulaire.**



# DEFINITIO

# N



# Articulation ou jointure

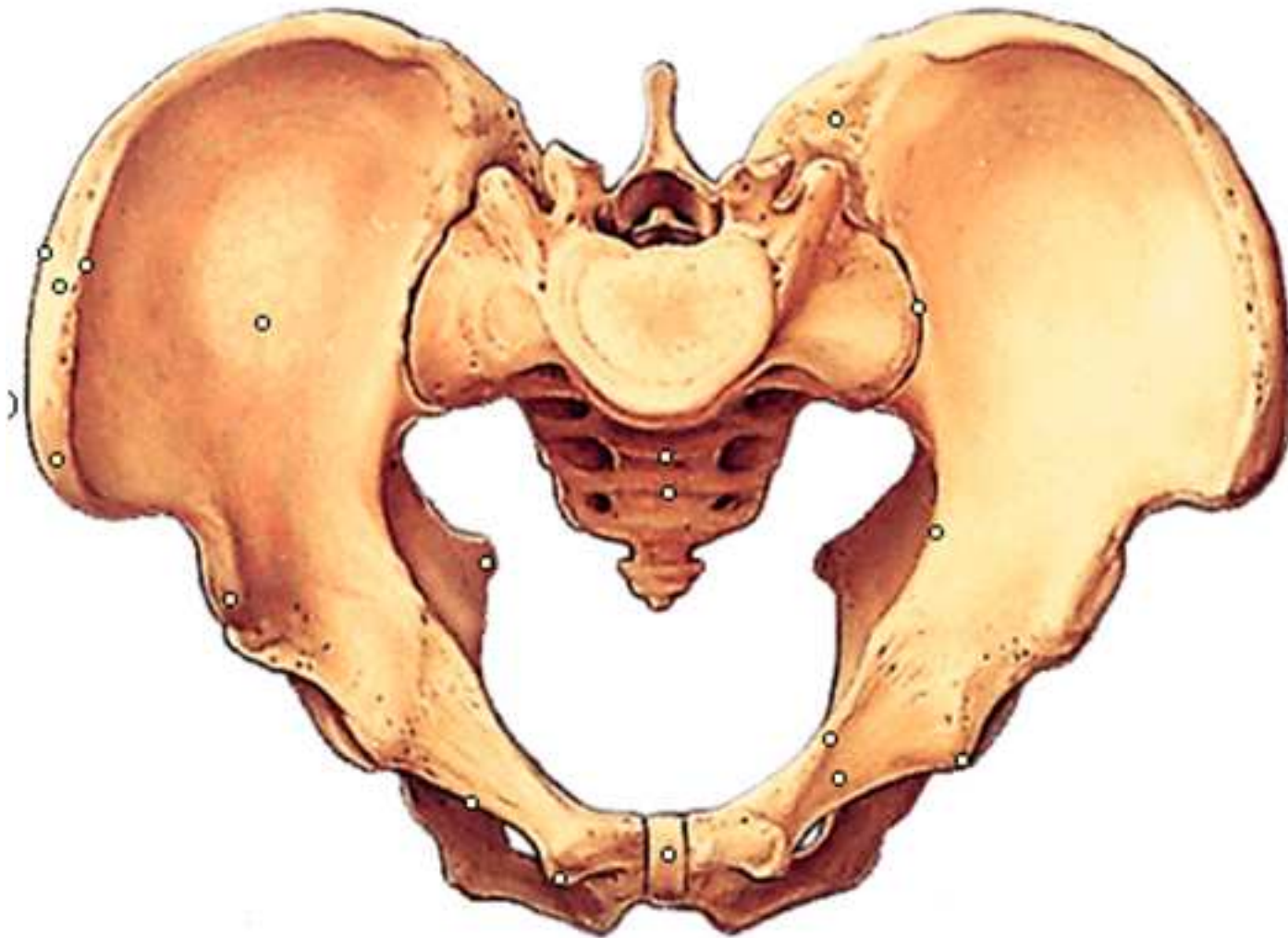
5

- Une articulation est le moyen d'union entre 2 ou plusieurs pièces du squelette.
- Elle joue un rôle important dans le mouvement.
- L'étude des articulations est **l'arthrologie.**



# Articulations de 3 os

6



# Articulations des cartilages

7



# Articulation entre os et cartilage

8





A photograph of a traditional Islamic courtyard. In the foreground, a rectangular pool of water reflects the surrounding architecture. The building features a series of arches supported by columns, with intricate geometric patterns on the walls. A central tower with a tiled roof and arched windows stands prominently. Several tall palm trees are visible in the background under a clear sky.

# Classification des articulations

# Classification des articulations

10

- **Articulations immobiles** (jointures fibreuses ou sutures) : **Synarthroses.**
- **Articulations semi-mobiles** (jointures cartilagineuses) : **Amphiarthroses**
- **Articulation mobiles** (jointures synoviales) : **Diarthroses.**



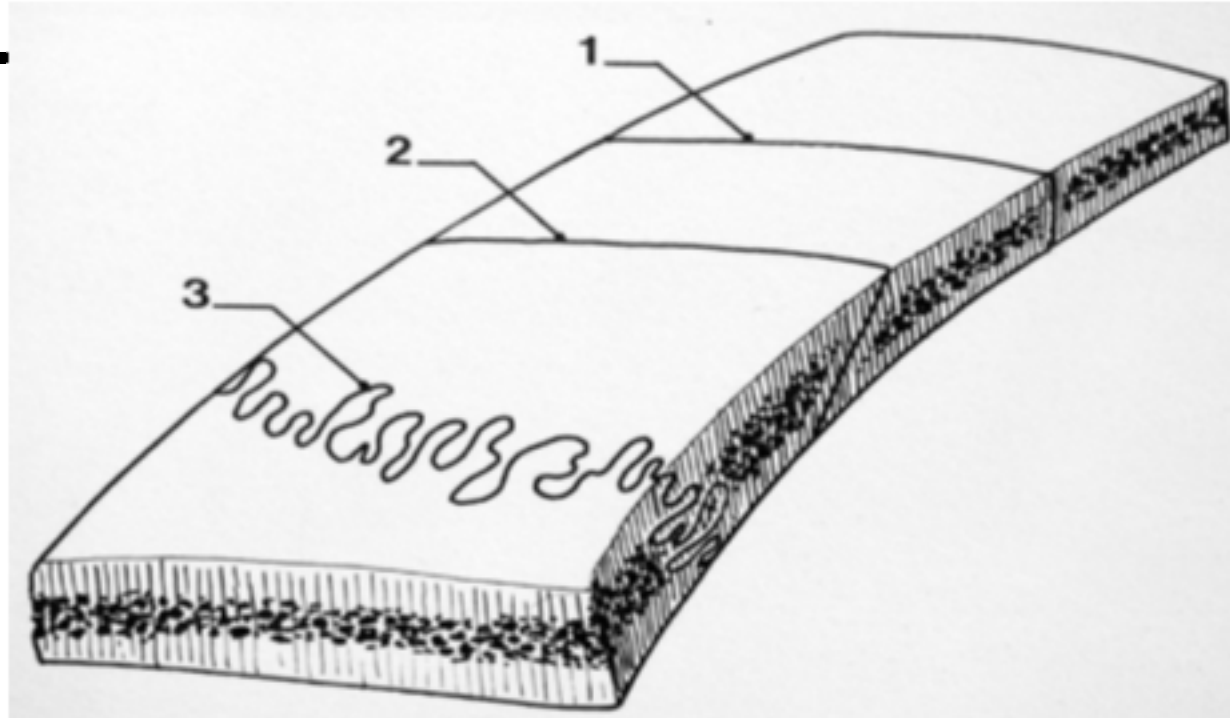
# Classification des articulations

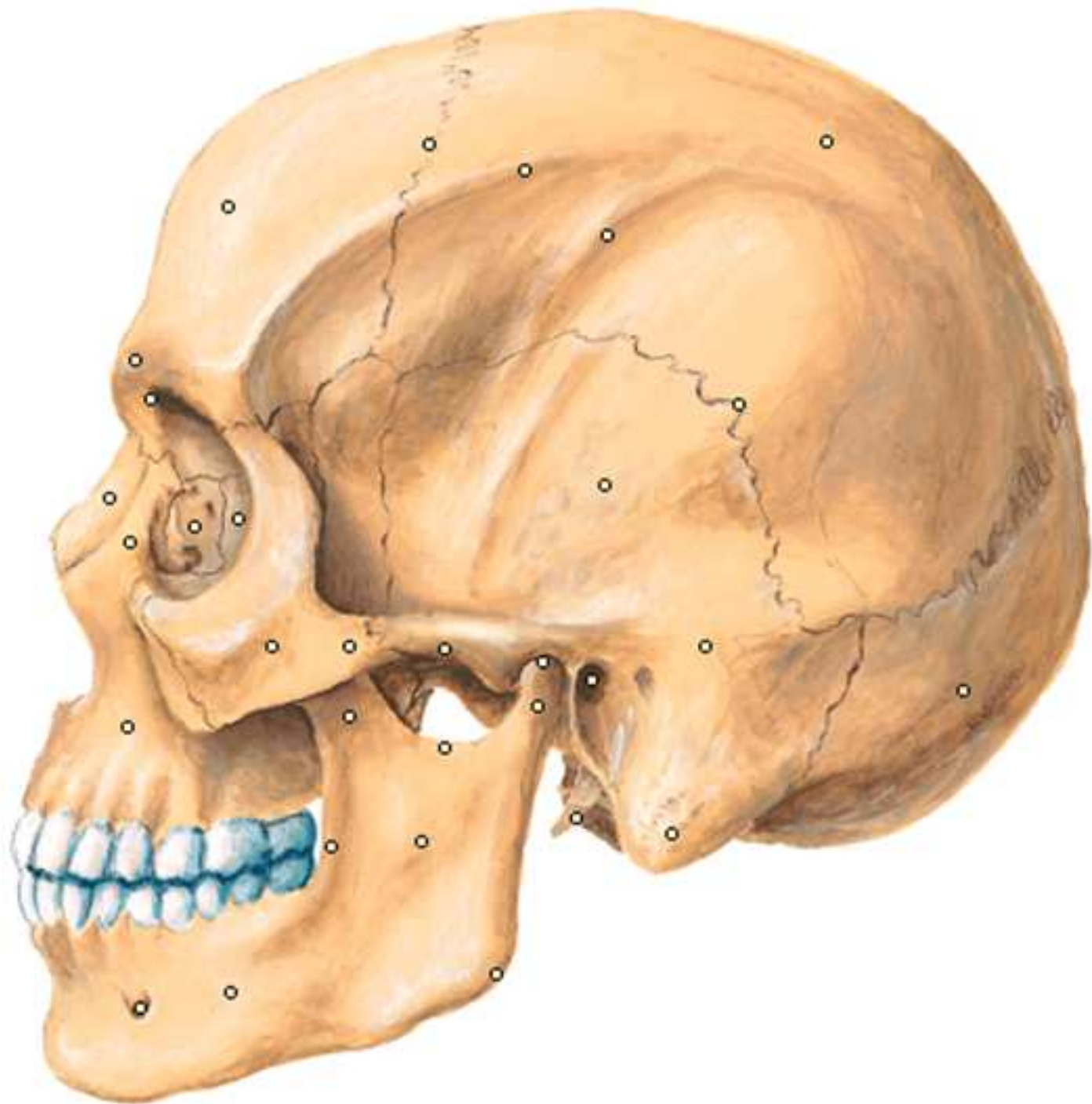
## Synarthroses

# Synarthroses

12

- Les pièces osseuses sont réunies par **un tissu fibreux**.
- **Exp:** sutures du crâne et de la face.







# Classification des articulations

## Amphiarthrose

### S

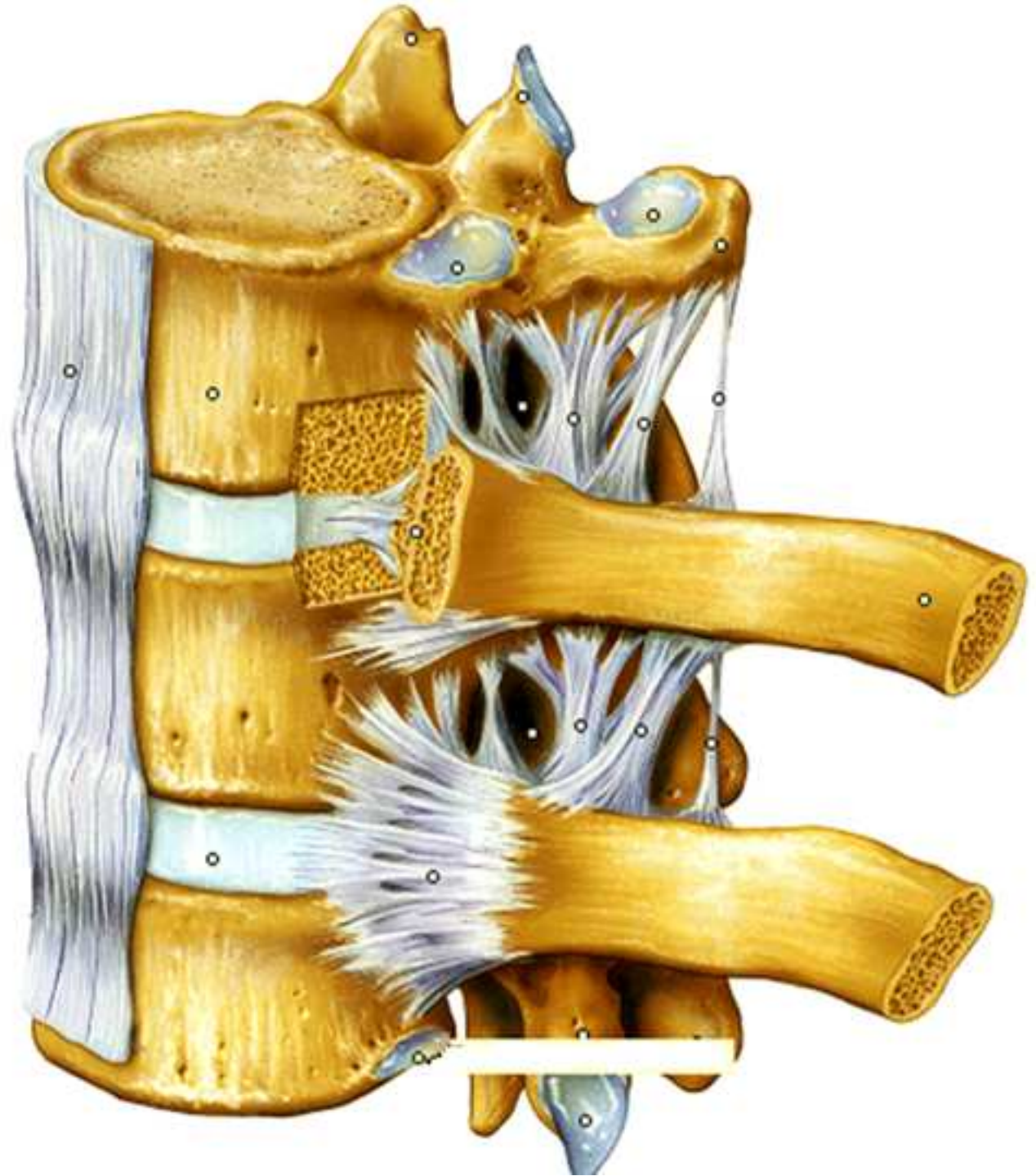
# Amphiarthroses

15

- Les os sont réunis par un **bloc de tissu fibro-cartilagineux**.
- Elles sont généralement médianes.
- **Exp:** symphyse pubienne, articulations intervertébrales.

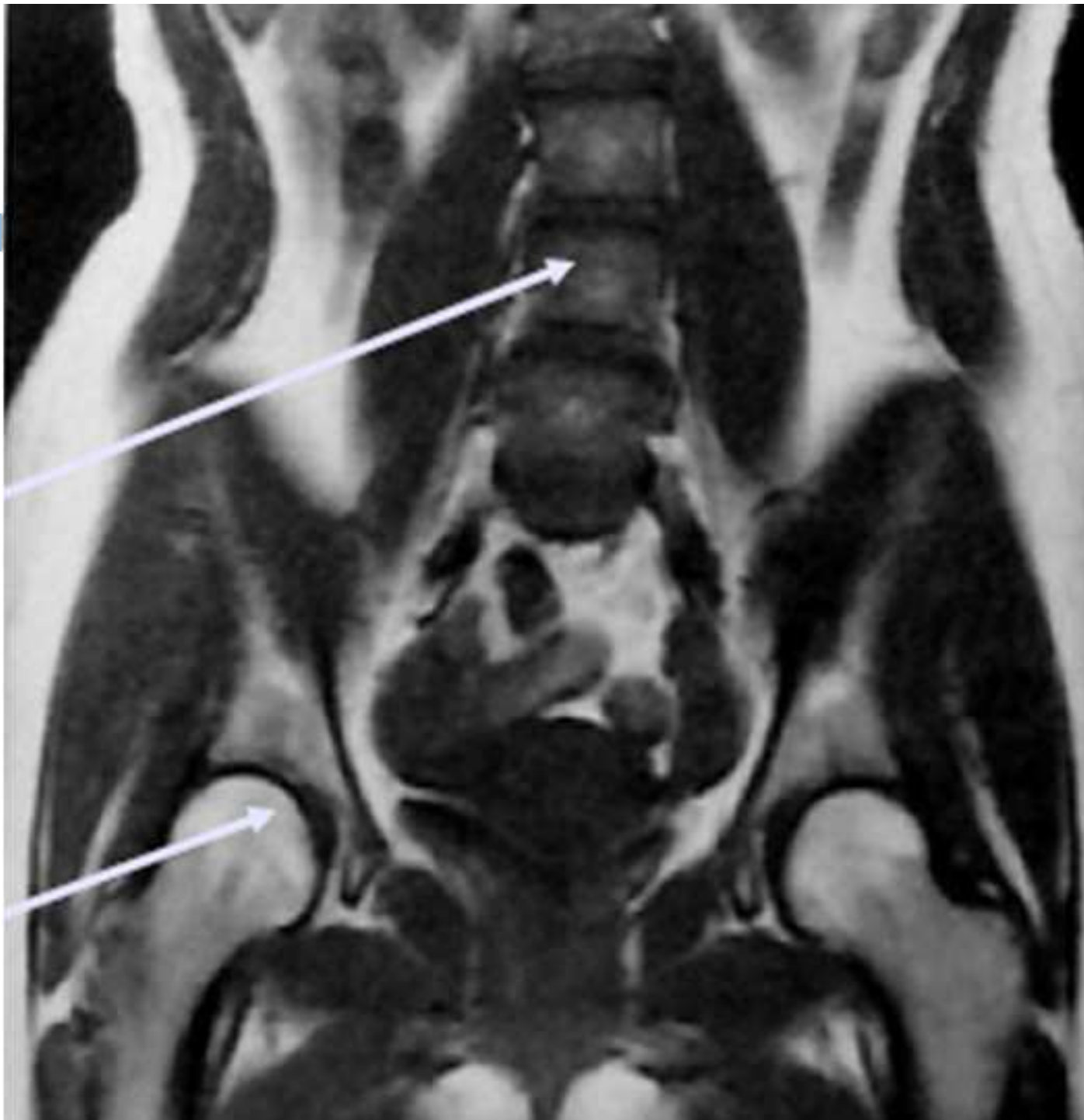


# Disques inter- vertébrau x



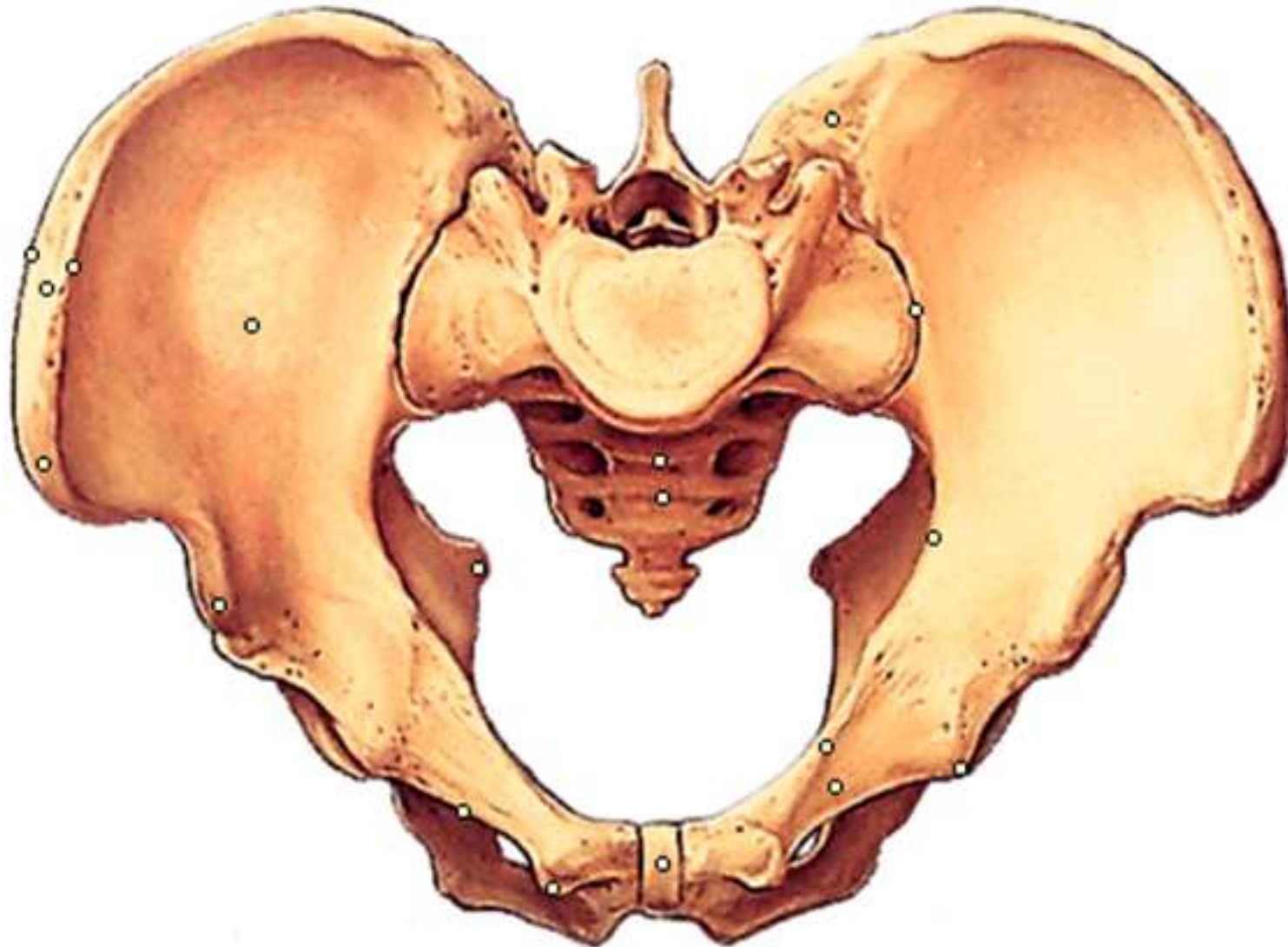


# IRM



# Symphyse pubienne

18





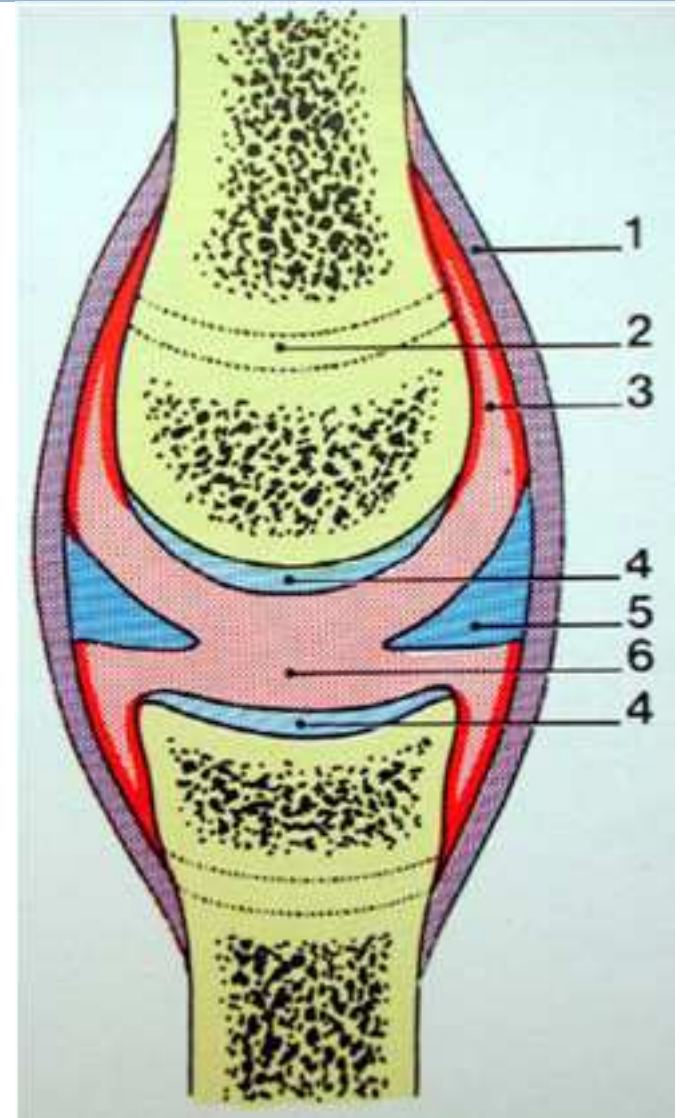
# Classification des articulations

## Diarthroses

# Caractéristiques (1)

20

- **Mobilité** importante.
- **Surfaces articulaires:**
  - / Épiphysaires.
  - / Géométriques.
  - / Cartilagineuses et lisses.
  - / Adaptées en cas de discordance.
- **Cavité articulaire** : sépare les surfaces articulaires.

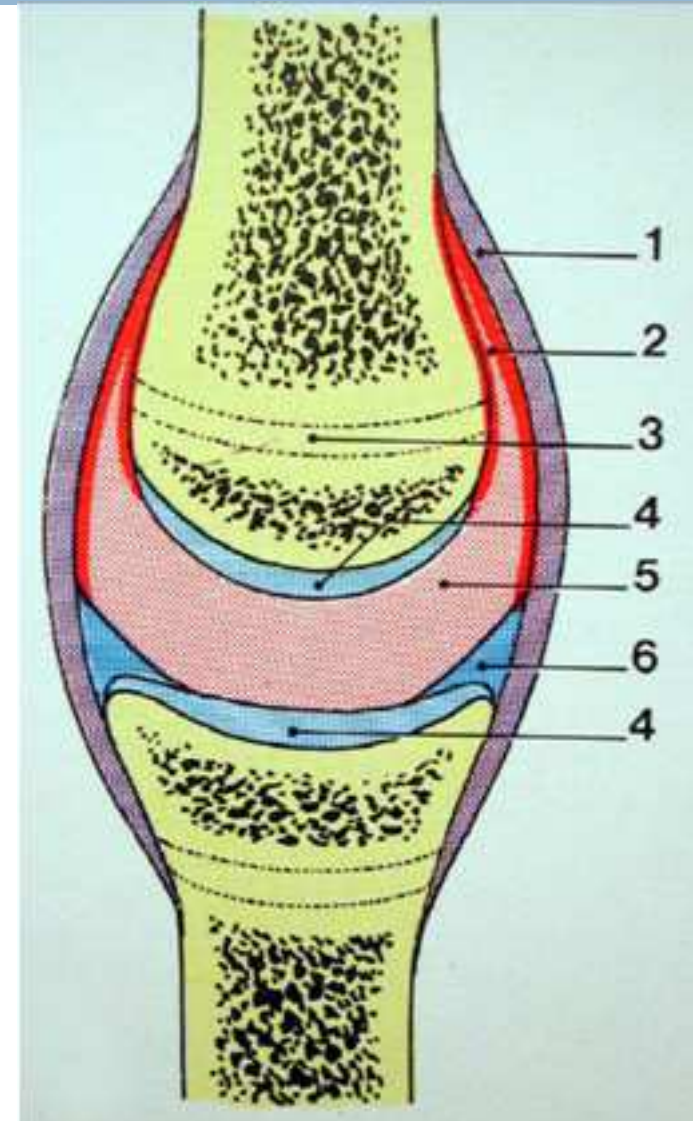


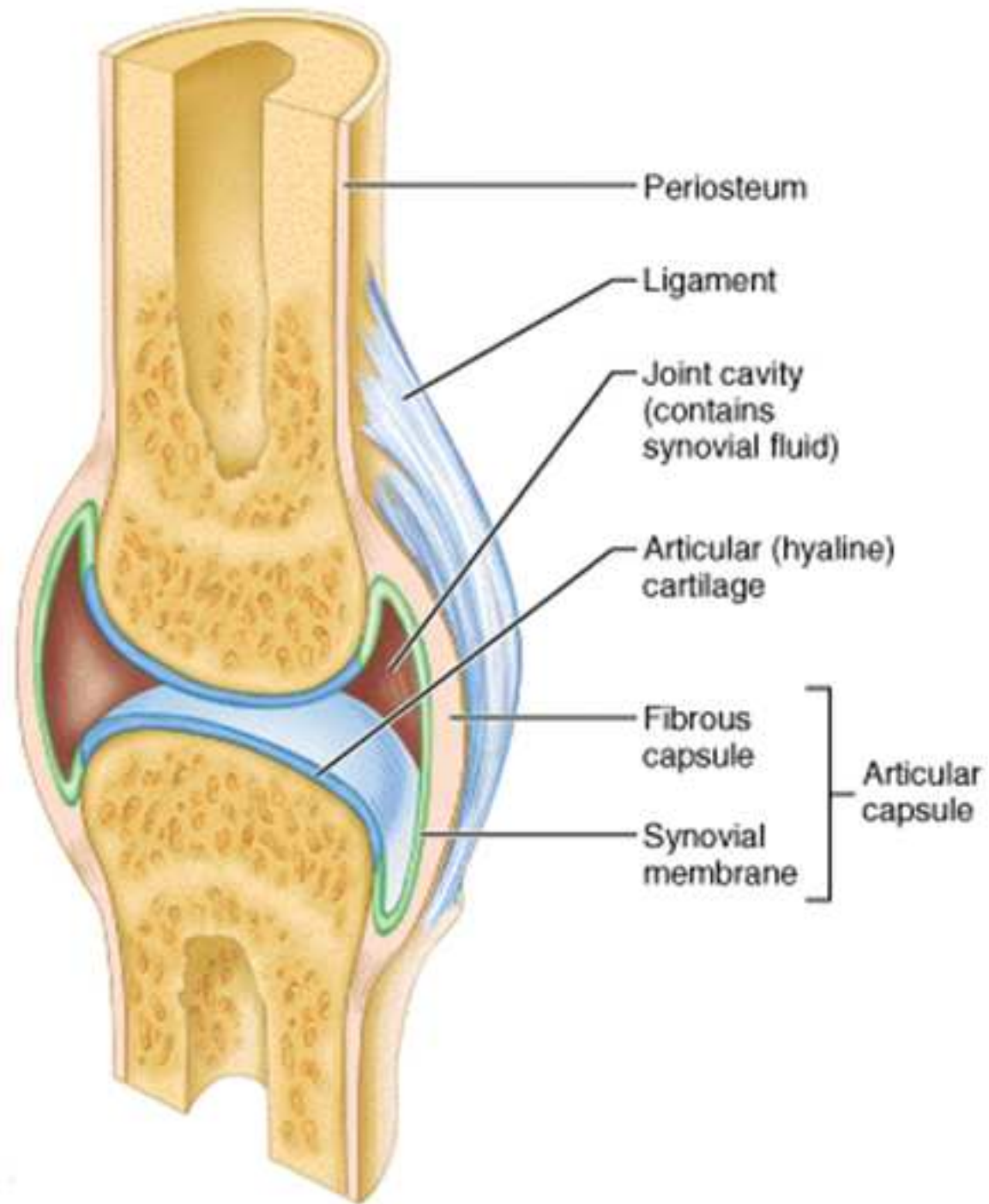
# Caractéristiques (2)

21

- **Moyens d'union :**
  - ✓ Entourent les surfaces articulaires,
  - ✓ Représentés par un manchon fibreux, **la capsule articulaire** renforcée par **les ligaments**.
- **Synoviale :** membrane tapissant la face profonde de la capsule jusqu'au pourtour du cartilage.

Elle sécrète **la synovie** à triple rôle (nutrition, lubrification et résorption des déchets)







# Surfaces articulaires (fémur)

24

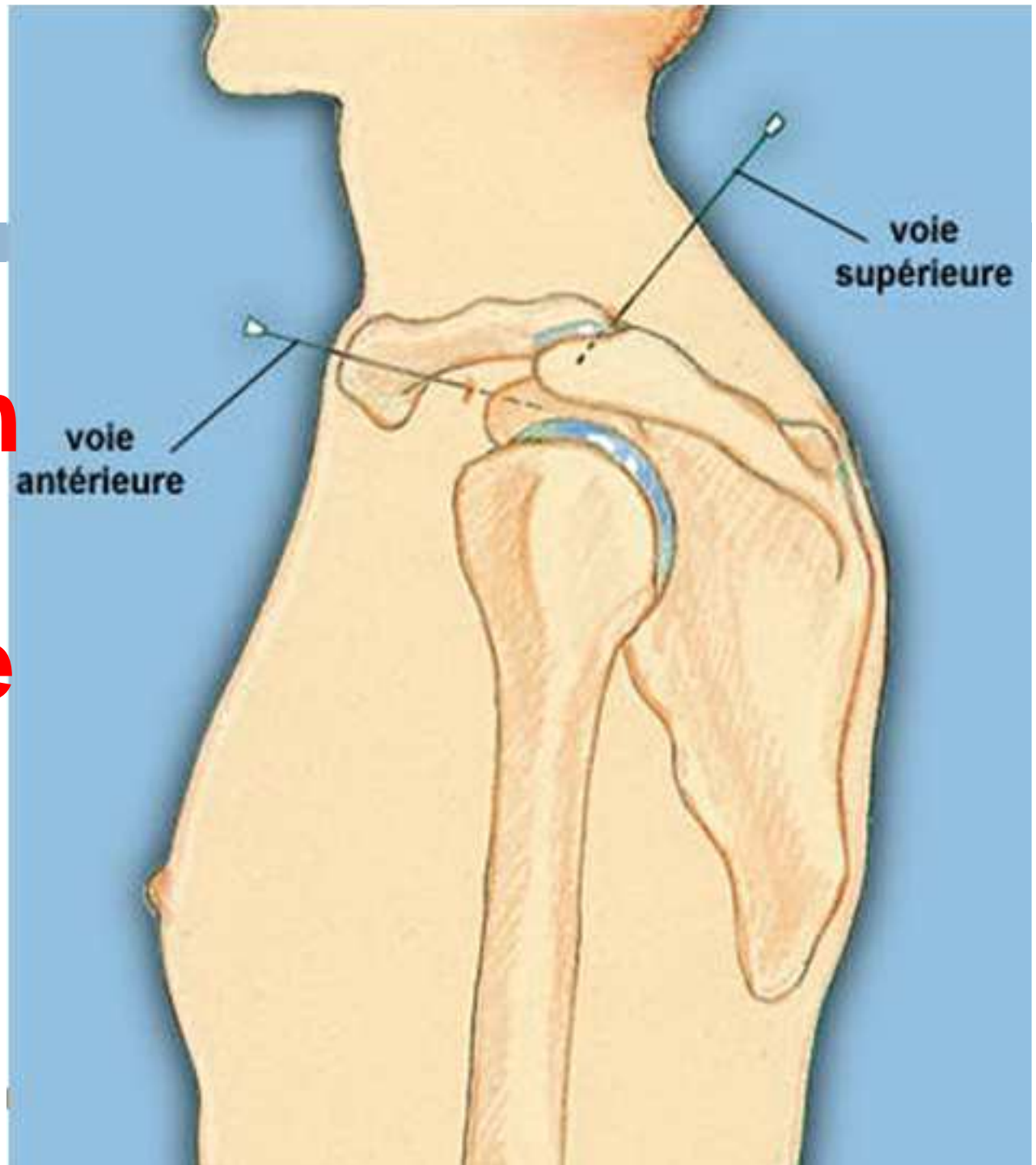




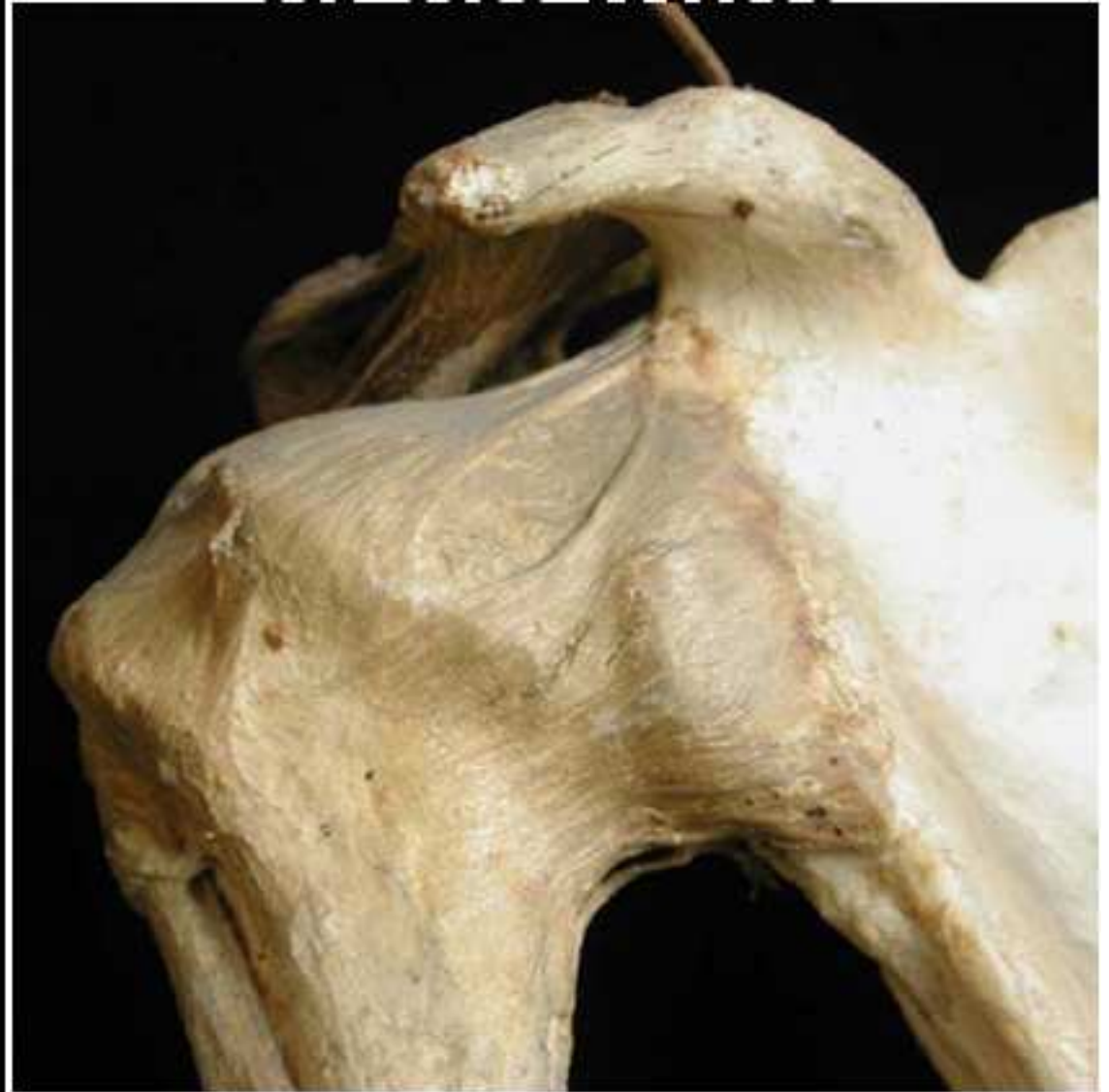
# Cavité articulaire (genou)



# Infiltration intra- articulaire

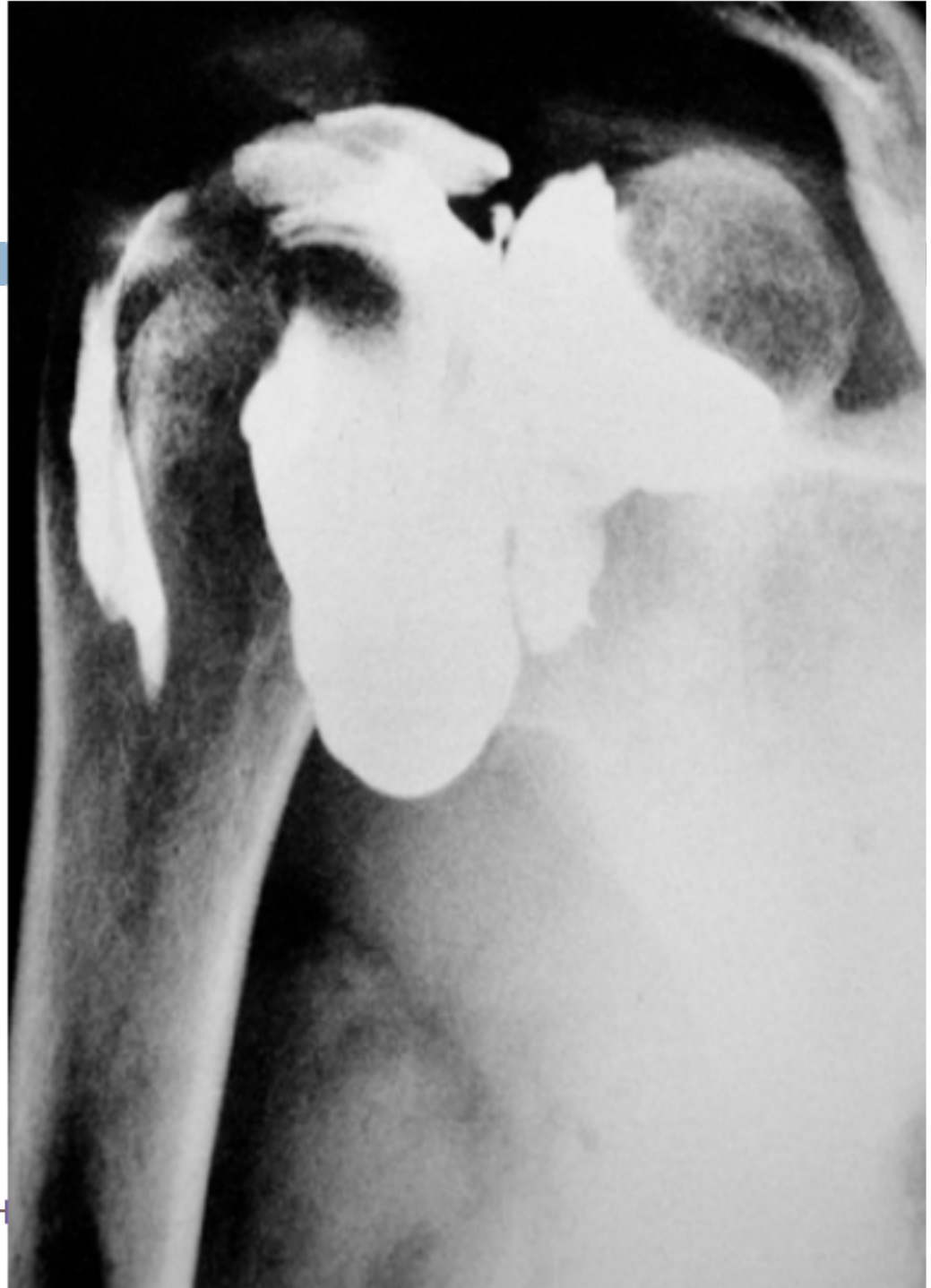


# Capsule et ligaments (coude et épaule)



# Synoviale (arthrographie de l'épaule)

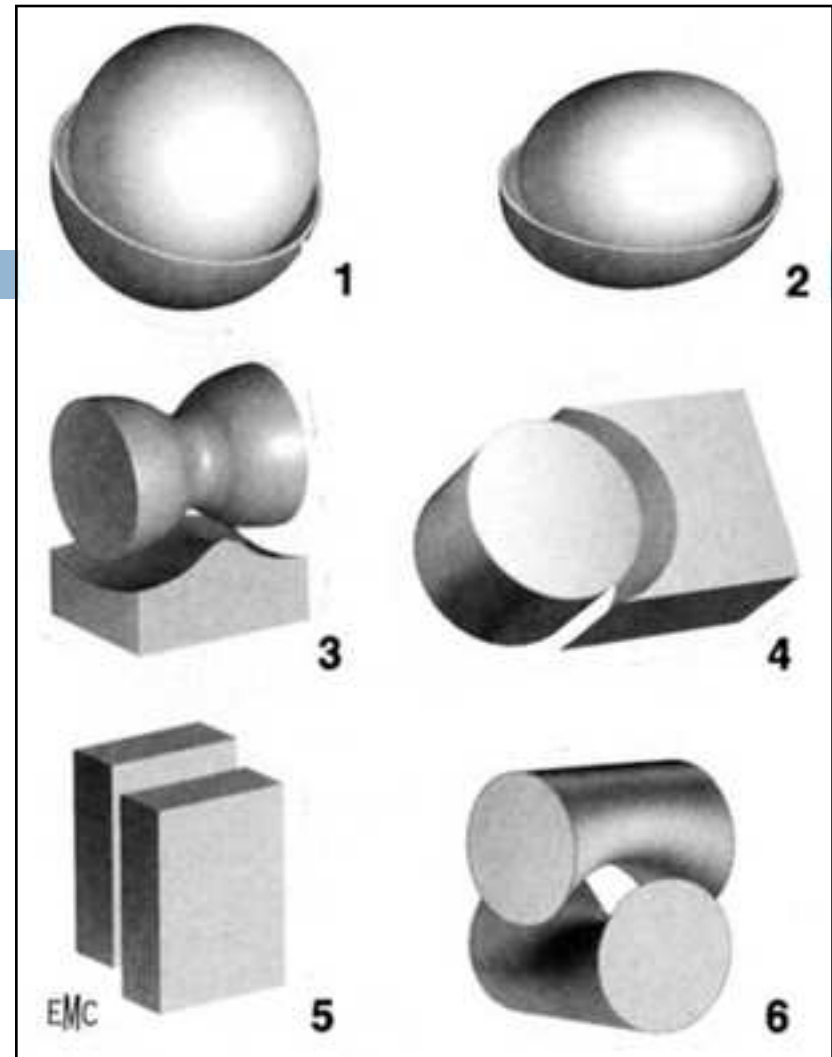
Dr. BOUKOFFA-Dr. ABDALLAH



# Classification

29

- **Articulation sphéroïde (énarthrose).**
- **Articulation ellipsoïde (condylienne).**
- **Articulation ginglyme (trochléenne).**
- **Articulation cylindrique (trochoïde).**
- **Articulation plane (arthrodie).**
- **Articulation en selle (emboîtement réciproque).**



**11** Principaux types d'articulations mobiles.

1. Énarthrose.

2. Condylienne.

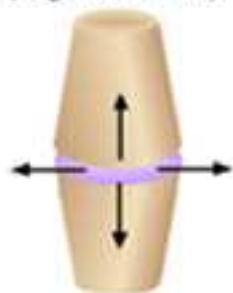
3. Trochléenne.

4. Trochoïde.

5. Arthrodie.

6. Emboîtement réciproque.

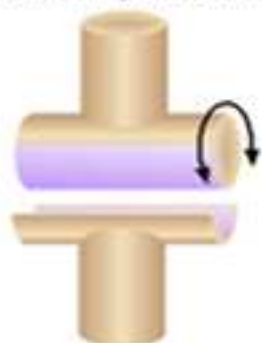
Articulation plane  
(à glissement)



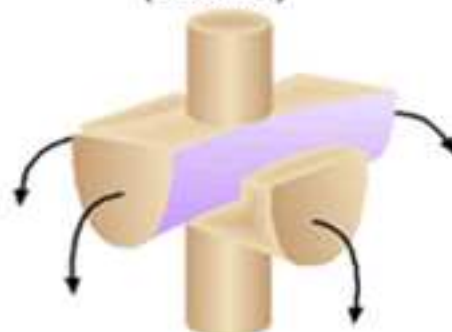
Articulation ellipsoïde  
(biaxiale)



Articulation à charnière  
(trochléenne, uniaxiale)



Articulation en selle  
(biaxiale)



Articulation à pivot  
(trochoïde, uniaxiale)

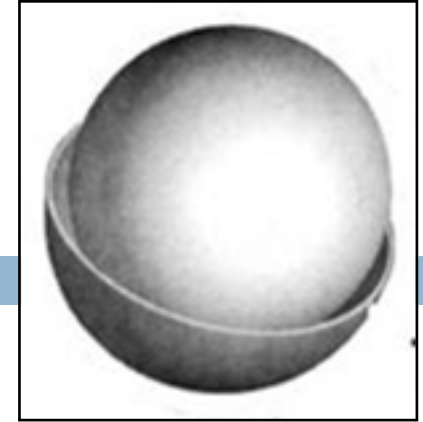


Articulation sphéroïde  
(multiaxiale)

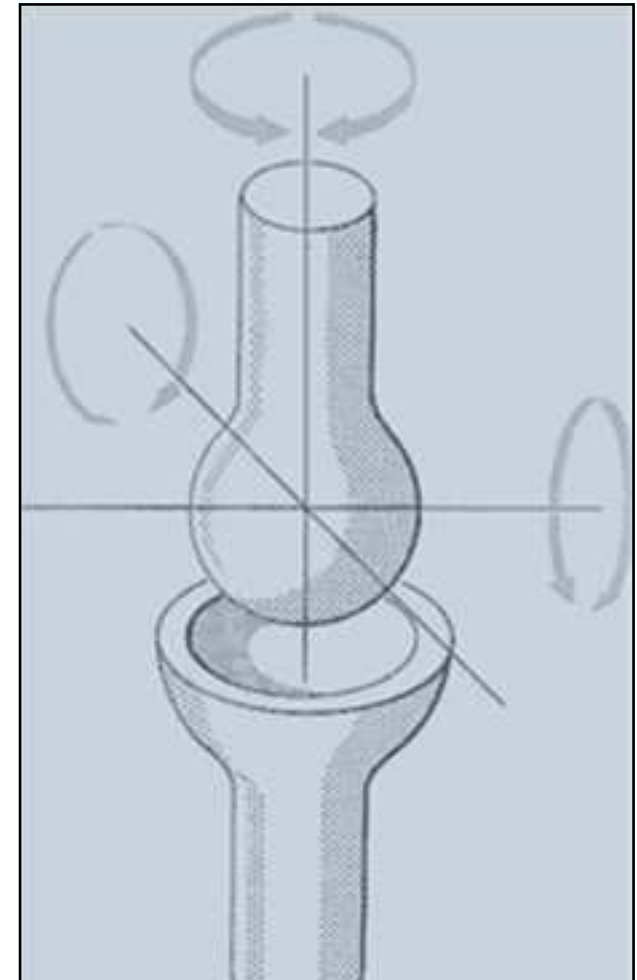


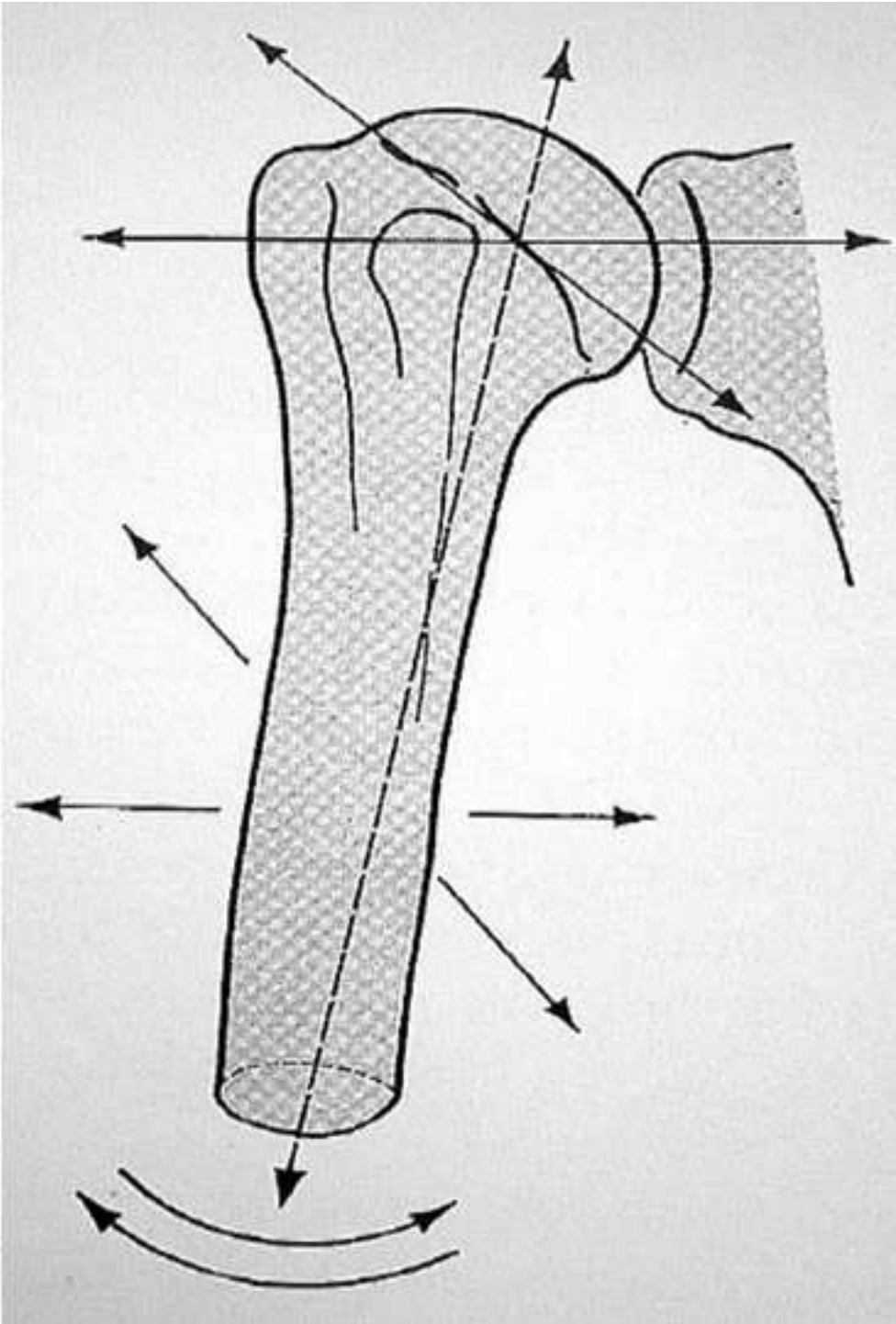
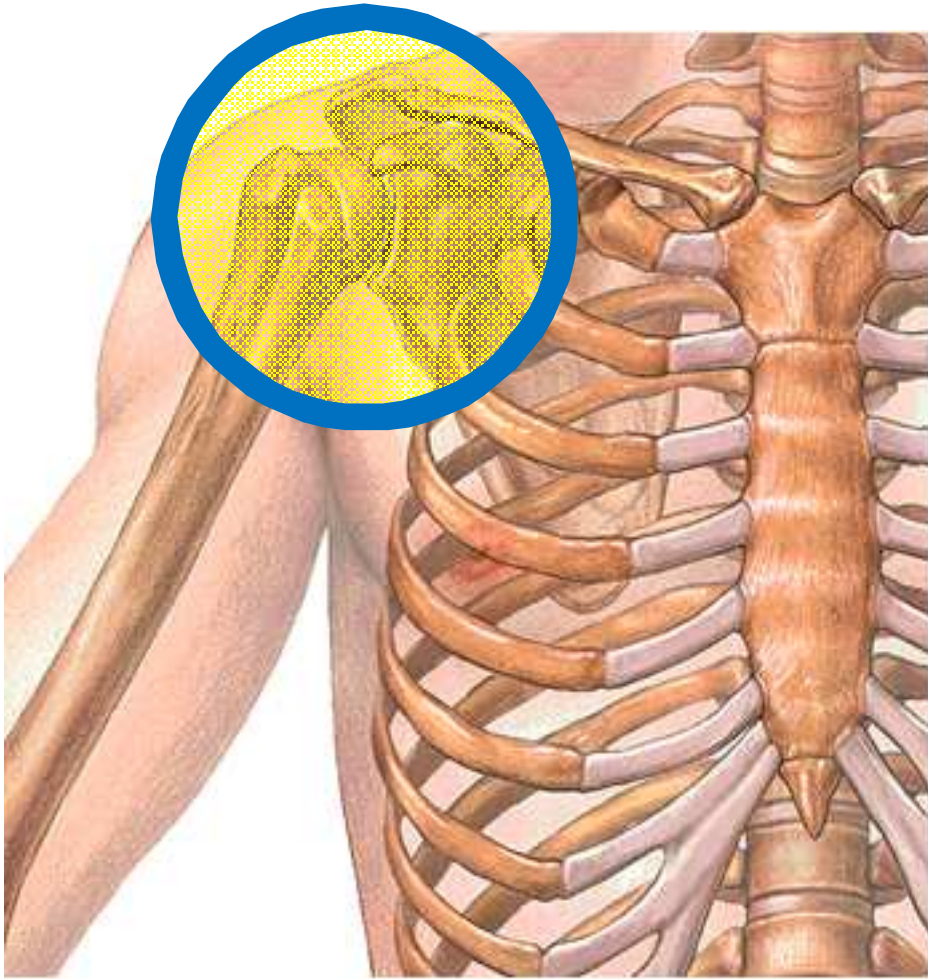
# Articulation sphéroïde

31

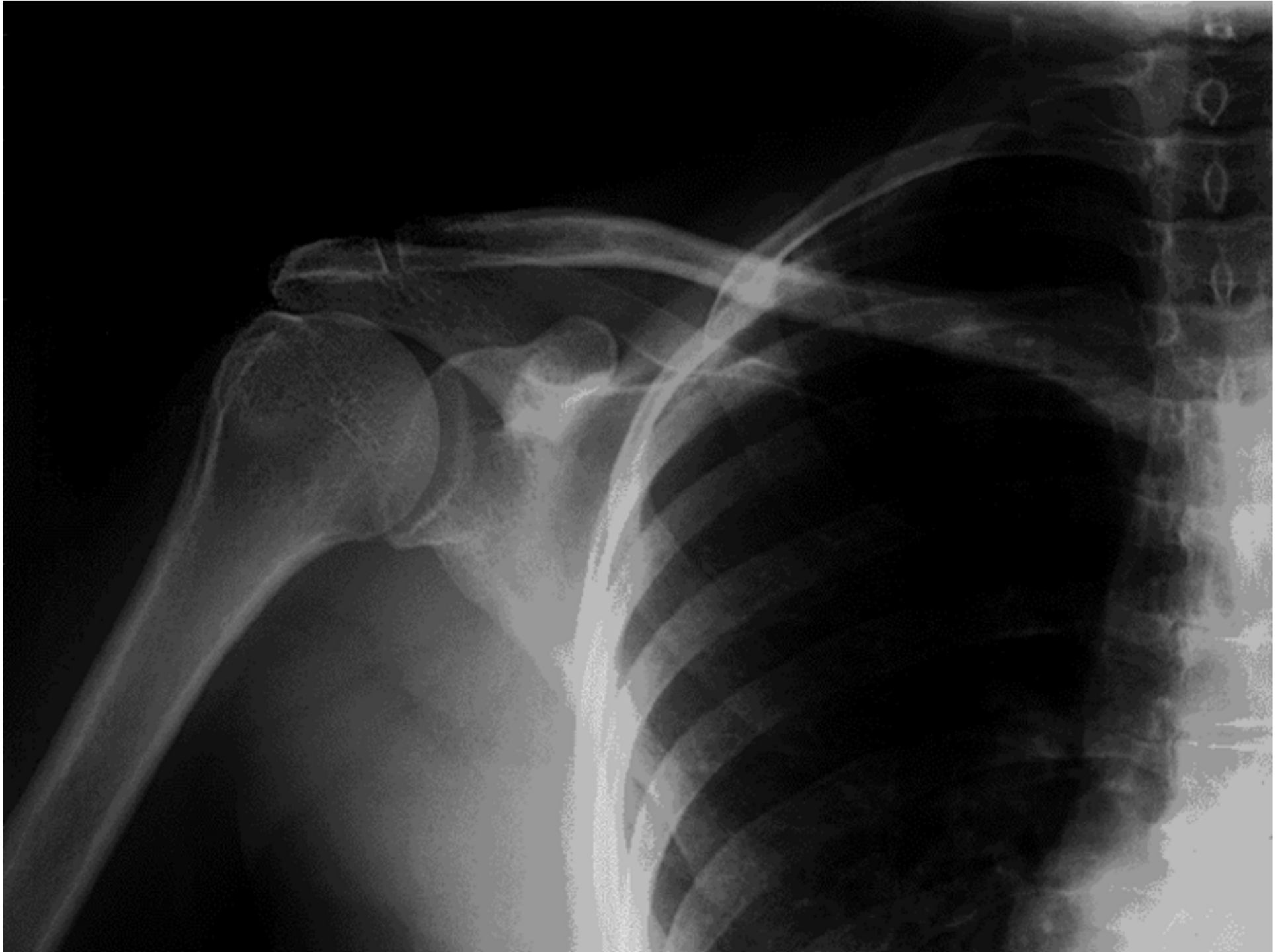


- Les surfaces articulaires sont **des segments de sphère**, plein et creux.
- Très mobile, à 3 axes de mobilité.
- **Exp** : articulation scapulo-humérale.





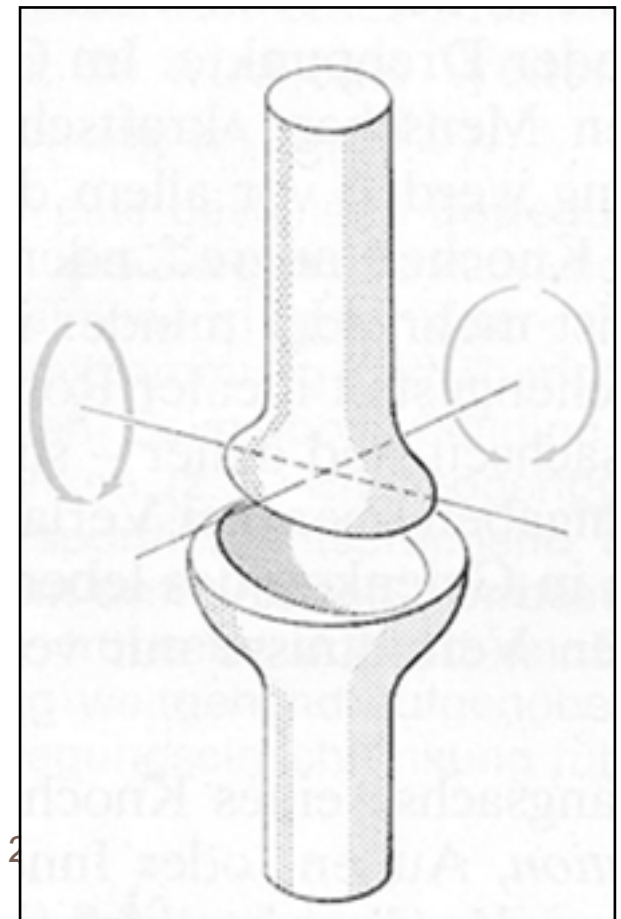
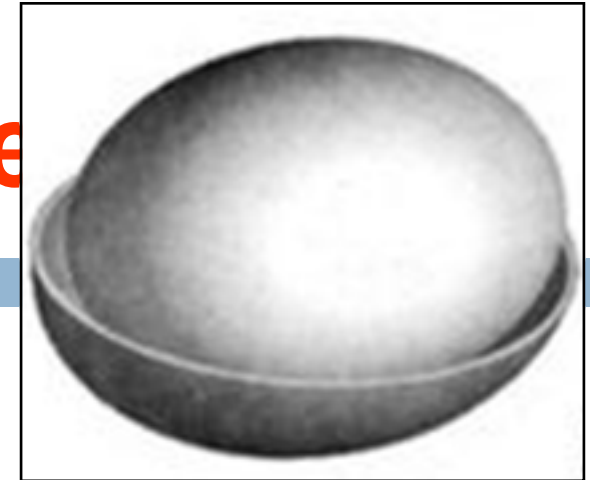


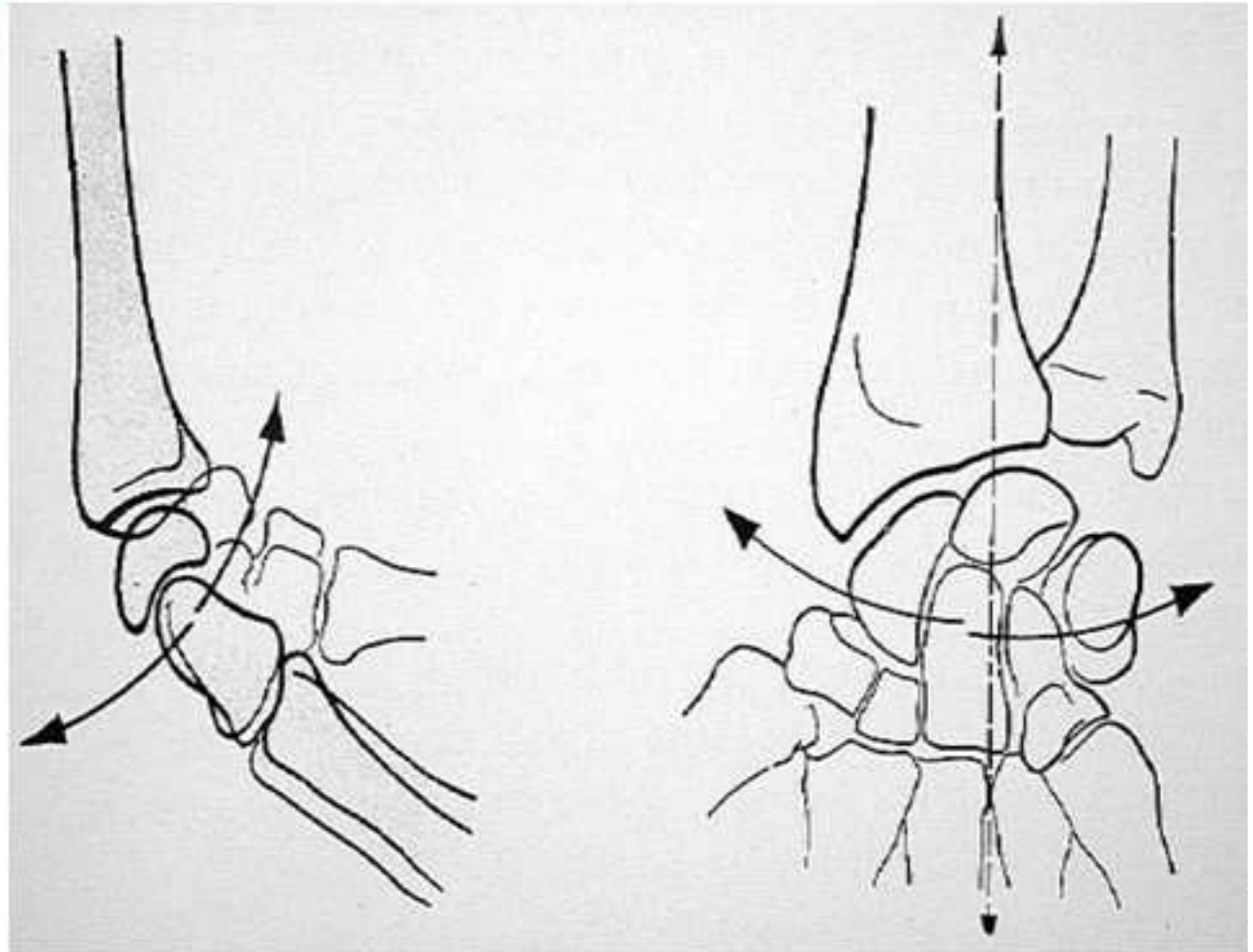
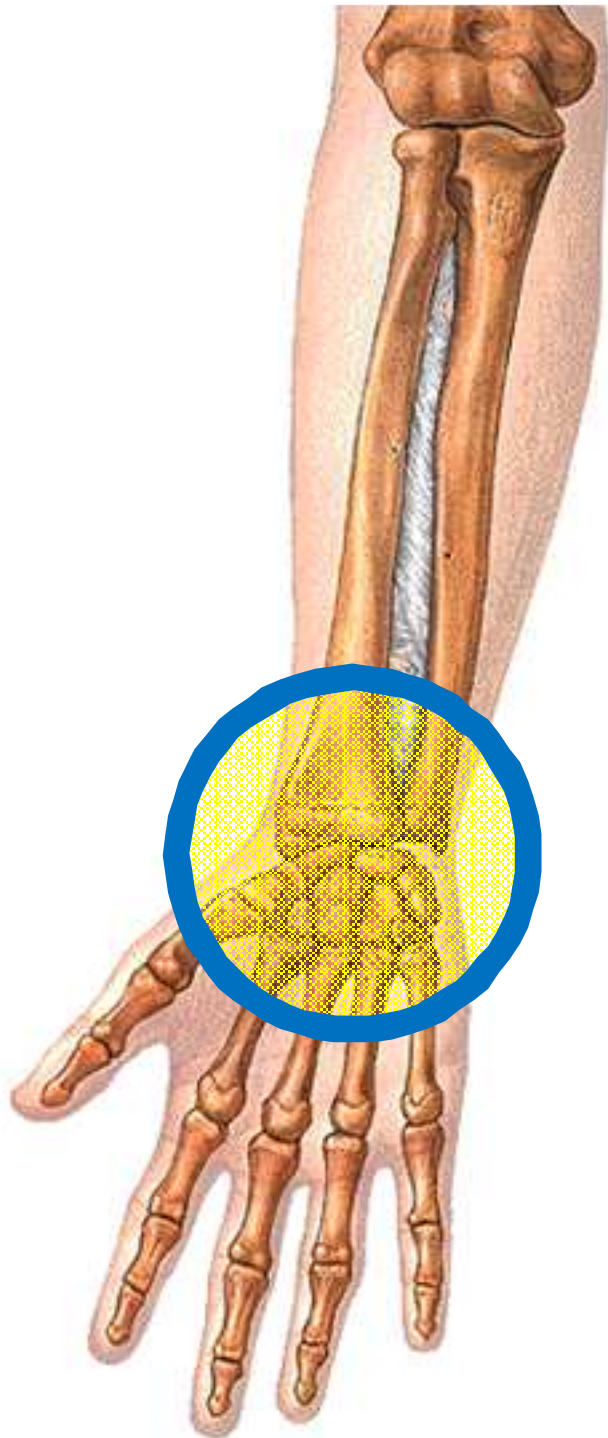


# Articulation ellipsoïde

34

- Les surfaces articulaires sont **des segments d'ellipsoïde**, concave et convexe.
- 2 axes de mobilité.
- **Exp:** articulation radio-carpienne.

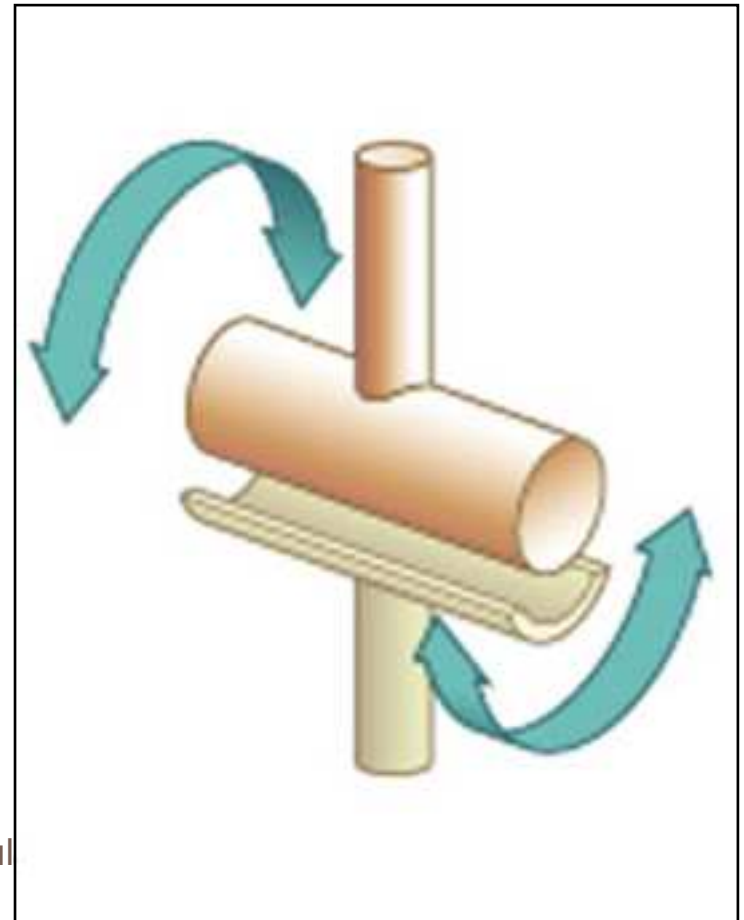
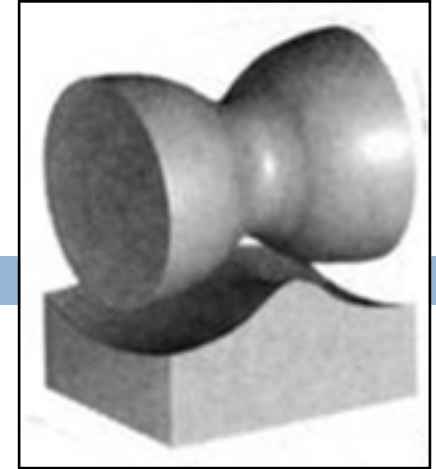




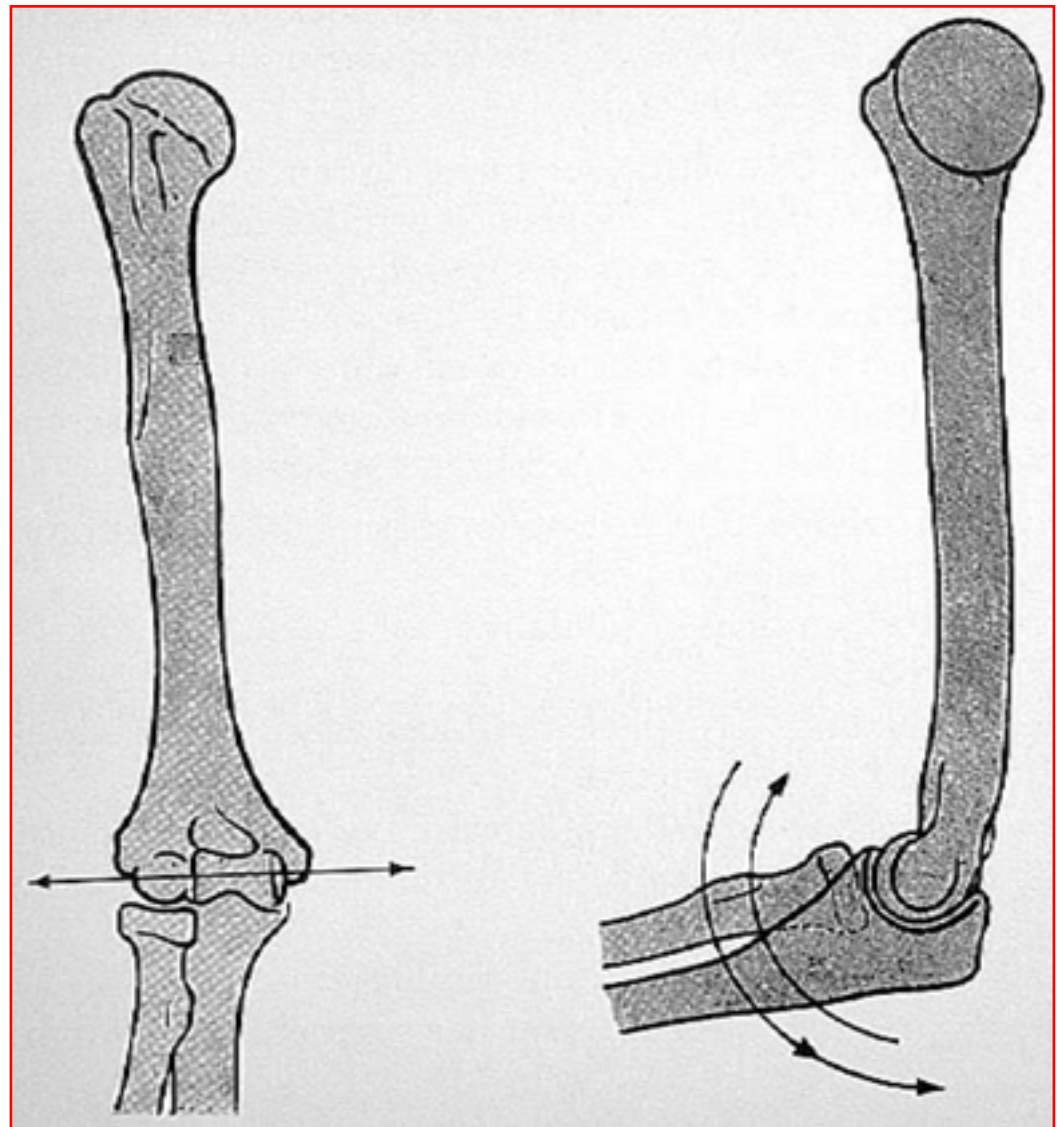
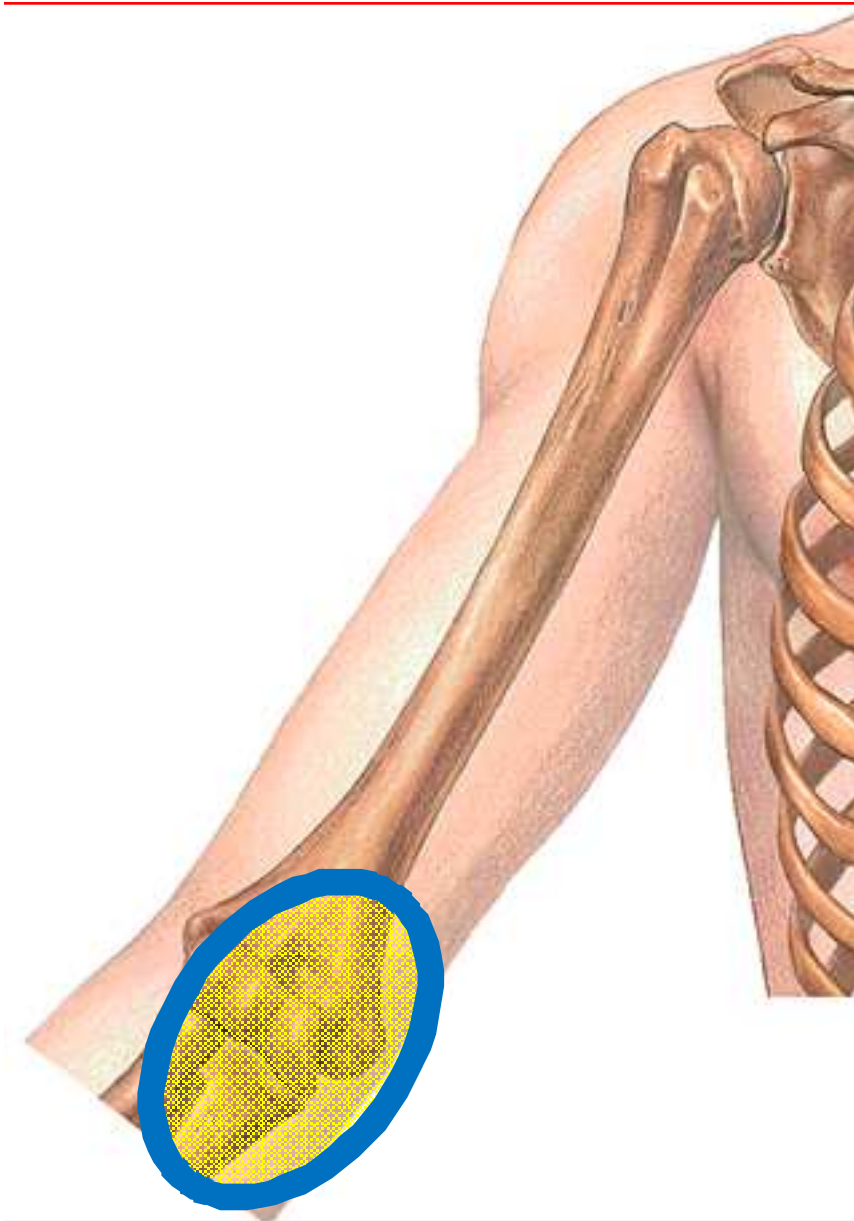
# Articulation ginglyme

36

- Surface articulaire en forme de **poulie**.
- Un seul axe de mobilité.
- **Exp** : articulation huméro-cubitale.



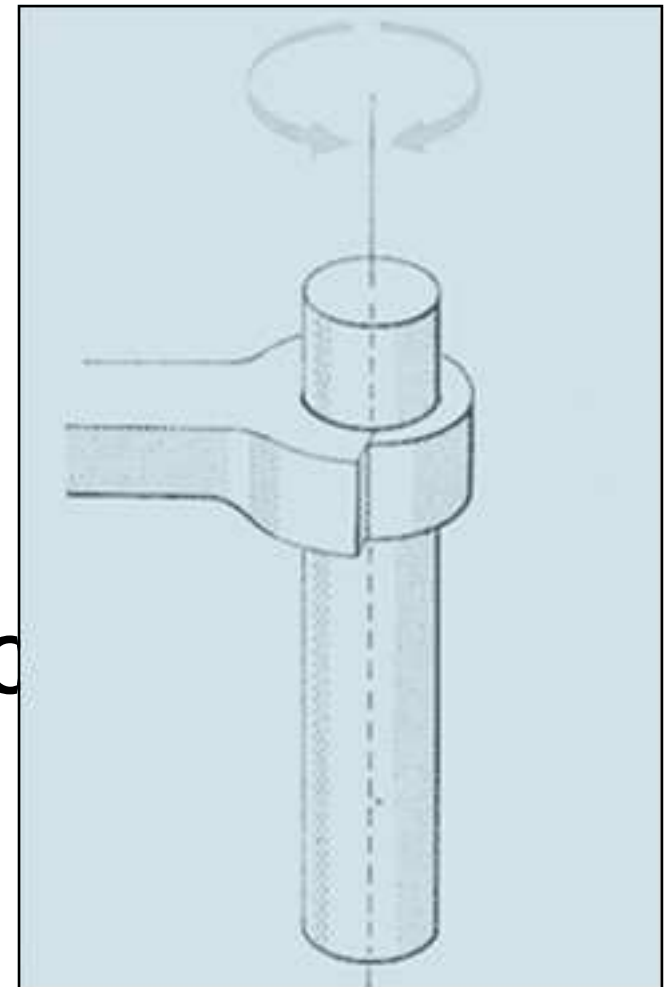
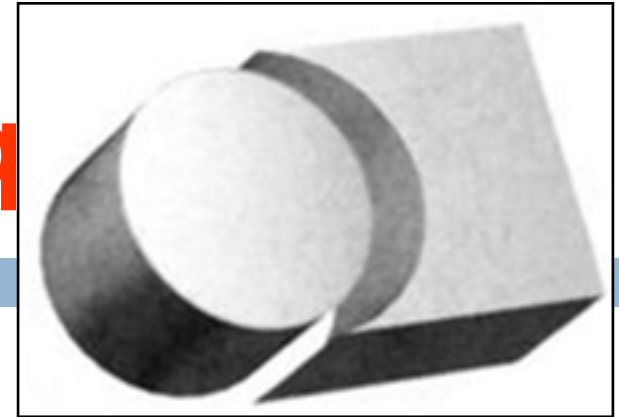


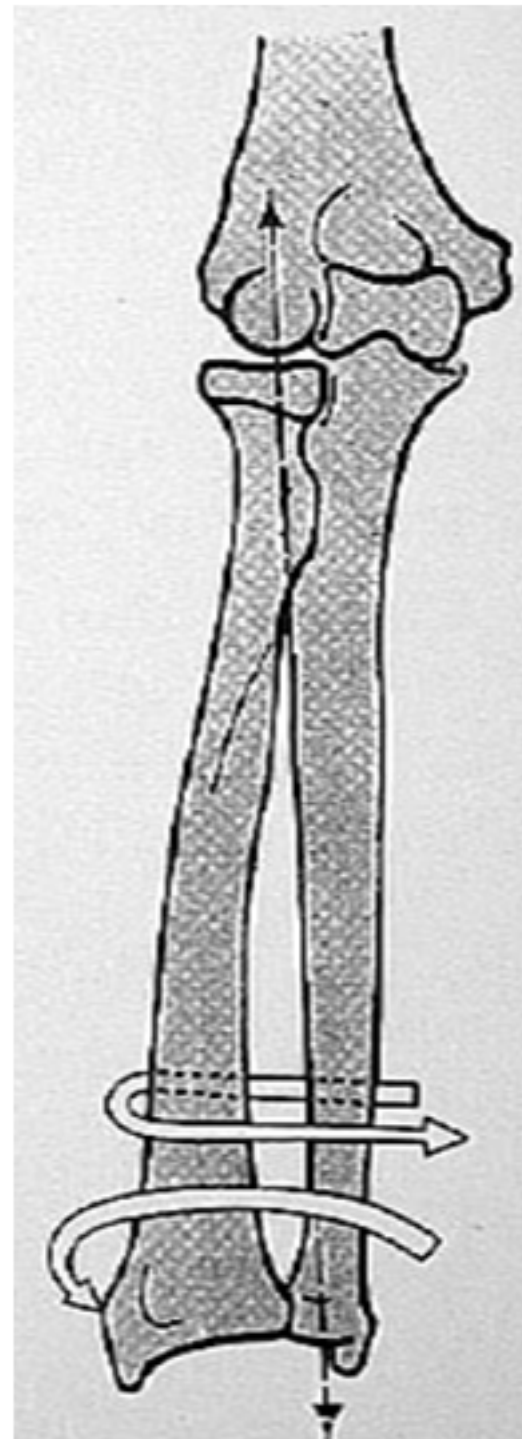


# Articulation cylindrique

39

- Surfaces articulaires **cylindriques**, creuse et pleine.
- Un seul axe de mobilité.
- **Exp** : articulation radio cubitale.



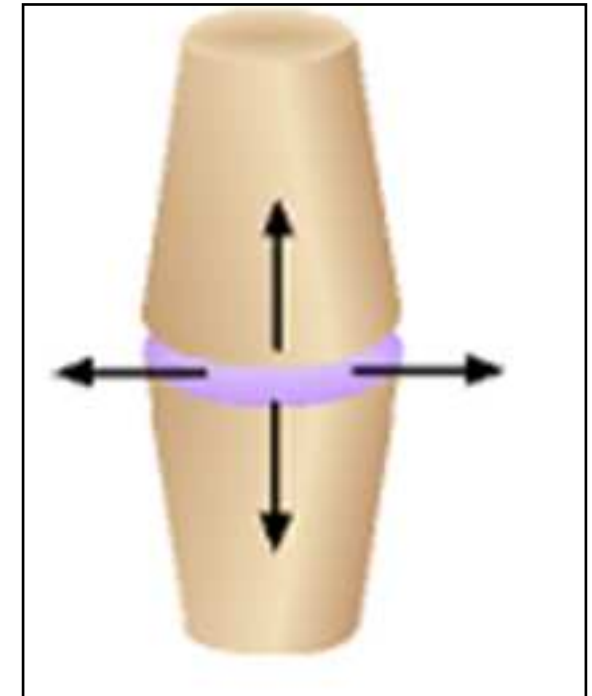
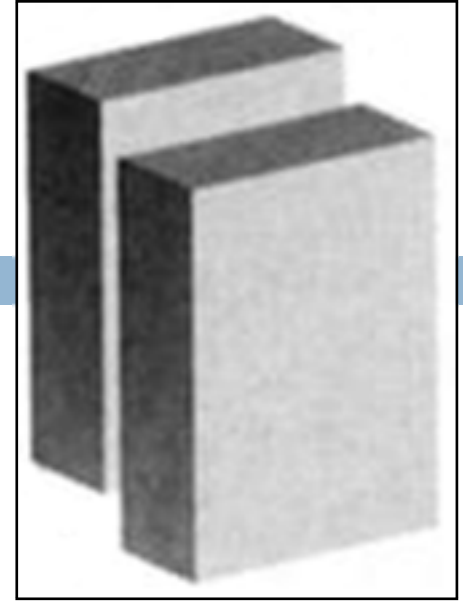


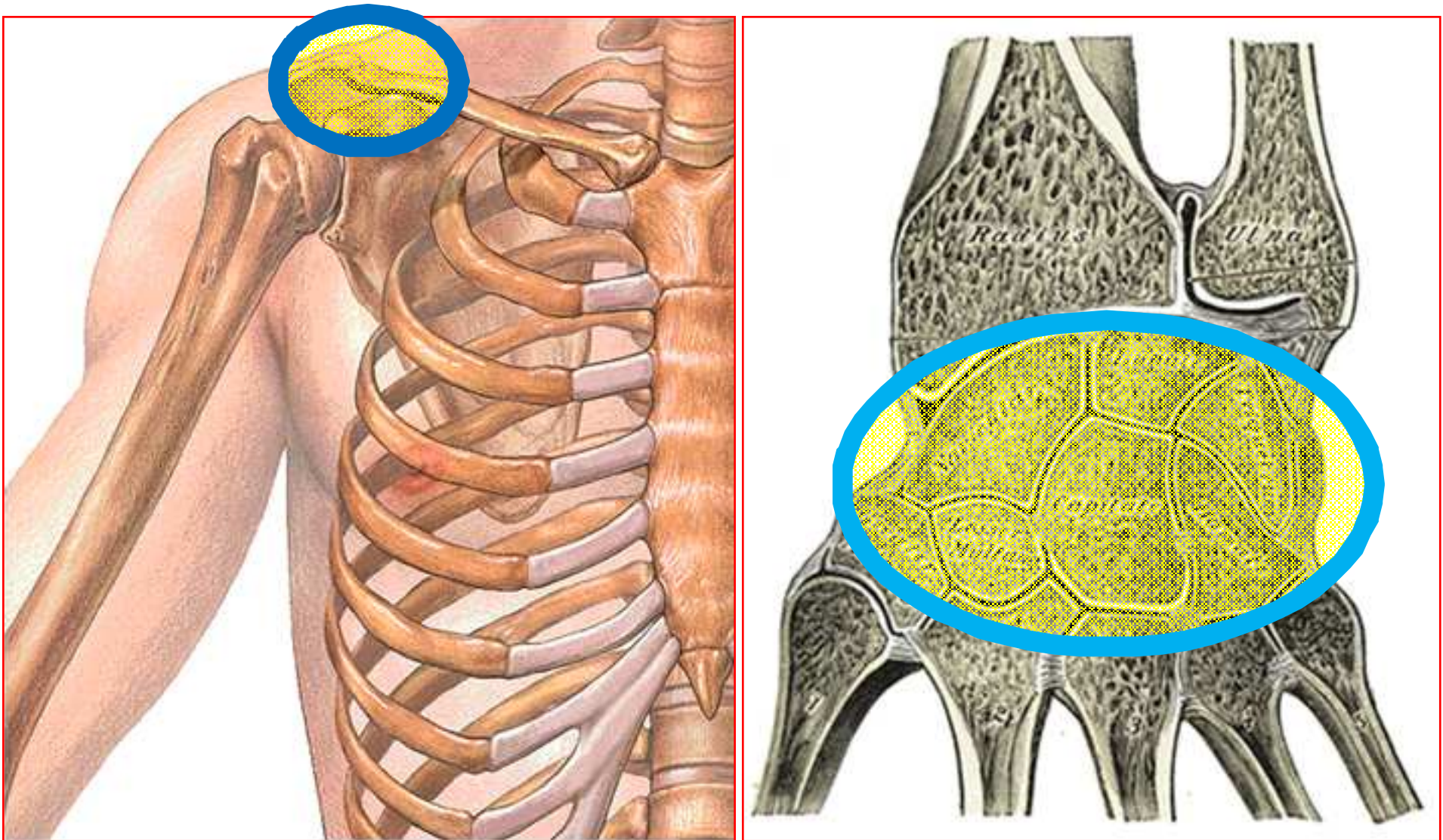


# Articulation plane

41

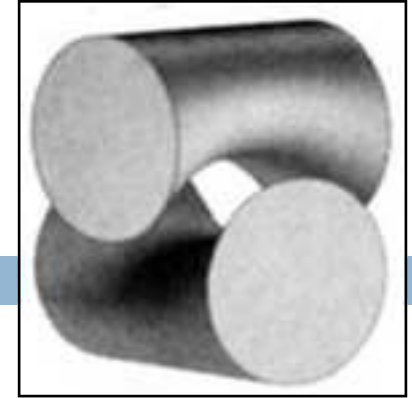
- Surfaces articulaires **planes**.
- 3 axes de mobilité.
- **Exp** : articulation acromio-claviculaire, articulations du carpe.



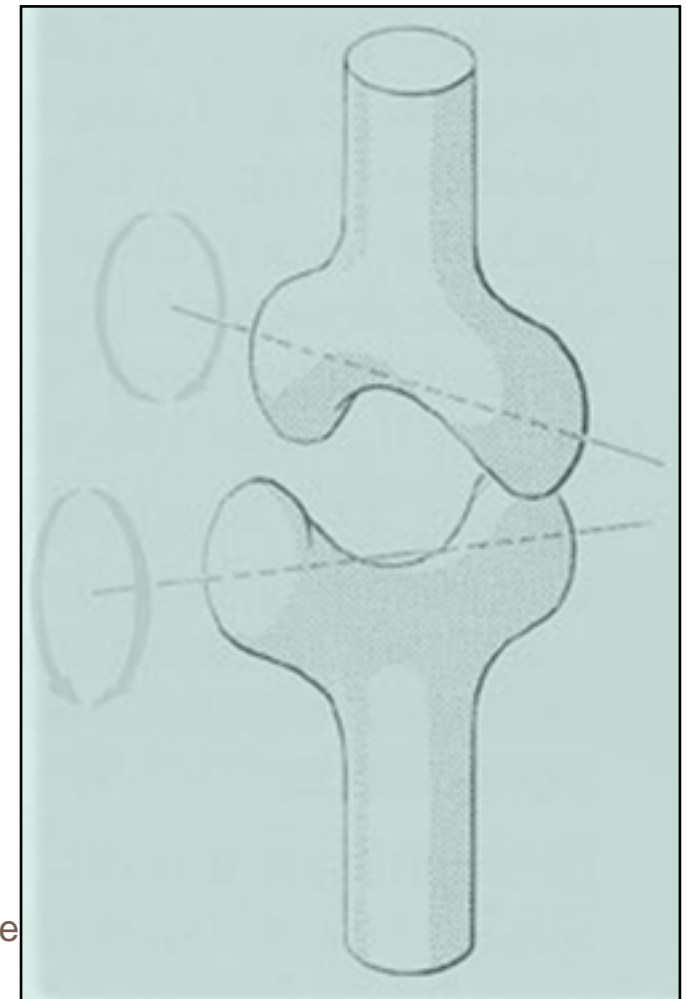


# Articulation en selle

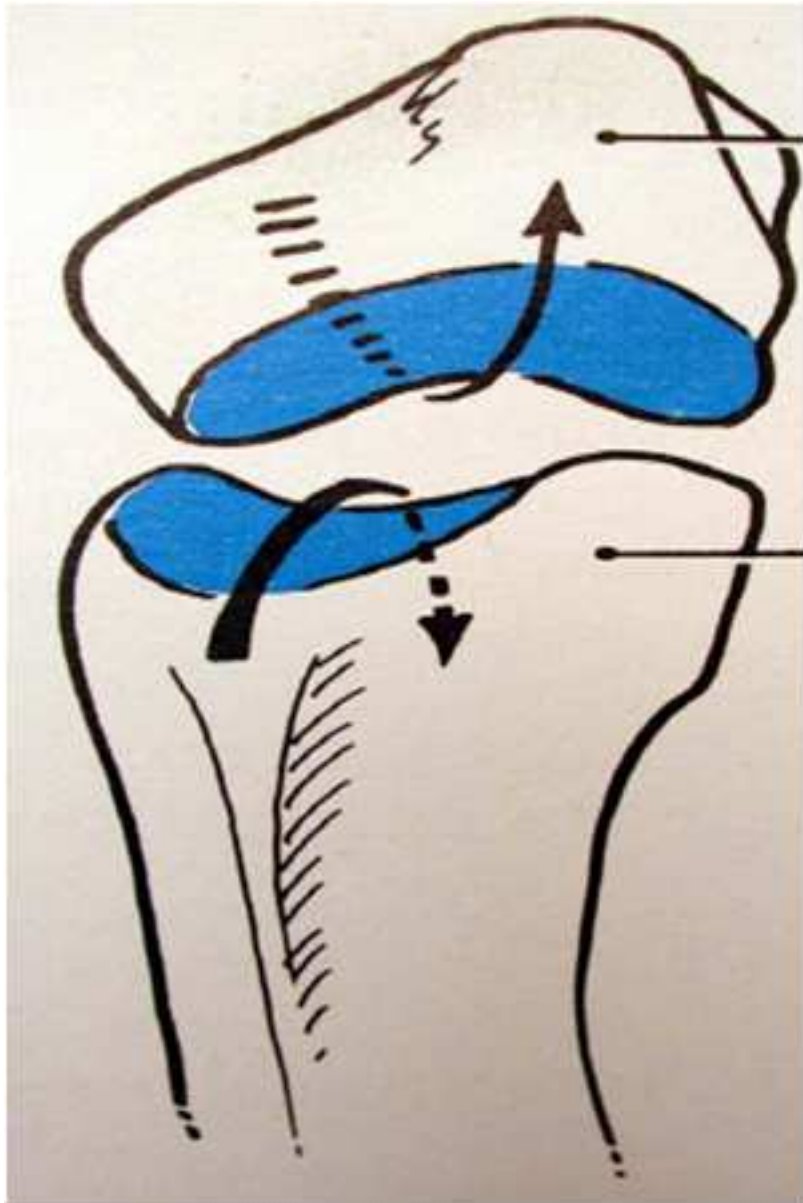
43



- Surfaces articulaires concaves disposées « **comme un chevalier sur un cheval** ».
- 2 axes de mobilité.
- **Exp** : articulation carpo-métacarpienne.

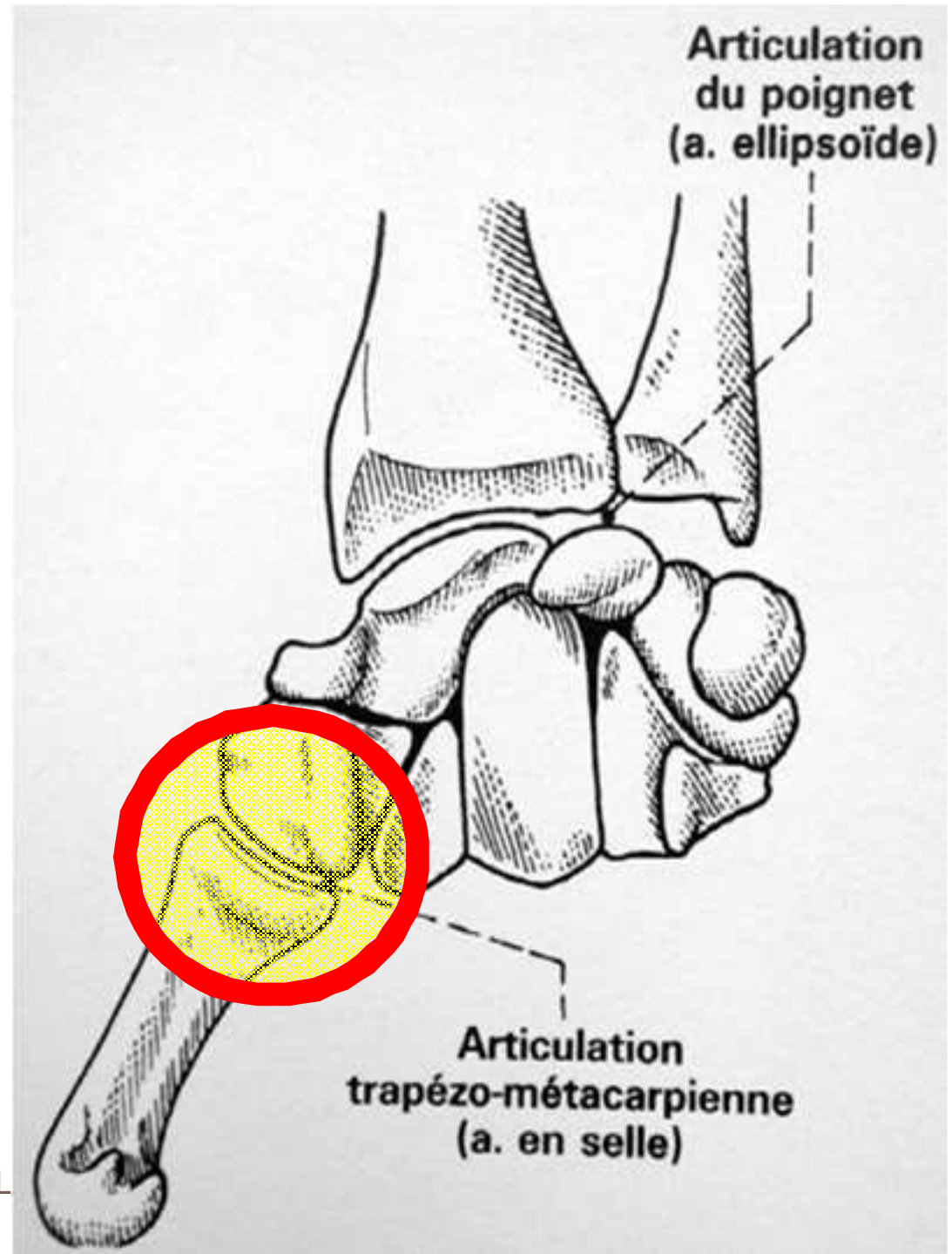






45

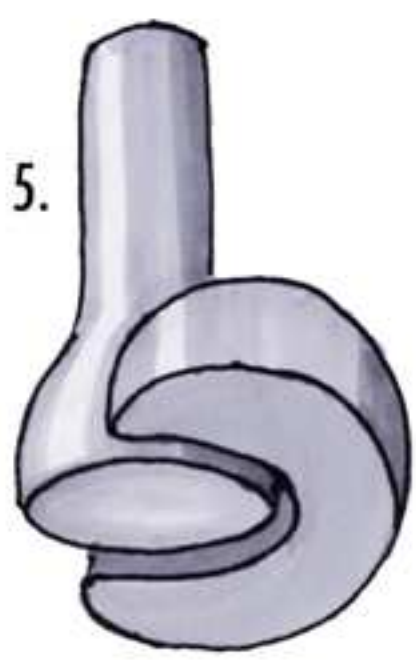
Dr. ABDALL



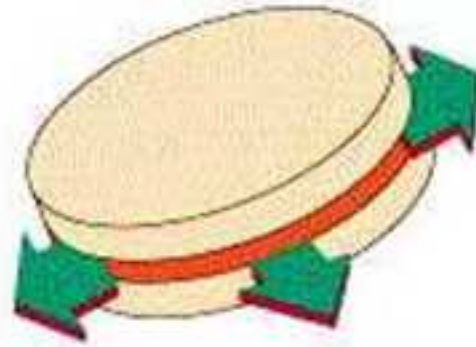
Articulation  
du poignet  
(a. ellipsoïde)

Articulation  
trapézo-métacarpienne  
(a. en selle)

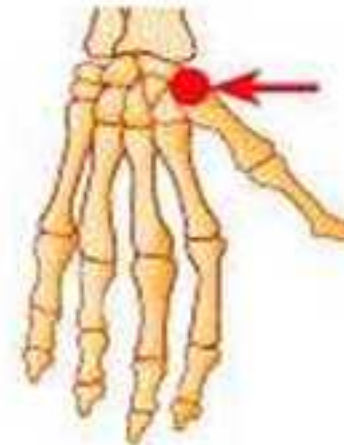




**(a) Plane**



**(b) Saddle**

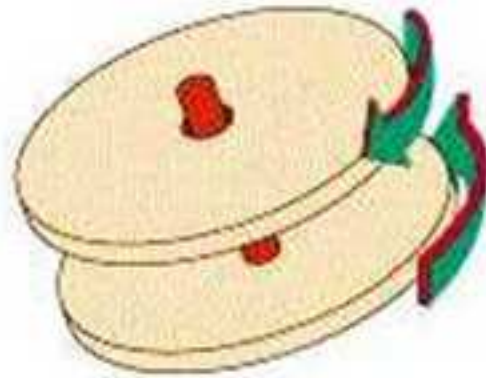


**(c) Hinge**





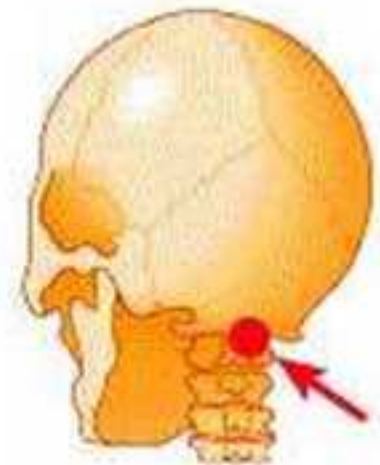
**(d) Pivot**




**(e) Ball-and-Socket**



**(f) Elipsoid**



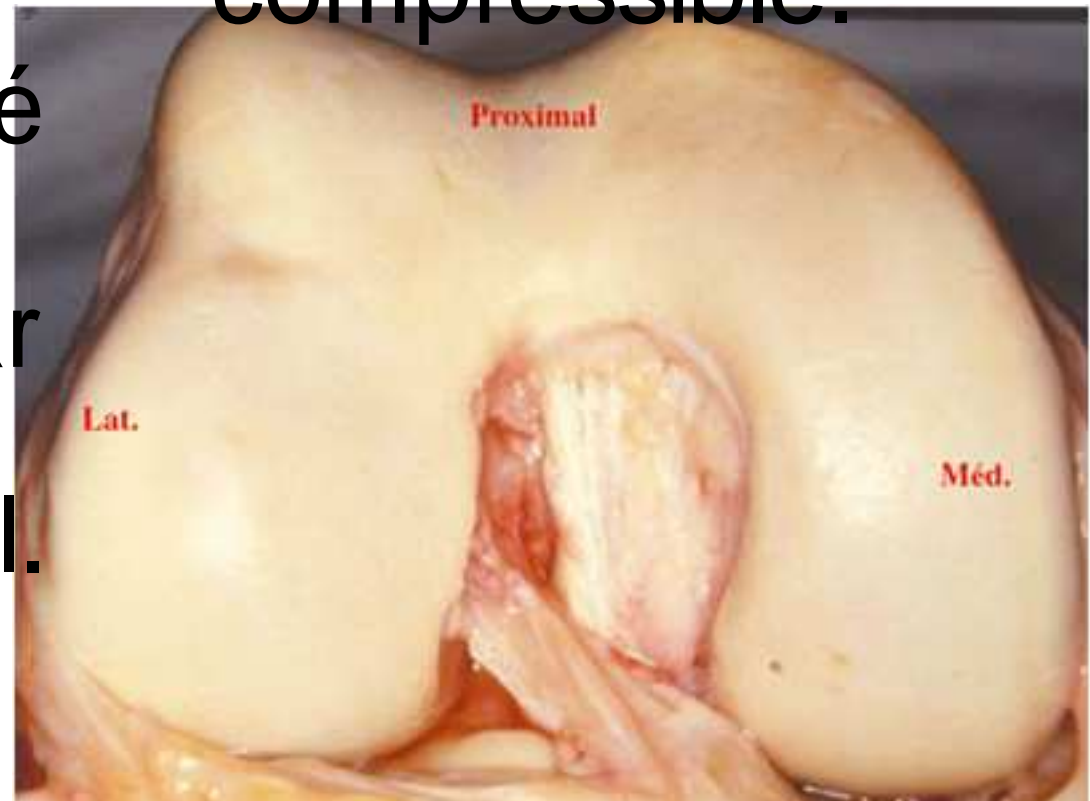


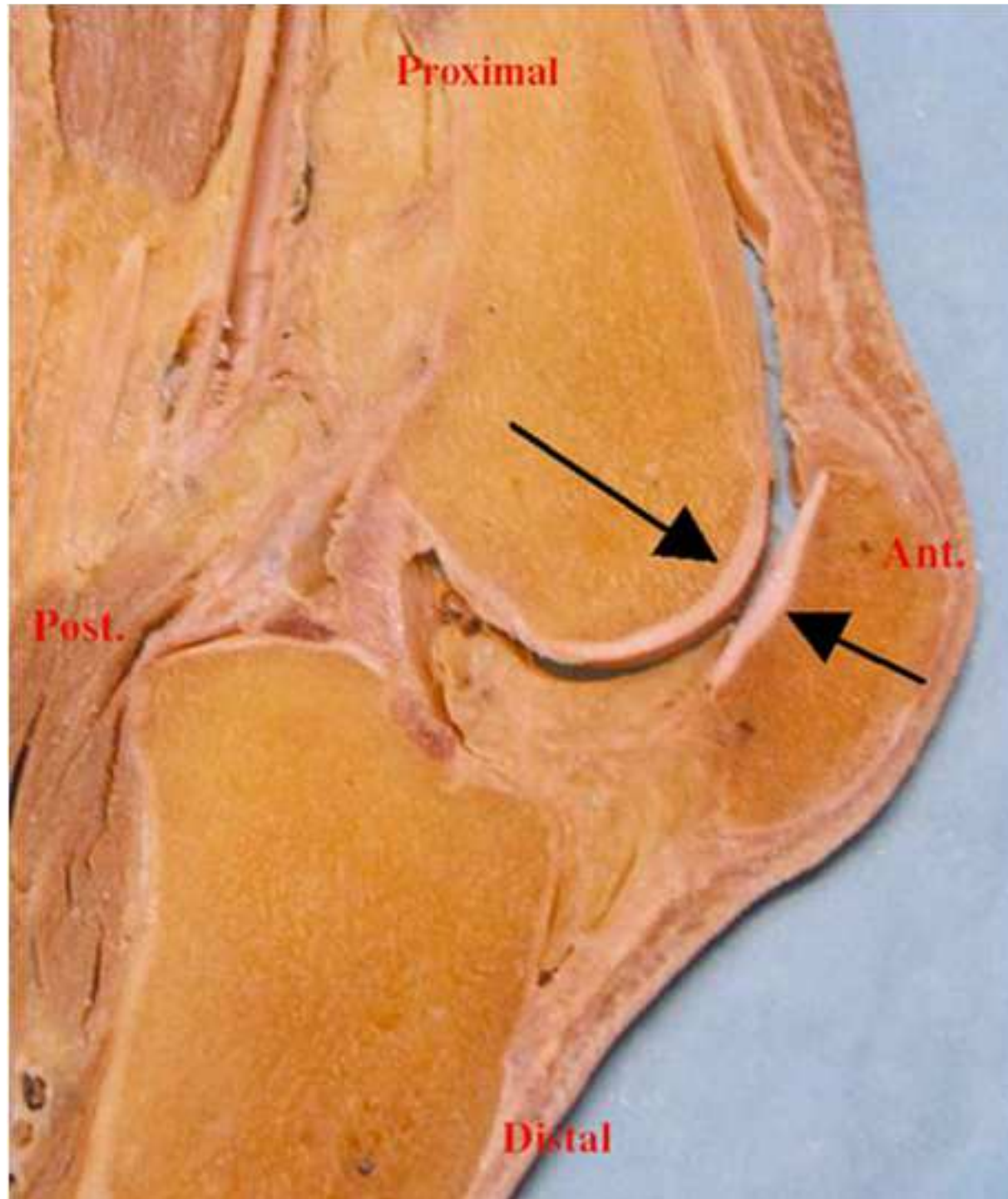
# Cartilage et tissu cartilagineux

# Cartilage

51

- Substance blanche, lisse, élastique et compressible.
- Ni vascularisé ni innervé.
- Se nourrit par imbibition du liquide synovial.

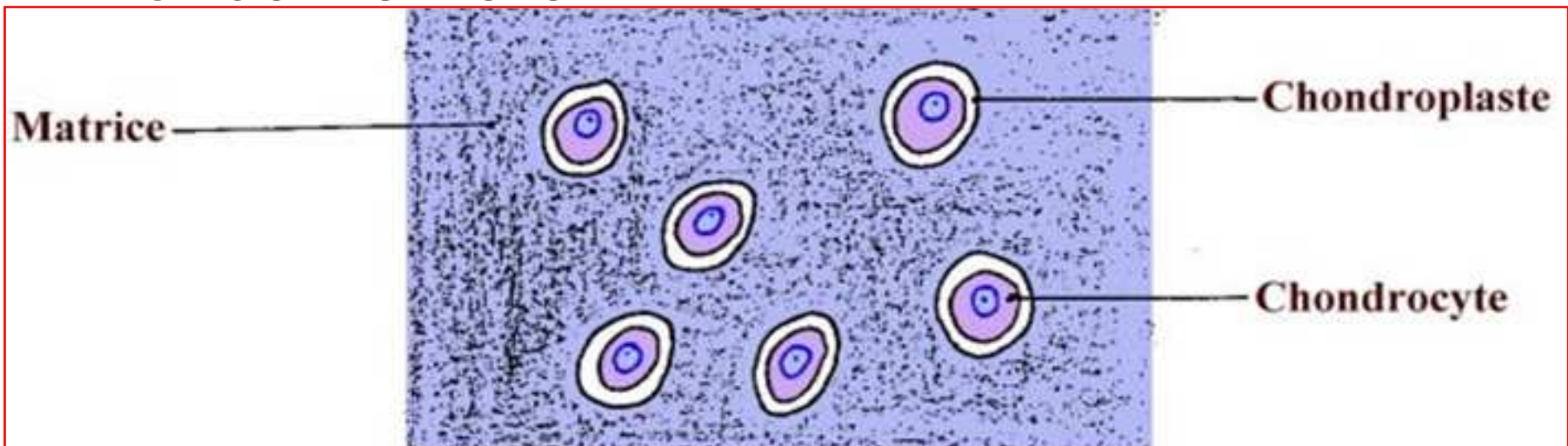
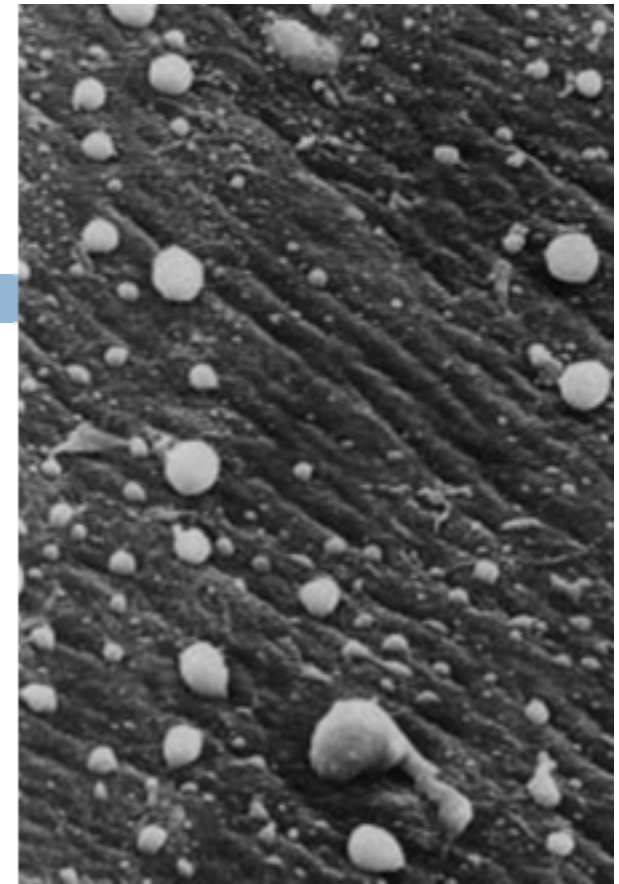




# Tissu cartilagineux

53

□ Tissu spécialisé, constitué de **chondrocytes** situées dans une **matrice** de fibres et de substance fondamentale.



# Types de cartilages

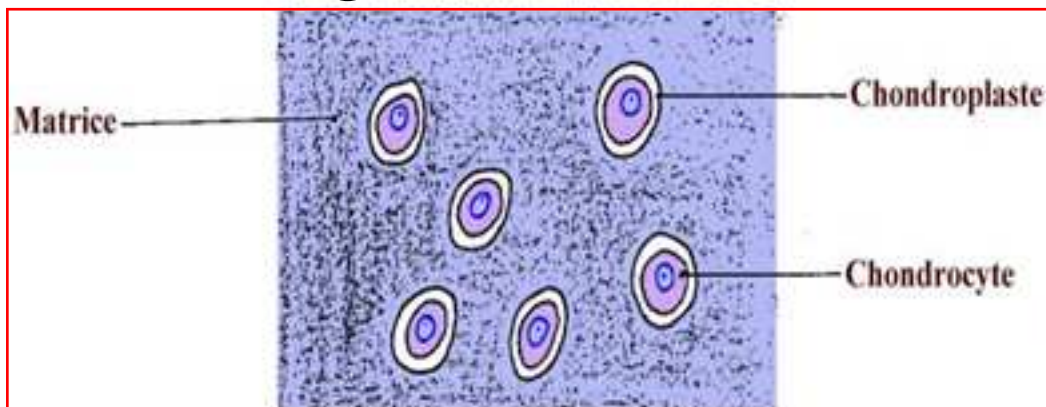
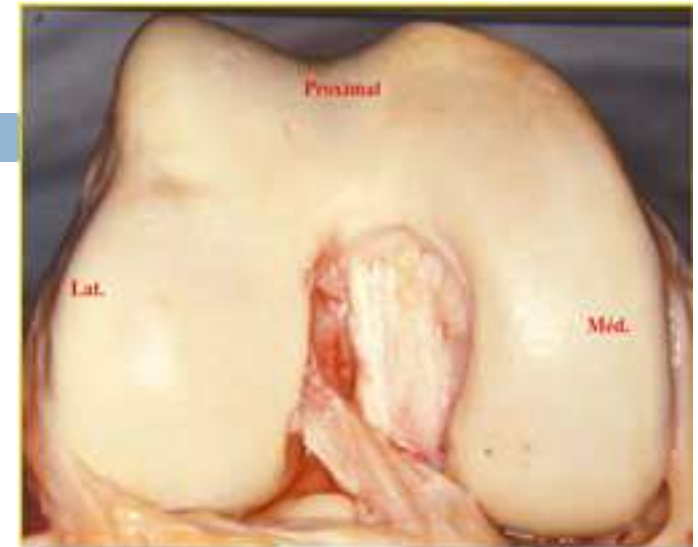
54

- Il existe 3 types :
  - / **Cartilage hyalin (cartilage articulaire).**
  - / **Cartilage fibreux (fibrocartilage).**
  - / **Cartilage élastique.**

# Cartilage hyalin

55

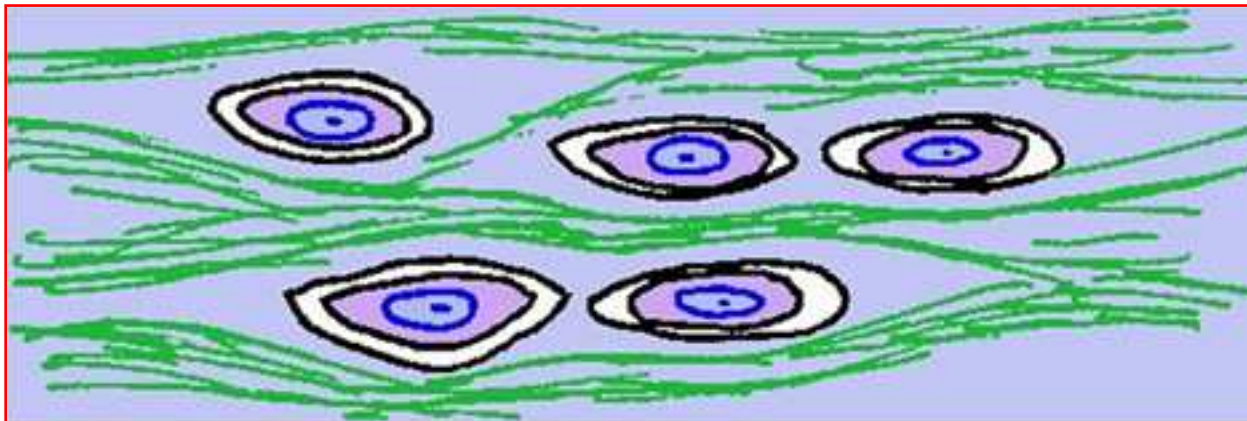
- Translucide et élastique.
- **Chondrocytes** logées dans des **chondroplastes** entourés de substance fondamentale et collagènes.



# Cartilage fibreux

56

- Blanchâtre et résistant.
- Riche en fibres collagènes.

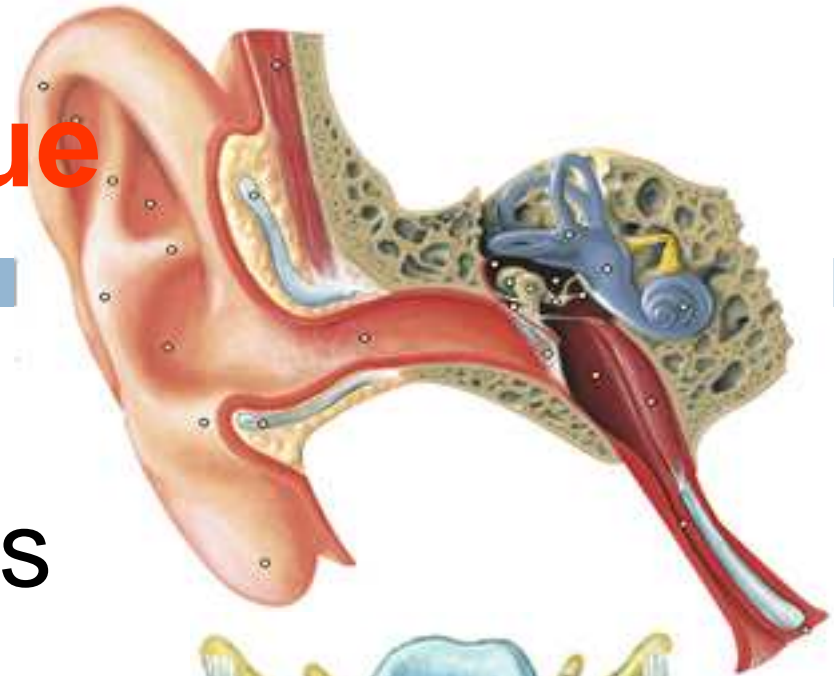




# Cartilage élastique

57

- Jaunâtre.
- Très riche en fibres élastiques.



# Rôles du cartilage

58

- Forme la charpente des organes.
- Donne insertions aux muscles.
- Protège les extrémités osseuses (de l'usure).



# Structures d'adaptatio n



# Définition

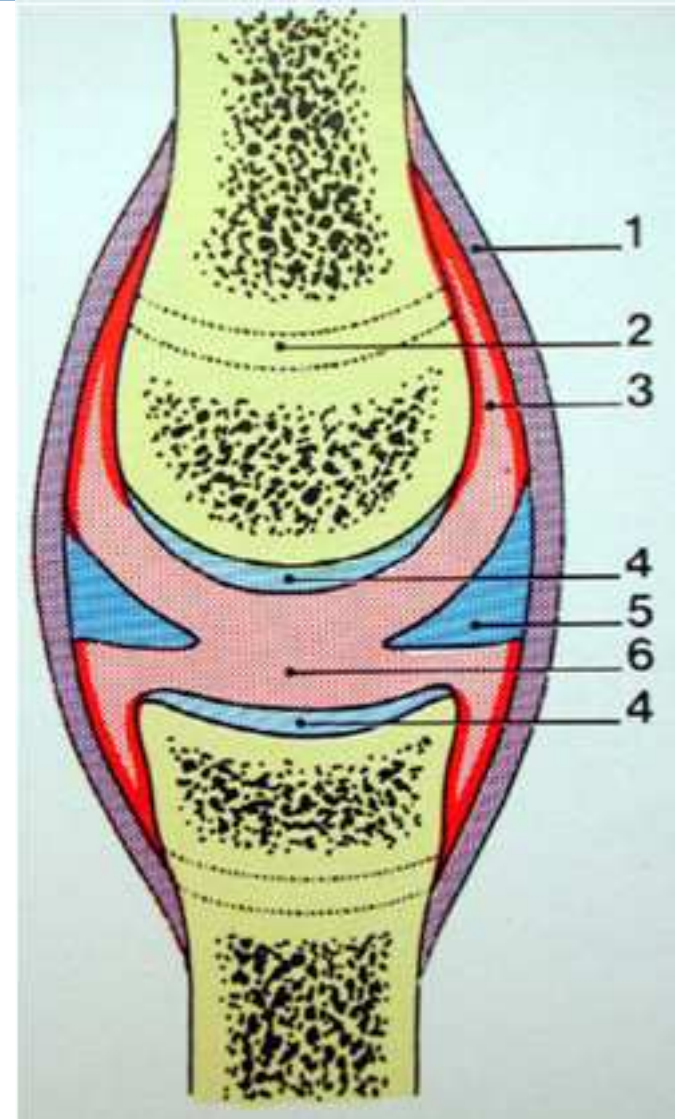
60

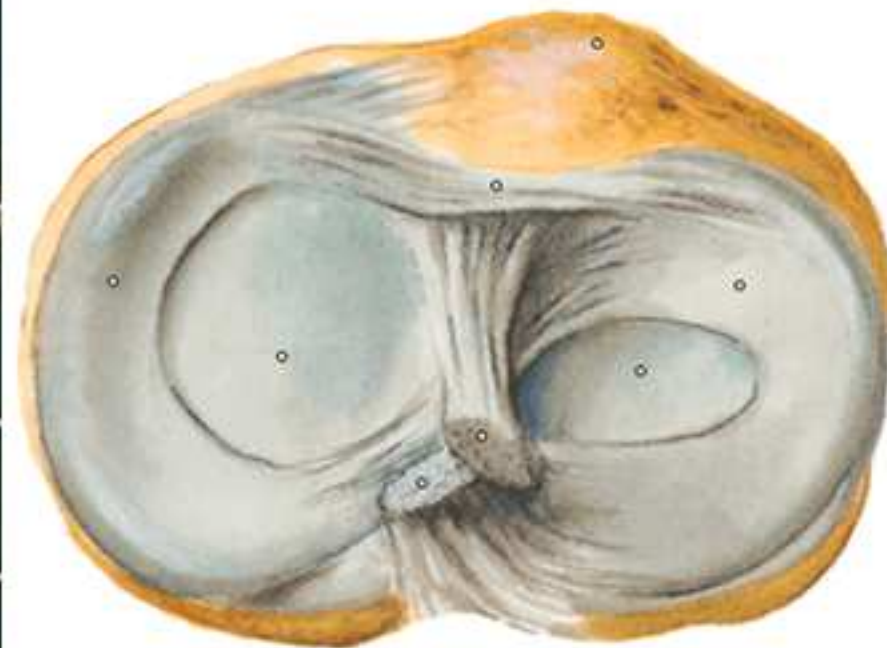
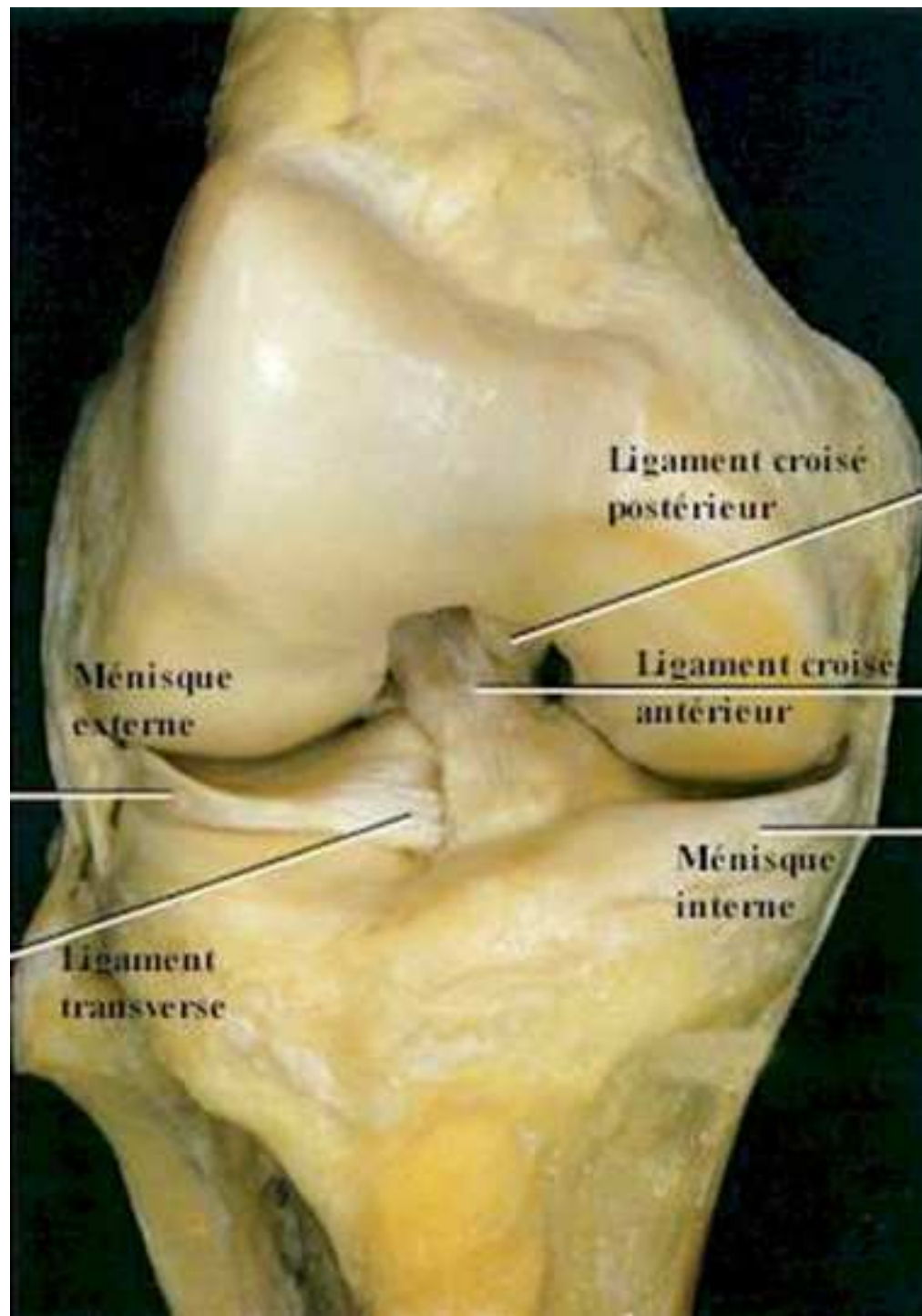
- Ce sont des fibrocartilages qui assurent une parfaite adaptation des surfaces articulaires.
- Elles peuvent être :
  - / **Ménisque.**
  - / **Bourrelet (labrum).**
  - / **Disque.**

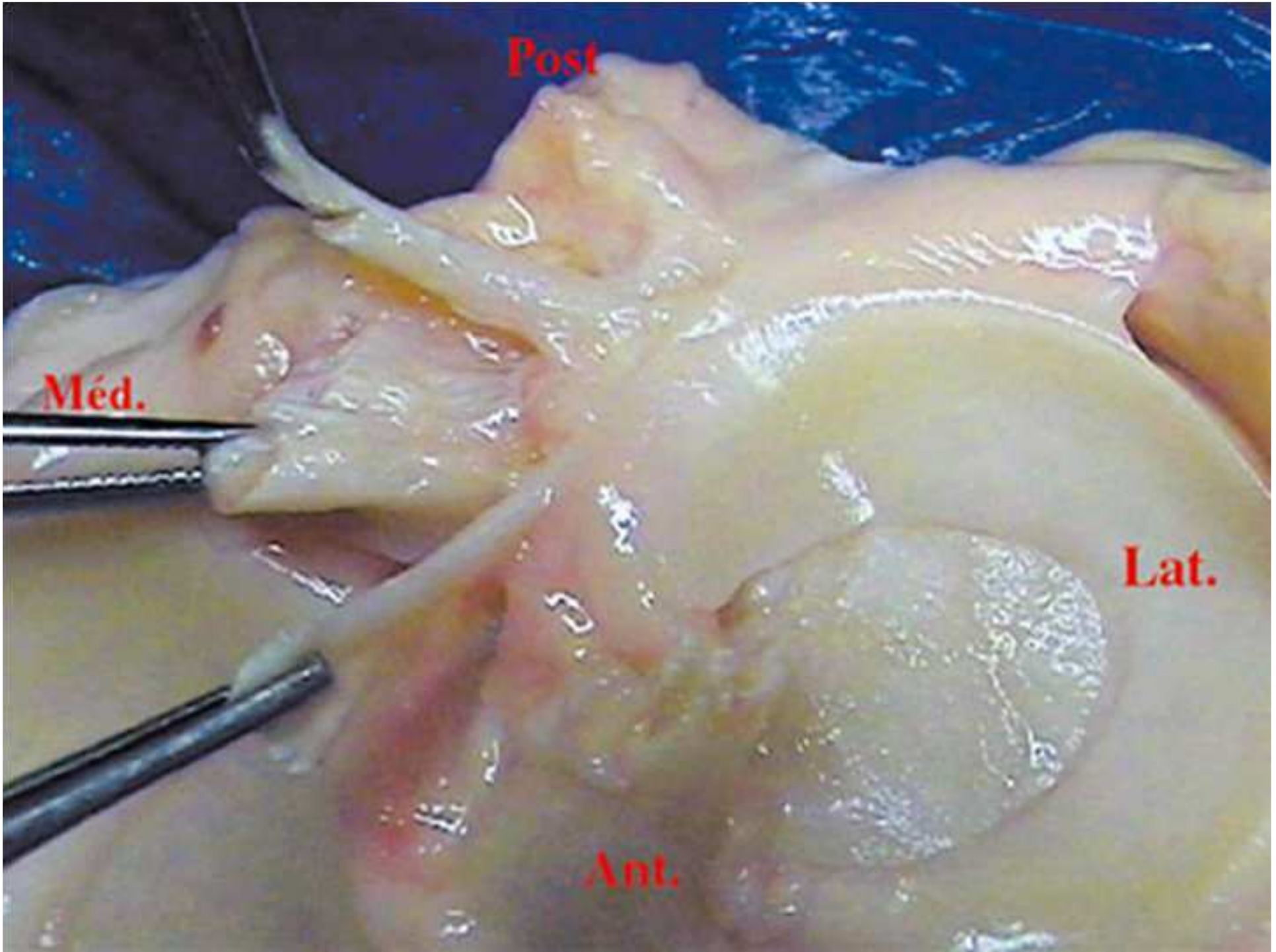
# Ménisque

61

- **Lame fibro-cartilagineuse** intra-articulaire interposée entre les surfaces articulaires.
- **Exp:** ménisques du genou.



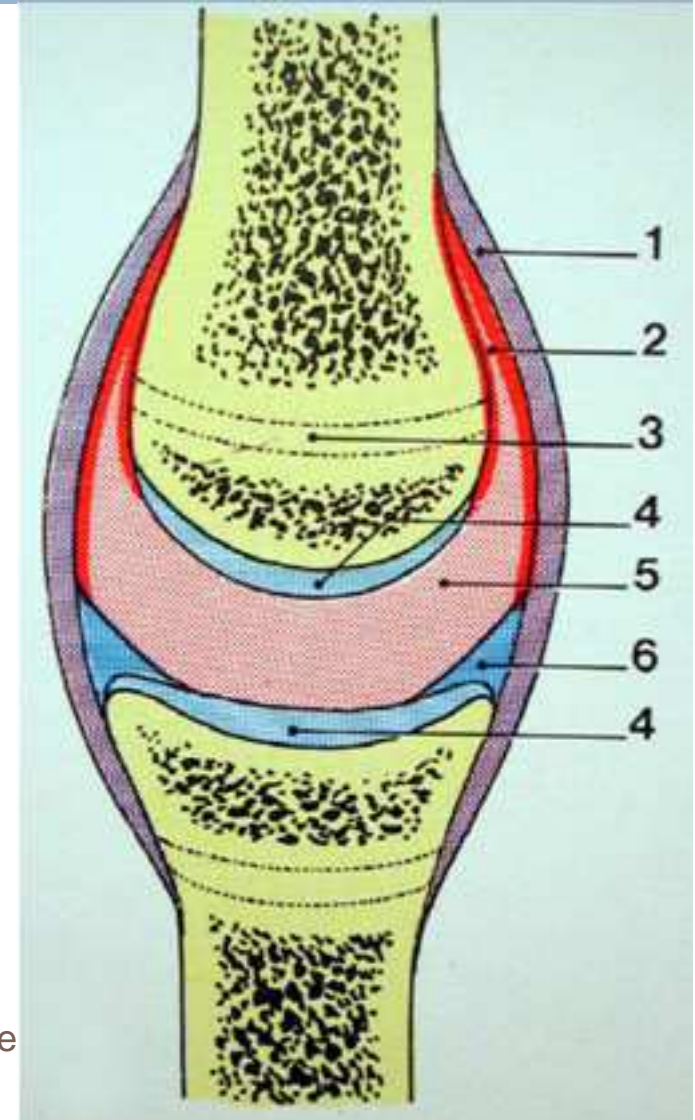




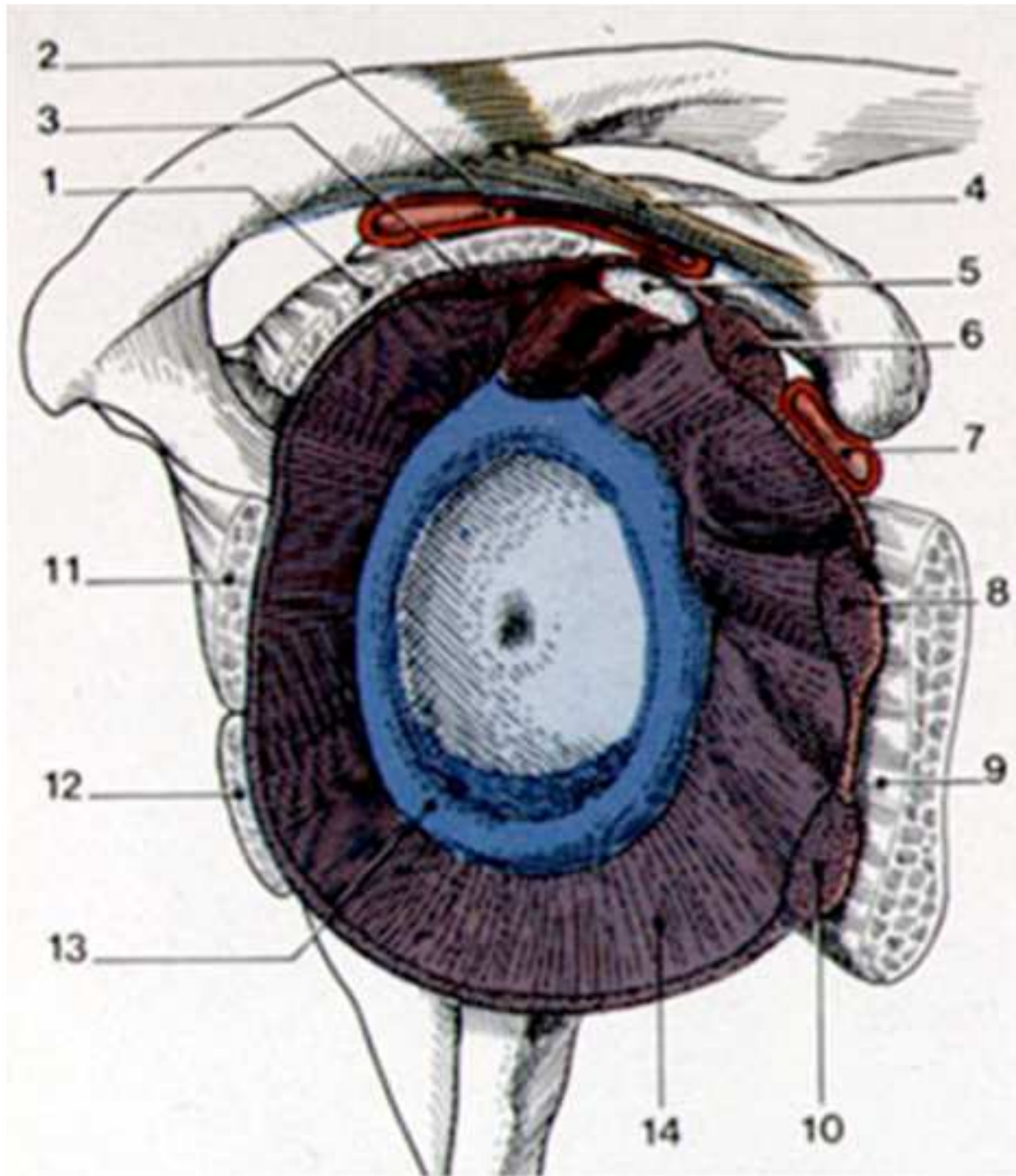
# Bourrelet

64

- **Anneau fibro-cartilagineux** intra-articulaire interposé entre les surfaces articulaires.
- **Exp:** bourrelet de la scapulo-humérale.



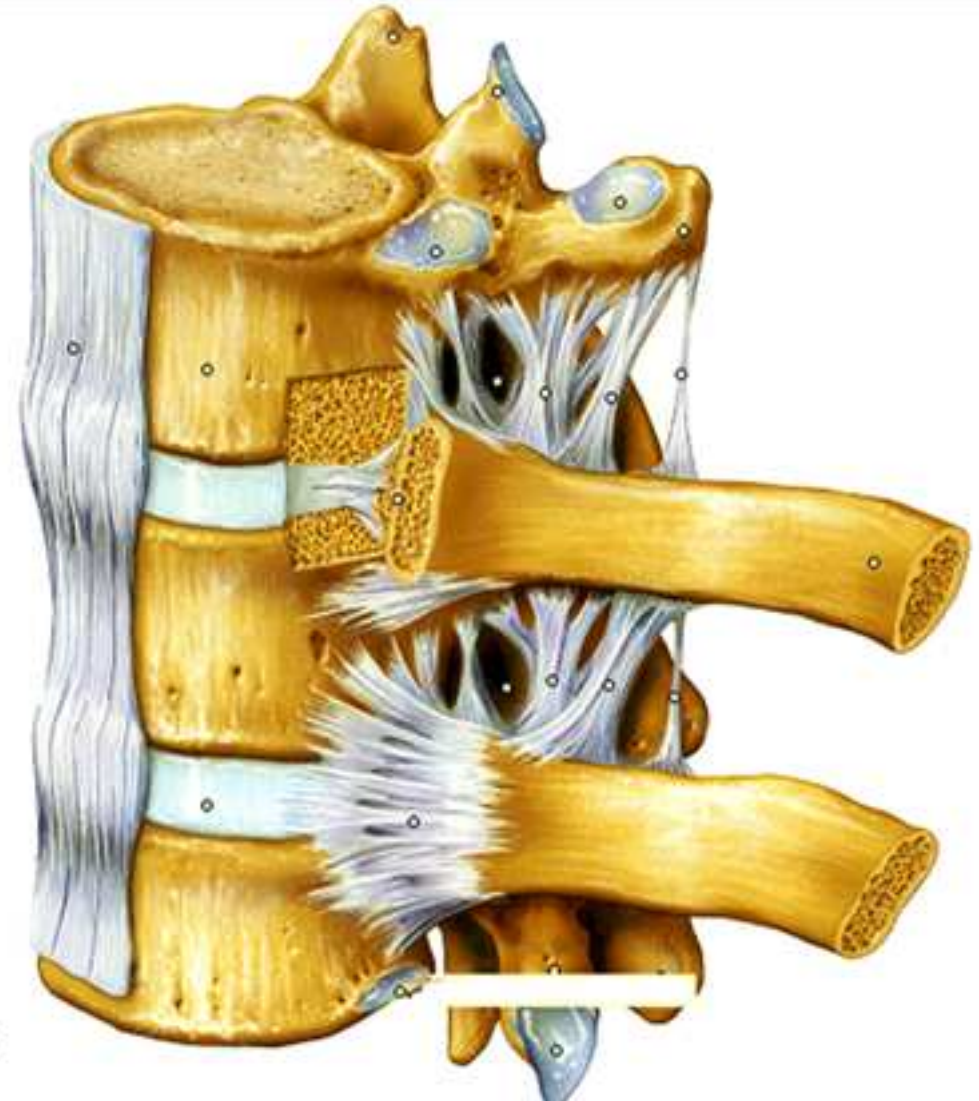




# Disque

66

- Cloison intra-articulaire.
- **Exp:** disque intervertébral.



Mécaniq

ue

articulair

e



# Mouvement articulaire

68

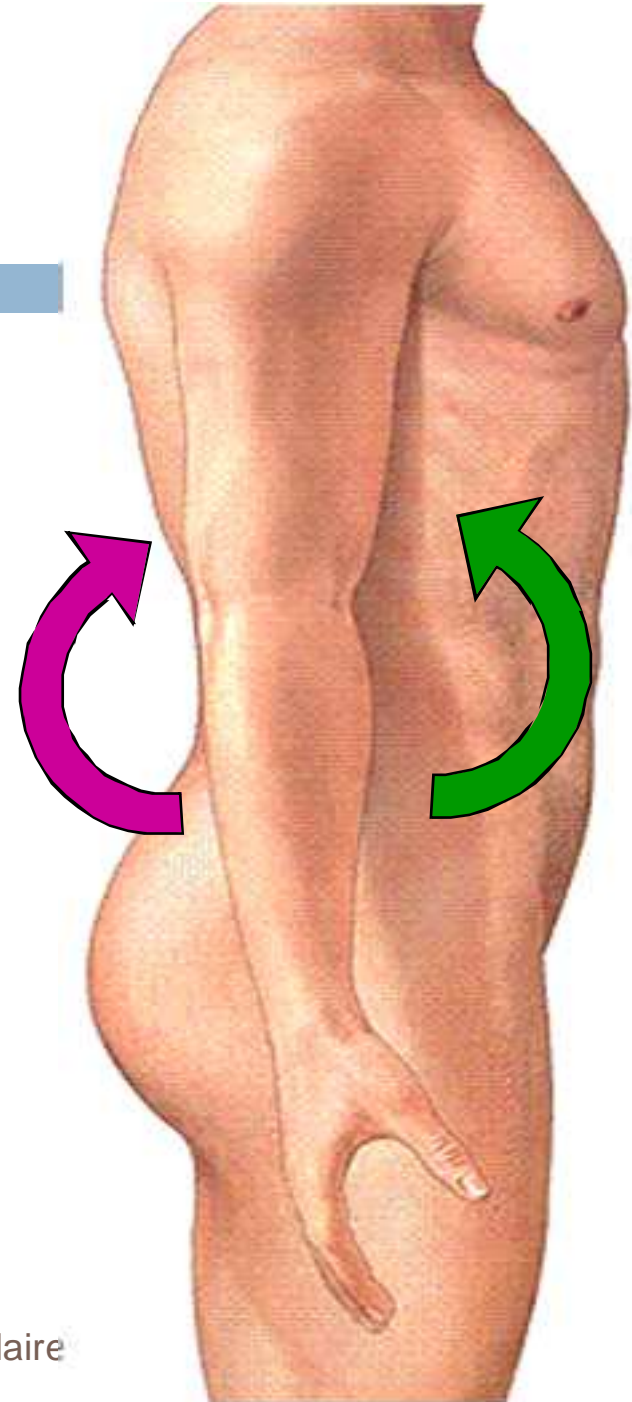
- Le rôle principal d'une articulation est **le mouvement**.
- Les mouvements se font autour d'un **axe**.
- Pour chaque mouvement on précise **le degré de mobilité (0° à 180°)**.

# Types de mouvements

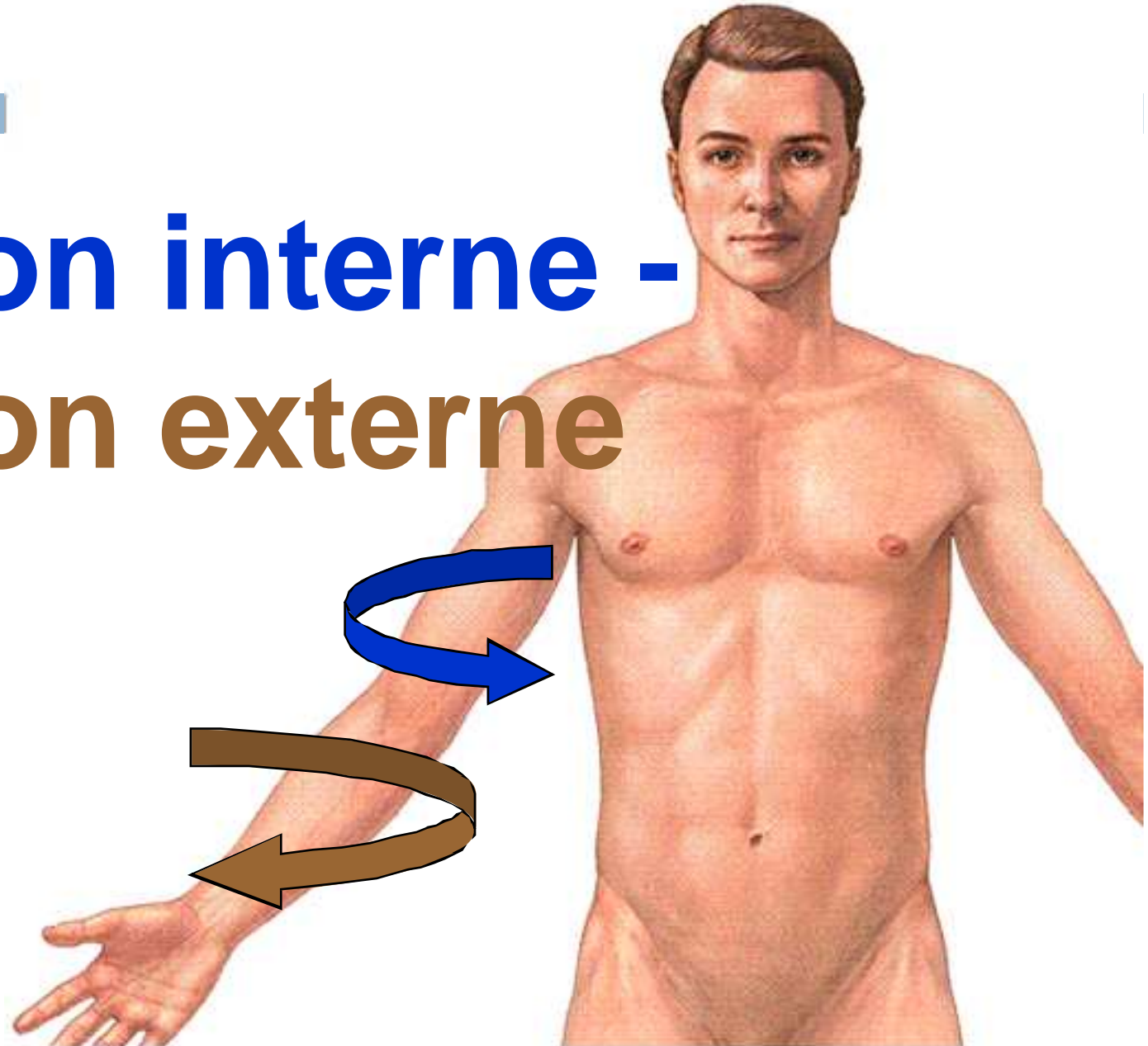
69

- **Flexion, Extension.**
- **Abduction, Adduction.**
- **Rotation interne, Rotation externe.**
- **Pronation, Supination.**

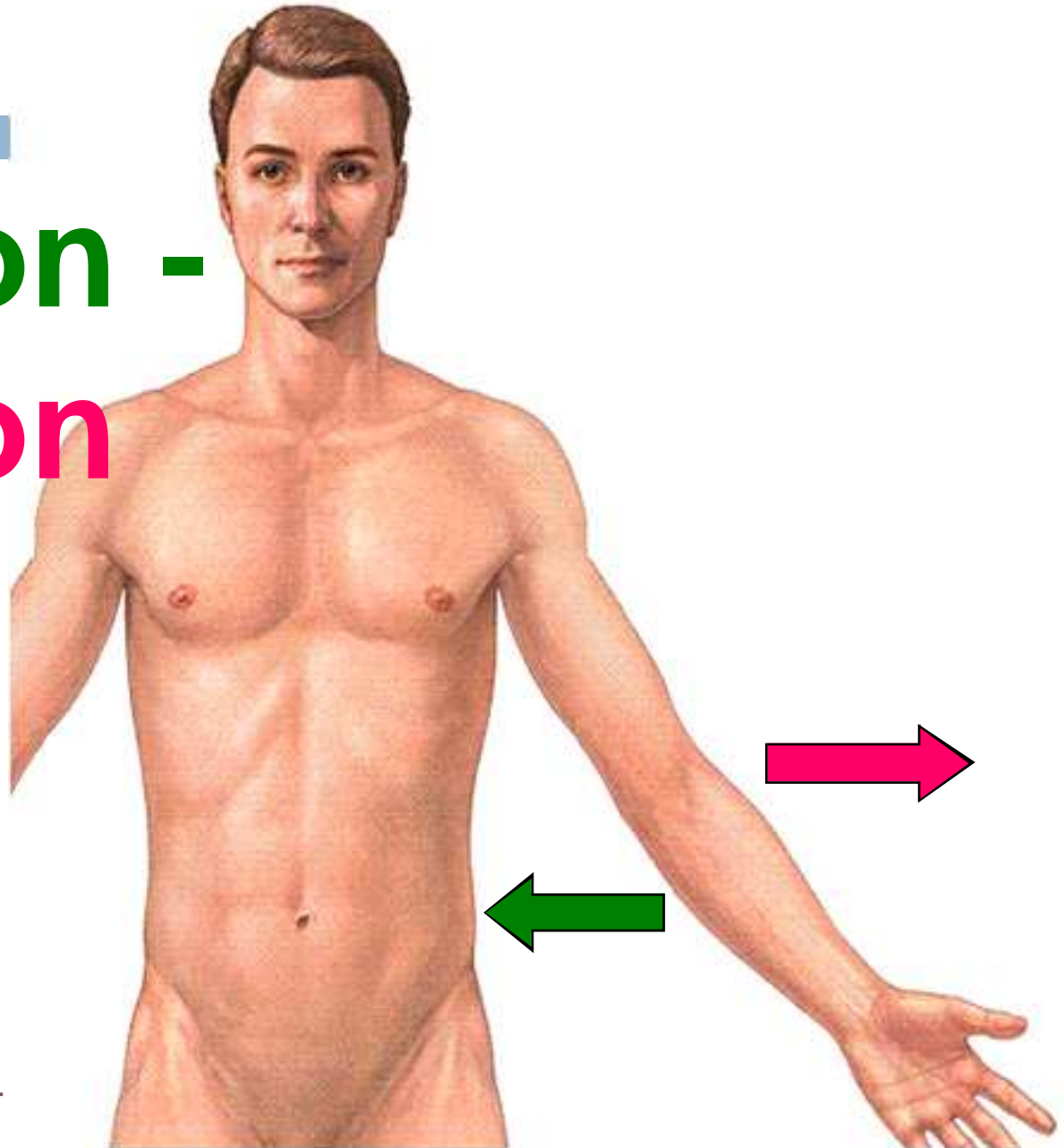
# Flexion - Extension



# Rotation interne - Rotation externe



# Adduction - Abduction

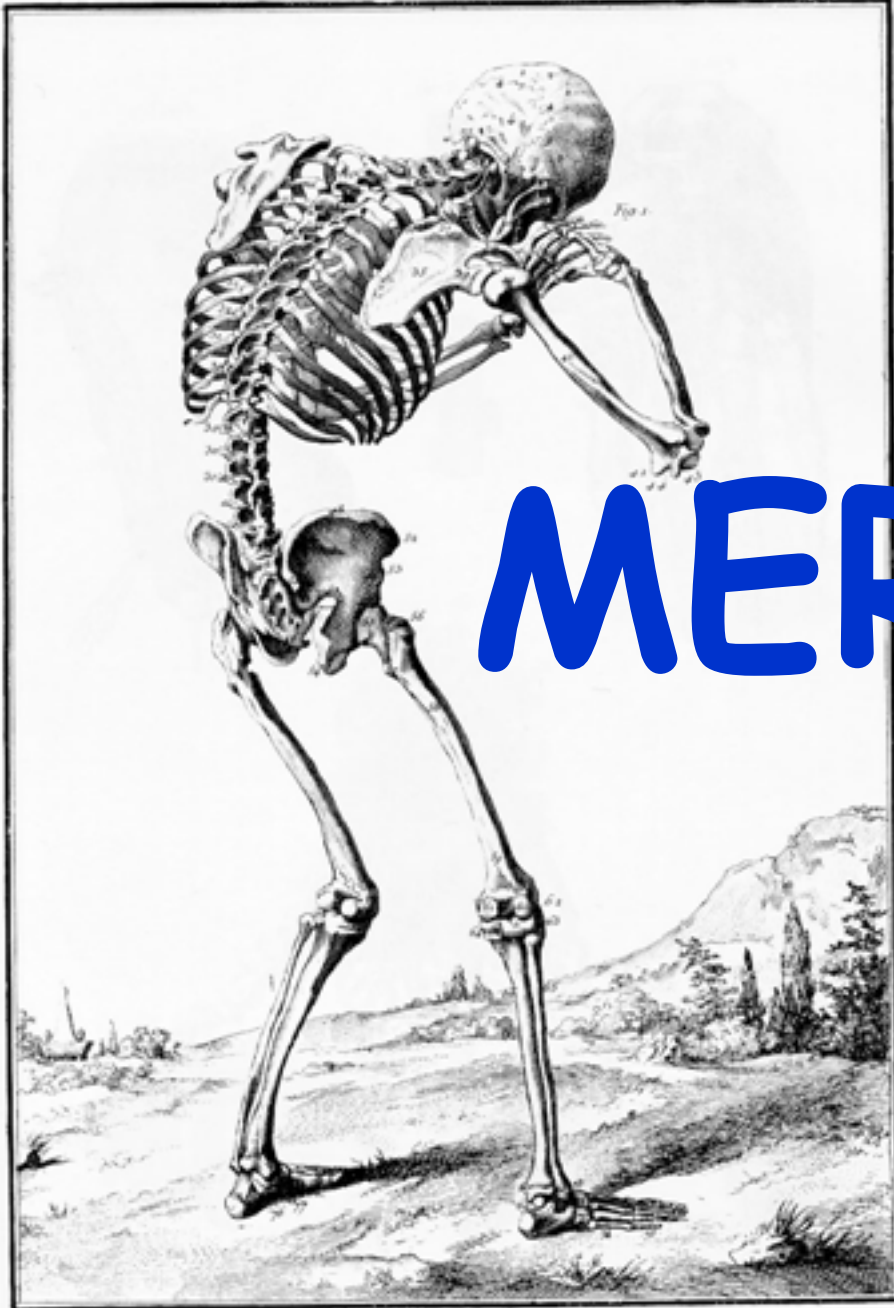


Dr.

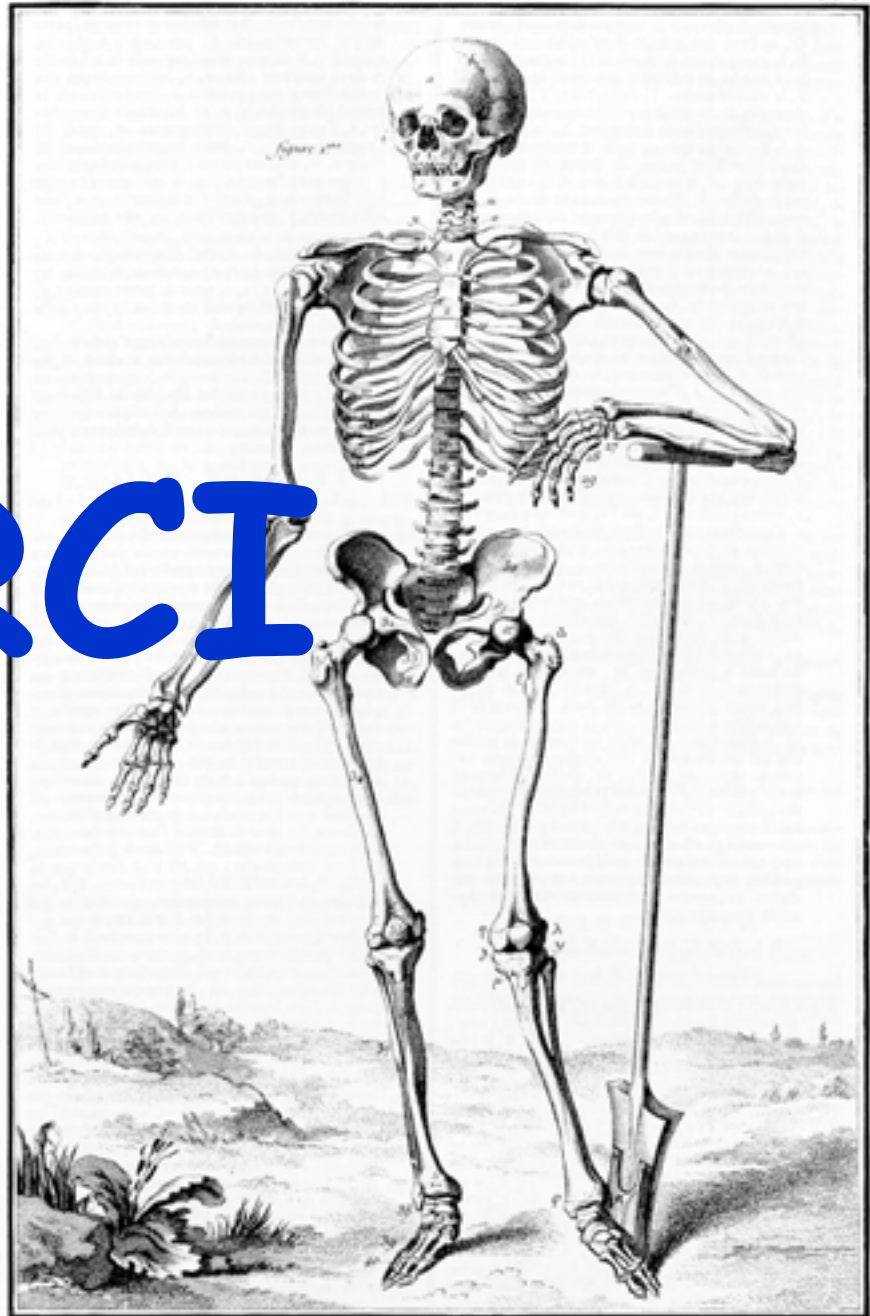


# Pronation Supination





*Anatomic.*



*Anatomic.*

MERCI